

# Penta XL & Penta Plus XL

## Household Burglary Alarm Panel

### 12V/3.2Ah BATTERY:

Replace the battery every 3 - 5 years. The maximum charging current is 350mA.

Connector for 3601 Voice Module

Electronics Line 3000 recommends testing the system at least once a week. Refer to the testing procedure found in the user manual.

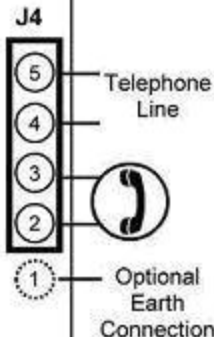
JPD Jumper for factory default restore

**AUXILIARY POWER OUTPUT:**  
AC Operated: 13.5 - 14.0V  
Battery Operated: 12V Nominal

**BATTERY PROTECTION FUSE:**  
Replace with a 1.0A/250V fuse

**BELL/SIREN OUTPUT:**  
600mA max.

**AUX OUTPUT CURRENT DRAW:**  
The auxiliary output current allowed for peripheral units must not exceed 300mA when one keypad is installed. For each additional keypad (up to 3 max.) the permitted current draw is reduced by 50mA.



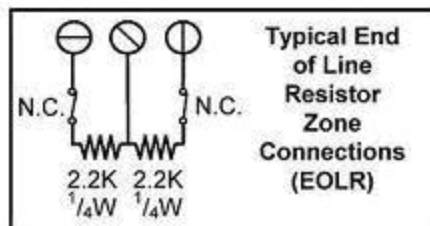
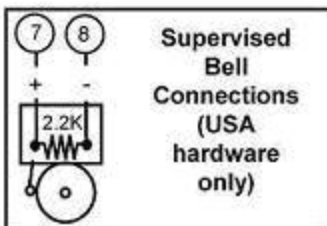
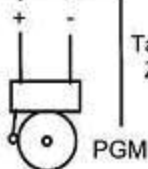
RED  
BLACK

**J1**



AC Transformer  
50/60Hz  
15VAC  
22-30VA  
Do not connect to a switch controlled receptacle.

AUX + -  
KPD K2 K1



# Penta XL Penta Plus XL

New processor for enhanced performances

Penta XL and Penta Plus XL control panels. Based on their predecessors Penta and Penta Plus, the Penta XL series are implementing the Microchip PIC18F252, a powerful 10 MIPS (100 nanosecond instruction execution) 8-bit microcontroller.

- [Superior report capabilities](#)
- [New report algorithm](#)
- [Alarm memory](#)
- [Arm/disarm tones](#)

## Superior report capabilities

The Penta XL series of control panels allow for up to **three telephone numbers** (Primary, Duplicate and Backup) to be programmed with their own communication protocol.

These telephone numbers are dedicated for use in central station communications or with the end-user 'Follow-me' feature. Each telephone number can be programmed with up to 16 digits and supports \* and #DTMF tones for prepaid call.

Telephone type	Address	Description
Primary	77	The primary telephone number is the first number that is dialed when an event occurs.
Duplicate	78	The duplicate telephone number enables the control panel to report events to more than one central station/end user.
Backup	79	If the panel fails to communicate with either the Primary or Duplicate numbers within a communication round, the Backup telephone number is dialed.

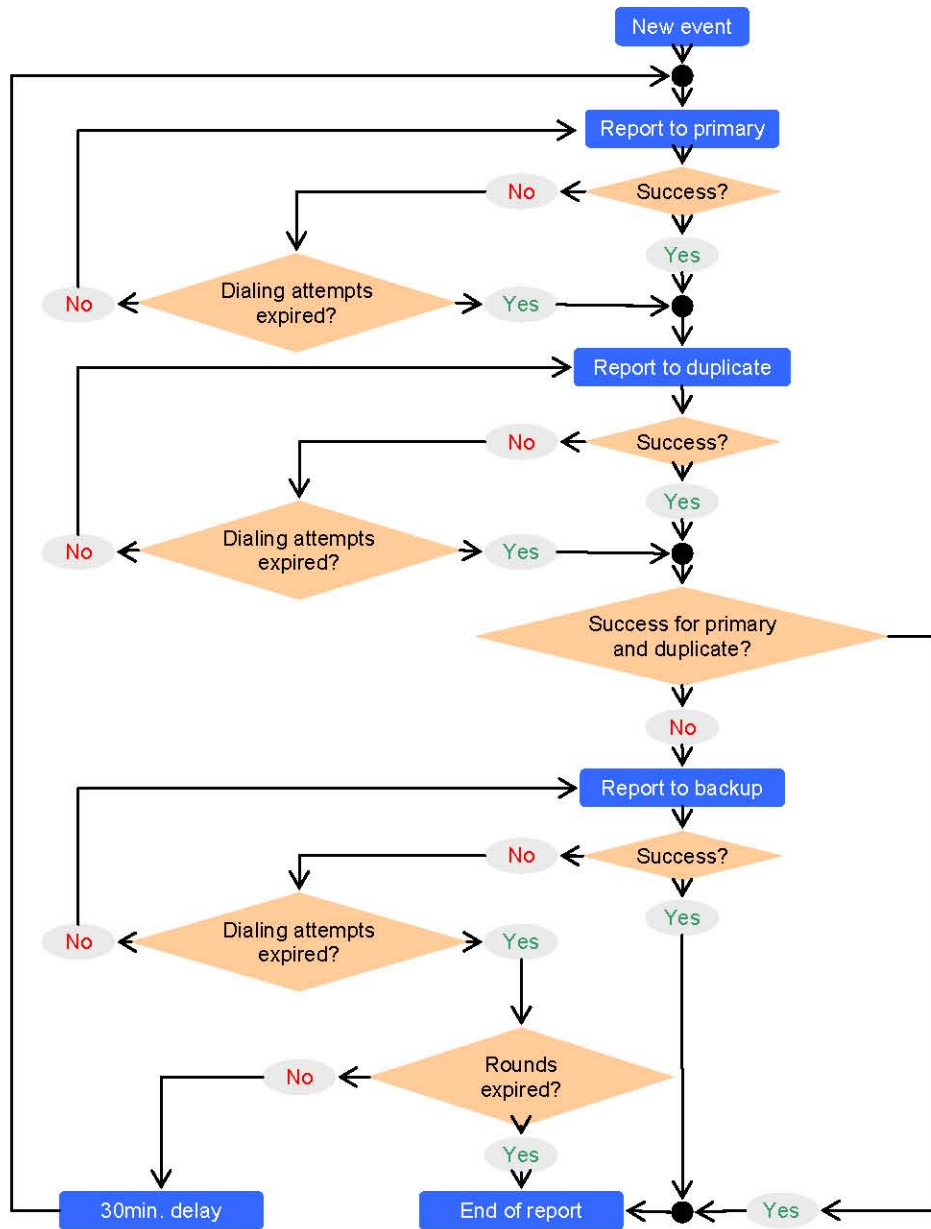
## New report algorithm

The control panel's attempts to communicate with the central station are organized in rounds. A communication round is a set of dialing attempts.

If the panel does not succeed in sending the event message to the **primary** or the **duplicate** number within this number of attempts, the **backup** number is dialed the same number of times. A new round will begin 30 minutes after the last dialing attempt. The number of communication rounds is defined in the first digit of address 00. The number of dialing attempts in each round is defined in the second digit.

For each primary, duplicate and backup reports, it is possible to program the following communication protocols:

- **Contact ID**
- **10bps 4/2 no Parity**
- **CESA 200 bauds**
- **Follow Me**
- **Voice Follow Me**



Report algorithm

## Alarm memory

If an alarm occurs when the system is armed, the corresponding LED flashes until the system is disarmed.

This new feature allows the end-user to determine immediately which zones have been triggered while the system was armed without having to check the event log.

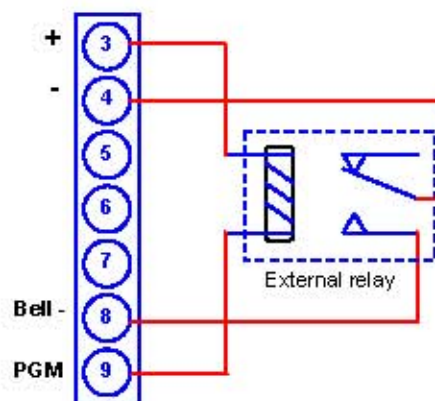


Alarms on Zone 2 and Zone 8 occurred while the system was armed

## Arm/disarm tones

Using the PGM output it now is possible for the siren to produce arm/disarm tones. The PGM options table has been updated to the following:

Address 14 value	Function	Activated by	Deactivated by
00	PGM Disabled	-----	
01	Arm/Disarm	System Armed	System Disarmed
02	Entry/Exit	Entry/Exit Tone Follower	Entry/Exit Tone Follower
04	Communication	System in Communication	End of Communication
08	AC Loss	AC Loss	AC Restore
10	Bell Follower	Bell Follower	Bell Follower
20	Duress	Duress Code	(deactivated after 2 seconds)
40	Alarm	System in alarm	Arm/Disarm/ Bell Cancel/Viewlog
80	Arm/Disarm Tones	Momentary Activation (see wiring diagram below) (Arm – 1 Tone; Disarm – 2 Tones)	



Wiring diagram for bell arm/disarm tone

## Specifications

Penta XL: 4xEOLR zones  
Penta Plus XL: 8xEOLR zones

Power input: 15VAC  
Battery backup: 12VDC  
Tamper/keyswitch zone  
Fire zone type

### Ordering references:

Penta XL board + keypad:	<b>5200751</b>
Penta XL board + keypad + metal housing:	<b>5200749</b>
Penta Plus XL board + keypad:	<b>5200752</b>
Penta Plus XL board + keypad + metal housing:	<b>5200748</b>
3721 AC transformer kit:	<b>5200510</b>

