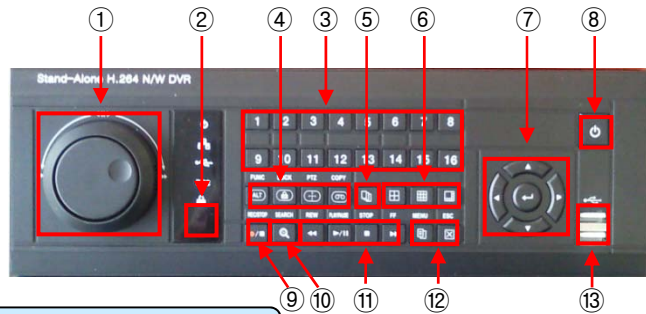


KTM3H Series User QUICK GUIDE

FCC/ CE, RoHS



Power On/ Off

DC 12V adaptor can be connected with DVR for power supply.
After DC 12V adapter connection, DVR power is turned on. After DVR is On, Power can be turned On or Off by button ⑧ .

Button Description

No	Button Description	No	Button Description
1	Jog & Shuttle	7	Up/ Right/ Down/ Left ENTER
2	Remote Controller	8	Power On/ Off button
3	CH selection and No. input	9	REC
		10	Search
4	FUNC (ALT) Lock (Button Lock) PTZ Backup (Copy)	11	REV (Fast backward PB)
			Play & Pause
			Play Stop
			FF (Fast Forward PB)
5	Sequential	12	MENU / ESC
6	QUAD/ 9/ 16 pictures	13	Two USB port
Mouse Icons			
1	Menu Setup On/ Exit	4	Manual (Continuous) On/ Off
2	Audio selection	5	PTZ function
3	Key Lock	6	Search

Live pictures



Full picture

QUAD picture

9 pictures

16 pictures

- * Live picture can be displayed like QUAD/ 9/ 16 picture by picture buttons, ⑦ .
- * Pictures can be switched sequentially by "Sequential button", ⑥ .
- * Mouse operation for live (Playback) display pictures
 - Left button of mouse: From (to) 4/9/16 pictures mode to (from) single channel.
 - Right button of mouse: Sequentially movement from single channel to 4/9/16 pictures.

Recording

RECORDING SETUP							480 / 480 FPS
CH	Resolution	Quality	FPS	REC	Audio	Lock	
01	NORMAL	HIGH	30	Schedule	ON	OFF	
02	NORMAL	VERY HIGH	30	Schedule	ON	OFF	
03	FULL	VERY HIGH	30	Schedule	ON	OFF	
04	NORMAL	HIGH	30	MANUAL	OFF	OFF	
05	NORMAL	VERY HIGH	30	MANUAL	OFF	OFF	
06	NORMAL	VERY HIGH	30	MANUAL	OFF	OFF	
07	NORMAL	VERY HIGH	30	MANUAL	OFF	OFF	
08	NORMAL	VERY HIGH	30	MANUAL	ON	OFF	
09	NORMAL	VERY HIGH	30	MANUAL	ON	OFF	
10	NORMAL	VERY HIGH	30	MANUAL	ON	OFF	
11	NORMAL	VERY HIGH	30	MANUAL	ON	OFF	
12	NORMAL	STANDARD	30	MANUAL	ON	OFF	
13	NORMAL	STANDARD	30	MANUAL	ON	OFF	
14	NORMAL	STANDARD	30	OFF	ON	OFF	
15	NORMAL	STANDARD	30	OFF	ON	OFF	
16	NORMAL	STANDARD	30	OFF	OFF	OFF	

Resolution:
D1, Half D1, CIF

Quality (5 step):
Very Low to
Very High

FPS: 1 to 30 FPS

REC: Manual,
Schedule,
EVENT, Off

Audio: On/ Off

Lock: On/ Off

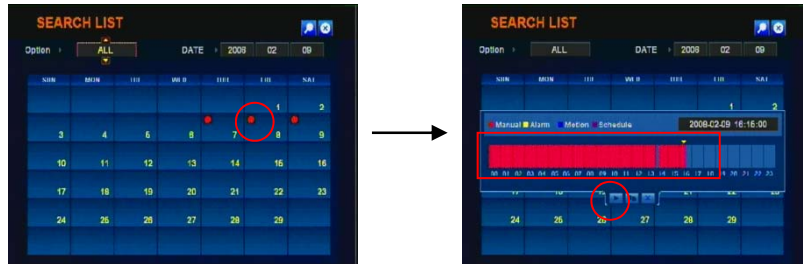
* Quick Recording Setup: All 16ch resolution can be set as same resolution with highlight bar, if "No. 1" button is pressed after pressing "FUNC (F1). Quality, FPS, REC, Audio and Lock can be set as same way.



* Lock: ON or OFF (If "Lock" is ON, this recorded file isn't be deleted, even though HDD over-writing is done. In order to prevent HDD Full, it will be needed to release LOCK function as "OFF")

* Pre-recording: Pre-recording can be set in EVENT setup because it is just for event recording (Motion and alarm)

SEARCH and PLAYBACK

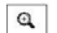

1. Normal Search by Manual, Event and schedule



- 1) Press "SEARCH" button ().
- 2) Press **ENTER** button in Calendar GUI and then select the date to playback.
- 3) Select "hour" to playback after pressing **ENTER** button.
- 4) Press "PLAY" button ().

2. Search by time



- 1) Press "SEARCH" button ().
- 2) Press **MENU** button in Calendar GUI. (by button or remote controller.)
 icon can be pressed for "SEARCH" (by mouse).
- 3) **ENTER** button can be pressed after selecting "date/ hour" to playback.

< Fast Playback button >

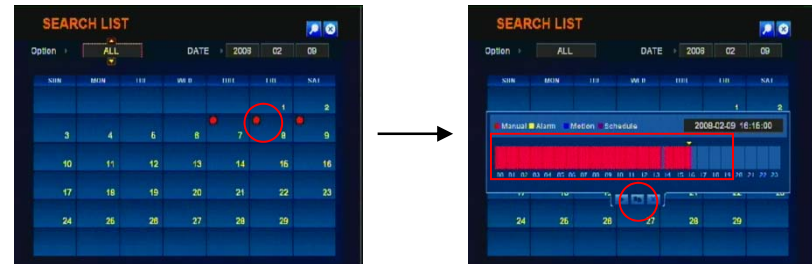
Jog/ Shuttle or  can be pressed for fast playback.



<Shortcut button definition >

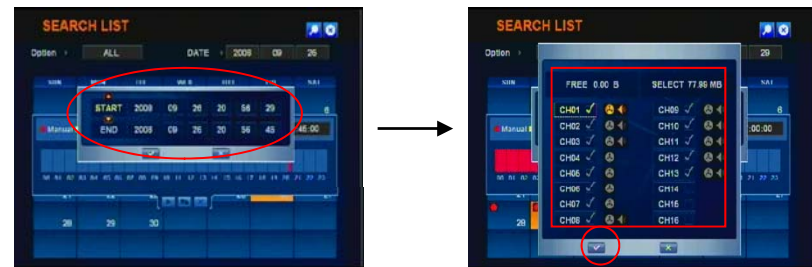
1. System Information Display: "**FUNC (F1)**" + **ENTER**
Video Format, HDD Info, IP address, version etc. will be displayed.
2. Motion tracking Display (under motion or alarm recording) : "**FUNC (F1)**" + **ESC**
3. **VGA resolution change from VGA to XGA**: "**FUNC (F1)**" + **STOP**

COPY (BACKUP)

1. Normal Search by Manual, Event and schedule



- 1) Insert empty Disk in DVD or CD R/W.
- 2) Press "SEARCH" button ().
- 3) Press **ENTER** button in Calendar GUI and then select the date to backup.
- 4) Select "hour" to backup after pressing **ENTER** button.
- 5) Press "COPY" button (). "USB" button in remote controller can be pressed.



- 6) Select "Date/ Hour" to backup.
- 7) Select channel(s) to backup.

*Before backup recorded files, select "COPY media" in COPY MENU.
(Backup Media: USB memory Driver or CD R, R/W, DVD +R/-R, R/W)

* The File Player to playback backup files can be copied together with backup files for convenient playback in any PC.

4. Selection of Audio Channel through speaker

If **MENU** button is pressed just after "**FUNC (F1)**" is pressed, the audio channel to playback or live through speaker can be selected.

5. Remote Controller ID Selection: F1 (FUNC) + number button.

The DVR with corresponding Remote Controller ID can be operated.