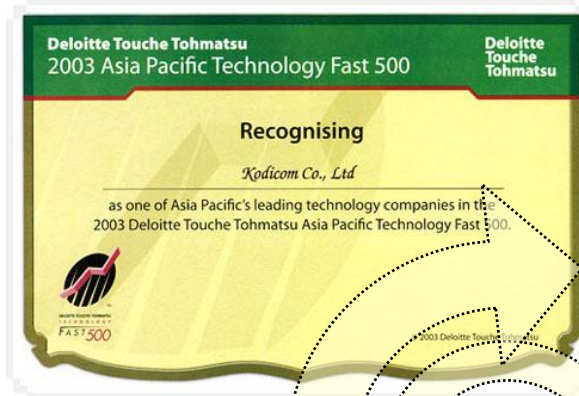


## 2-1. Certification / Awards

### 2003 ~ 2005 World's Top 50 Security Companies / AS International Magazine



<p><b>Cogent Systems</b></p> <p>Headquarters Base <b>U.S.</b></p> <hr/> <p>Industry <b>Biometrics</b></p> <hr/> <p>2003 Sales <b>US\$32.1 million</b></p> <hr/> <p>2002 Sales <b>US\$16.3 million</b></p> <hr/> <p>Revenue Growth <b>96.7 percent</b></p> <p><b>31</b></p> <p>A provider of Automated Fingerprint Identification Systems, or AFIS, and other fingerprint biometric solutions to governments, law enforcement agencies and other organizations worldwide.</p>	<p><b>Taiwan Video System</b></p> <p>Headquarters Base <b>Taiwan</b></p> <hr/> <p>Industry <b>CCTV</b></p> <hr/> <p>2003 Sales <b>US\$29.8 million</b></p> <hr/> <p>2002 Sales <b>US\$25 million</b></p> <hr/> <p>Revenue Growth <b>19 percent</b></p> <p><b>32</b></p> <p>Acknowledged as a professional display monitor manufacturer in the specific application field like point-of-sale/ATM, surveillance, industrial automation--aims to integrate advanced video process technology from input to output.</p>	<p><b>Everspring Industry</b></p> <p>Headquarters Base <b>Taiwan</b></p> <hr/> <p>Industry <b>Intercom/Video doorphone</b></p> <hr/> <p>2003 Sales <b>US\$29.6 million</b></p> <hr/> <p>2002 Sales <b>US\$12.8 million</b></p> <hr/> <p>Revenue Growth <b>129.5 percent</b></p> <p><b>33</b></p> <p>Established in 1980. Everspring is set to deliver comprehensive home automation, home networking security systems, alarm systems, and CCTV.</p>	<p><b>Kodicom</b></p> <p>Headquarters Base <b>Korea</b></p> <hr/> <p>Industry <b>Digital surveillance</b></p> <hr/> <p>2003 Sales <b>US\$28.5 million</b></p> <hr/> <p>2002 Sales <b>US\$25 million</b></p> <hr/> <p>Revenue Growth <b>14.1 percent</b></p> <p><b>34</b></p> <p>Grown to be the worldwide DVR (Digital Video Recorder) manufacturing company since its founding in October 1996. It has achieved accomplishment by developing a DVR with the world's top-notch specifications.</p>	<p><b>Nice Systems, Digital Video</b></p> <p>Headquarters Base <b>Israel</b></p> <hr/> <p>Industry <b>Digital surveillance</b></p> <hr/> <p>2003 Sales <b>US\$ 27.6 million</b></p> <hr/> <p>2002 Sales <b>US\$ 22.9 million</b></p> <hr/> <p>Revenue Growth <b>20.5 percent</b></p> <p><b>35</b></p> <p>Nice Systems is specialist in multimedia digital recording solutions, applications and related professional services for business interaction management since 1986. The figure here shows the sales performance in video security section only branded as NiceVision.</p>
--	---	---	--	---

**APPROVED**

By GENUINE KODICOM / CHOICECYCLE.SG at 9:54 am, Sep 05, 2009

## 3-2. Reference

### 2. Overseas

#### ▶ Main Reference

#### ▶ Government

- Steven's Hospital
- Stadex Stationers
- Excel Petrol Stations
- Shell Petrol Stations
- BP Petrol Stations
- Engen Petrol Stations
- Durban Metro City
- South Africa
- International Health Distributors
- National Data Systems
- SpoorNet – South African Railways
- Canadian Army
- Ottawa Police Facility
- Immigration Canada
- Immigration US (Mexico Border)
- The Velvet Lounge Station
- US Coast Guard

#### ▶ Bank & Insurance

- Imperial Bank, BOE Bank, Dutcher Bank
- JP Morgan Bank,
- South African Revenue Services
- Johannesburg Stock Exchange

#### ▶ Corporation

- McDonalds
- Burger King
- South African Airways
- Gensec Mining House
- South Ocean Cables
- Denel Aviation
- Menlyn Shopping Center
- Metro Home Center
- Durban Harbor
- Elphar Marjon Motor spare distributors
- Hercules Meat Distributors
- Spar Distributors
- EMI : Music Distributors
- Pyramid Conference Center
- Nu World Distributors
- Squires Pub
- Arco Gas Stations
- City Group
- Quizno's
- Brooks Hotel
- Subway
- Alberta Food & Restaurant Association
- Costco
- Namitech
- Alexander Forbes
- KPMG
- British Airways
- Edgars Stores
- Medscheme – Medical Aid Company

**APPROVED**

By GENUINE KODICOM / CHOICECYCLE.SG at 9:55 am, Sep 05, 2009

## 3-1. Reference

### 1. Domestic

#### ▶ Main Reference

#### ▶ Government

- The Defense Ministry
- US Armed Forces
- Junju, Paju, Goyang City Halls
- Prisons (Yeoju, Seosan)
- City Railway Works
- Incheon International Airport
- Seoul Arts Center
- Suwon Water Industry
- Kunsan Korea Maritime & Port Authority
- East Sea Korea Maritime & Port Authority
- The World Cup Stadium
- Agricultural Cooperative Association
- Subway CD/ATM 670 Corners
- Cultural Property Preservation Bureau
- Naval 2nd Fleet Transmitting Station
- Pusan #8 Pier

#### ▶ Corporation

- POSCO
- INIsteel
- Migliore (Suwon, Kwangju)
- Changwon Korea Heavy Industry
- Chamshill Lotte World
- Pusan Hyundai Department Store
- Asian Naval Base
- 3M Yoido Head Office

## Vision / Strategy

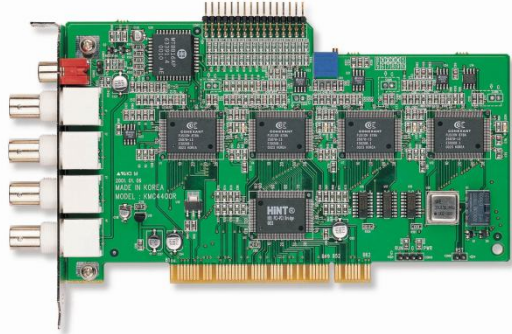
#### ▶ Bank & Insurance

- Citi Bank
- Foreign Exchange Bank 1,040 Branches
- Hana Bank
- H&CB, Kookmin Bank
- Chohung Bank 450 Branches
- Kookmin Bank each branch
- Kyoungnam Bank
- BC Card Company
- Daehan Investment Trust Securities Co., Ltd.
- LG Investment Securities Co., Ltd. Each branch
- Shinheung Securities Co., Ltd. (Pundang Branch)
- Hyundai Securities Co., Ltd.
- Daehan Investment Trust Securities Co., Ltd.
- Good Morning Securities Co., Ltd.
- Korea Stock Exchange, Yoido Head Office
- Korea Security Computerization
- Korea Financial Telecommunications & Clearings Institute
- Automated Financial Post Office Corner and Business Sites

**APPROVED**

By GENUINE KODICOM / CHOICECYCLE.SG at 9:55 am, Sep 05, 2009


## 1. KMC-4400R Capture Board

Photograph	Feature		KMC-4400R
 <p data-bbox="241 1157 636 1189"><b>KMC-4400R Capture Board</b></p>	<b>Image Display &amp; Record Speed</b>	<b>Display</b>	<b>NTSC : 120fps(Max) PAL : 100fps(Max)</b>
		<b>Recording</b>	<b>NTSC : 120fps(Max) PAL : 100fps(Max)</b>
	<b>Camera Input Channel</b>		<b>16Ch : High Speed Video Capture Support</b>
	<b>Image Resolution</b>	<b>NTSC</b>	<b>640x480, 320x240, 160x120</b>
		<b>PAL</b>	<b>768x576, 384x288, 192x144</b>
	<b>Video Output (External Monitor)</b>		<b>1 CH, CVBS 75Ω, 1Vp-p, Support only 4CH Model, Auto-Select Type</b>
	<b>Operating System</b>		<b>Windows 98SE, 2000, XP (Home, Pro, Embedded)</b>
	<b>Support Model</b>		<b>DN-4408S, 44208S, 4416, 44216, 3416, 34216</b>
	<b>Others</b>		<b>Watchdog function, System LED (Run/Power)</b>

**RECEIVED**

By GENUINE KODICOM / CHOICECYCLE.SG at 9:58 am, Sep 05, 2009


## 3. KMC-8416A Capture Board

Photograph	Feature		KMC-8416A
 <p>KMC-8416A Capture Board</p>	Image Display & Record Speed	Display	NTSC : 480fps(Max) PAL : 480fps(Max)
		Recording	NTSC : 480fps(Max) PAL : 480fps(Max)
	Camera Input Channel		16 CH : Realtime Display & Recording 32 CH : High Speed Video Capture Support (KMC-8416A x2 Pieces)
	Image Resolution	NTSC	640x480, 320x240, 160x120
		PAL	768x576, 384x288, 192x144
	Video Output (External Monitor)		1 CH, CVBS 75Ω, 1Vp-p, Split Screen Type
	Audio Input		4 CH, Mono Input, G.726
	Operating System		Windows 2000, XP (Home, Pro, Embedded)
	Support Model		DN-6816, 68232
	Others		Watchdog function

**RECEIVED**

By GENUINE KODICOM / CHOICECYCLE.SG at 9:59 am, Sep 05, 2009

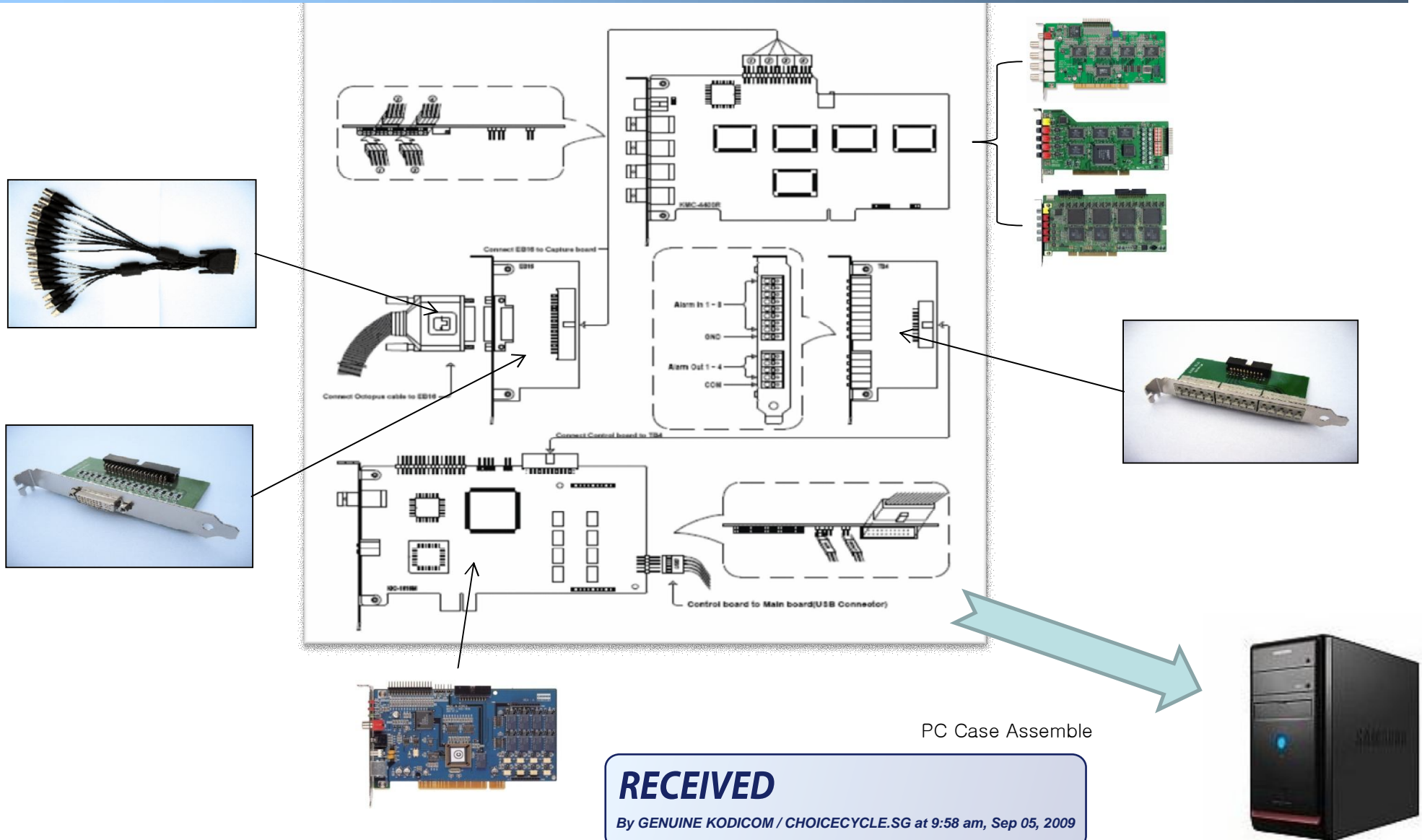
## 4. KIO-1616 I/O Board

Photograph	Feature	KIO-1616M
 <p><b>KIO-1616 I/O Board</b></p>	<b>Camera Input Channel</b>	<b>16 CH : for External Monitor Output</b>
	<b>Video Output (External Monitor)</b>	<b>1 CH, CVBS 75Ω, 1Vp-p, Auto-Select Type</b>
	<b>Sensor Input</b>	<b>8CH, 16 CH (Optional)</b>
	<b>Control Output</b>	<b>8 CH, 16 CH (Optional)</b>
	<b>P/T/Z Control</b>	<b>RS-422 Output (Speed Dome Camera, RX Receiver)</b>
	<b>Operating System</b>	<b>Windows 98SE, 2000, XP (Home, Pro, Embedded)</b>
	<b>Support Model</b>	<b>All PC Type Model Support</b>
	<b>Others</b>	<b>Watchdog function, System LED (Run/Power)</b>

**RECEIVED**

By GENUINE KODICOM / CHOICECYCLE.SG at 10:00 am, Sep 05, 2009

## Configuration – 1 : Normal PC Case Assemble with Option Boards



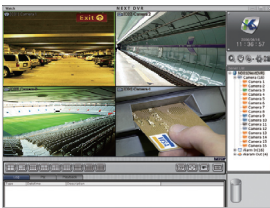
# Kodicom CMS (Central Management System)

## Why use CMS?

Kodicom CMS (CENTRAL MANAGEMENT SYSTEM) is an integrated security management system that provides a useful solution for central monitoring station operation. CMS can provide total center-control monitoring solutions for a variety of large security installations that need protection and monitoring. For example, in a football stadiums, retail chains and banks, numerous CMS Surveillance Systems may be connected with hundreds of cameras and integrated with IR sensors, motion sensors, fire detectors, alarms, and POS systems by network to one or many central monitoring centres. Furthermore, it is possible to assign multilevel users to restrict and control all surveillance areas.

## Main CMS Display & Function

### Watch function



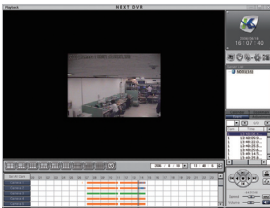
#### Watch display

- Cameras on the DVR system will be displayed on the screen.
- The user can also choose which camera he wishes to view via Drag & Drop making the screen completely customisable.

#### Quad display / Automatic Display / 1 channel conversion button

- Display is the function that divides four channels on the display screen.

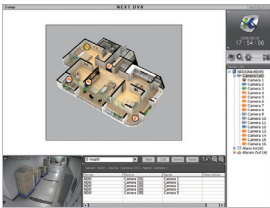
### Playback function



#### Playback method

- The playback function is for playing back recorded data.
- When playing, users can choose to Rewind, Pause or Fast Forward.
- Quick Search is possible for fast data search other options include play back speed volume control and Bookmark function search back to live mode.

### E-map function



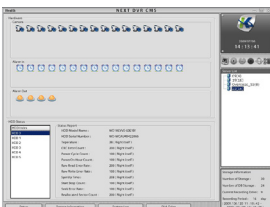
#### Map position

- Name of Map and position can be chosen and camera positions highlighted.

#### Registration of camera location

- The user can designate DVR, Alarm in, Alarm out via Drag & Drop feature.

### Health Monitor function



#### DVR Status Monitoring

- User can watch camera sensor, Alarm and HDD operation status at real-time, and easily check the system log and many other details and information
- Fast reaction when a problem happens in unit.
- Multiple DVR monitoring at the same time

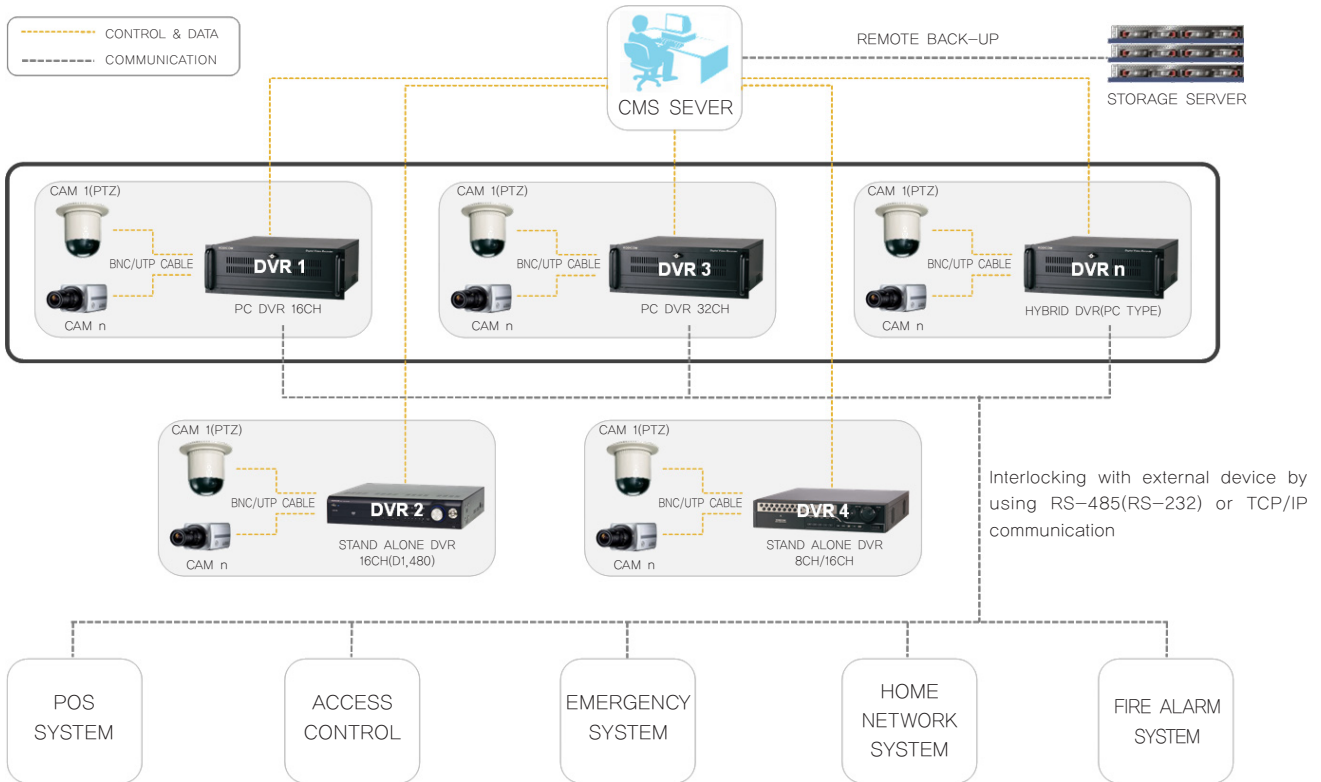
## Main Functions

- Main function: Watching, Playback, E-Map, Setup
- Flexible Screen Size
- E-Map Zoom In/Out, Edit, Management (BMP, JPG, PNG, GIF Image)
- Page function
- Health Monitor
- Reporting
- 4, 6, 9, 10, 13, 16, 25, 33, 36, 64 Division
- Multi-Server Searching (Live Mode)
- Instant Playback, Instant Backup

**RECEIVED**

By GENUINE KODICOM / CHOICECYCLE.SG at 9:56 am, Sep 05, 2009

■ CMS & System Diagram

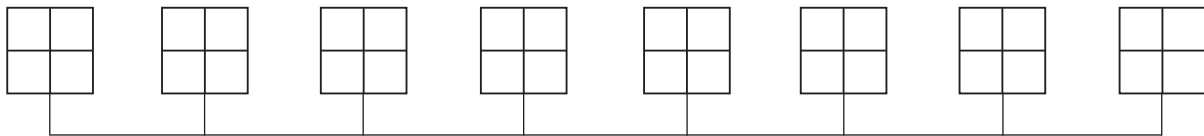


interlocking such as Home Network & Emergency Bell, you can set the most strongest system and design a large scale of controlling system by our specialized spot board.

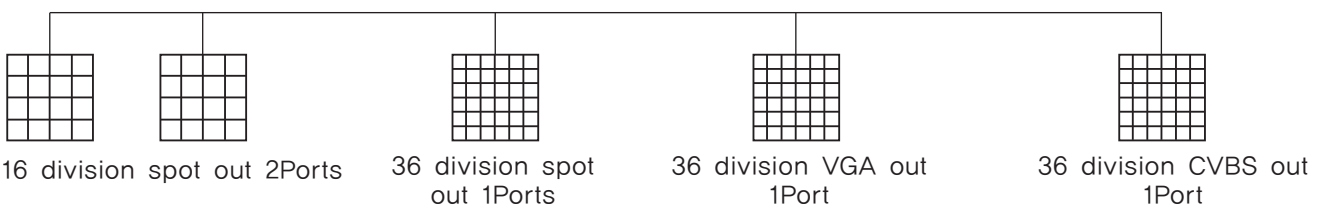
Multiplexer in DVR!  
 Make a most powerful controlling system through additional SPOT CARD!!!

■ SPOT CARD specification

4 division spot 8Ports



+ Additional SPOT CARD



- ND-3132 supports total 13 ports of image display. User can construct a synchronized monitoring system for important watching site