

- Network Tasks
- Create a new connection
  - Set up a home or small office network
  - Change Windows Firewall settings
  - Disable this network device
  - Repair this connection
  - Rename this connection
  - View status of this connection
  - Change settings of this connection

- Other Places
- Control Panel
  - Network Places
  - Documents
  - Computer

Details

d

LAN or High-Speed Internet

Connected, Firewallled  
Realtek RTL8139/810x Family ...

d Properties

General Authentication Advanced

Connect using:  
Realtek RTL8139/810x Family Fast

This connection uses the following items:

- Client for Microsoft Networks
- File and Printer Sharing for Microsoft Networks
- QoS Packet Scheduler
- Internet Protocol (TCP/IP)

Uninstall Properties

Transmission Control Protocol/Internet Protocol, wide area network protocol that provides communication across diverse interconnected networks.

- Show icon in notification area when connected
- Notify me when this connection has limited or no connectivity

OK Cancel

Internet Protocol (TCP/IP) Properties

General

You can get IP settings assigned automatically if your network supports this capability. Otherwise, you need to ask your network administrator for the appropriate IP settings.

Obtain an IP address automatically

Use the following IP address:

IP address: 192 . 168 . 0 . 219

Subnet mask: 255 . 255 . 255 . 0

Default gateway: 192 . 168 . 0 . 1

Obtain DNS server address automatically

Use the following DNS server addresses:

Preferred DNS server: . . .

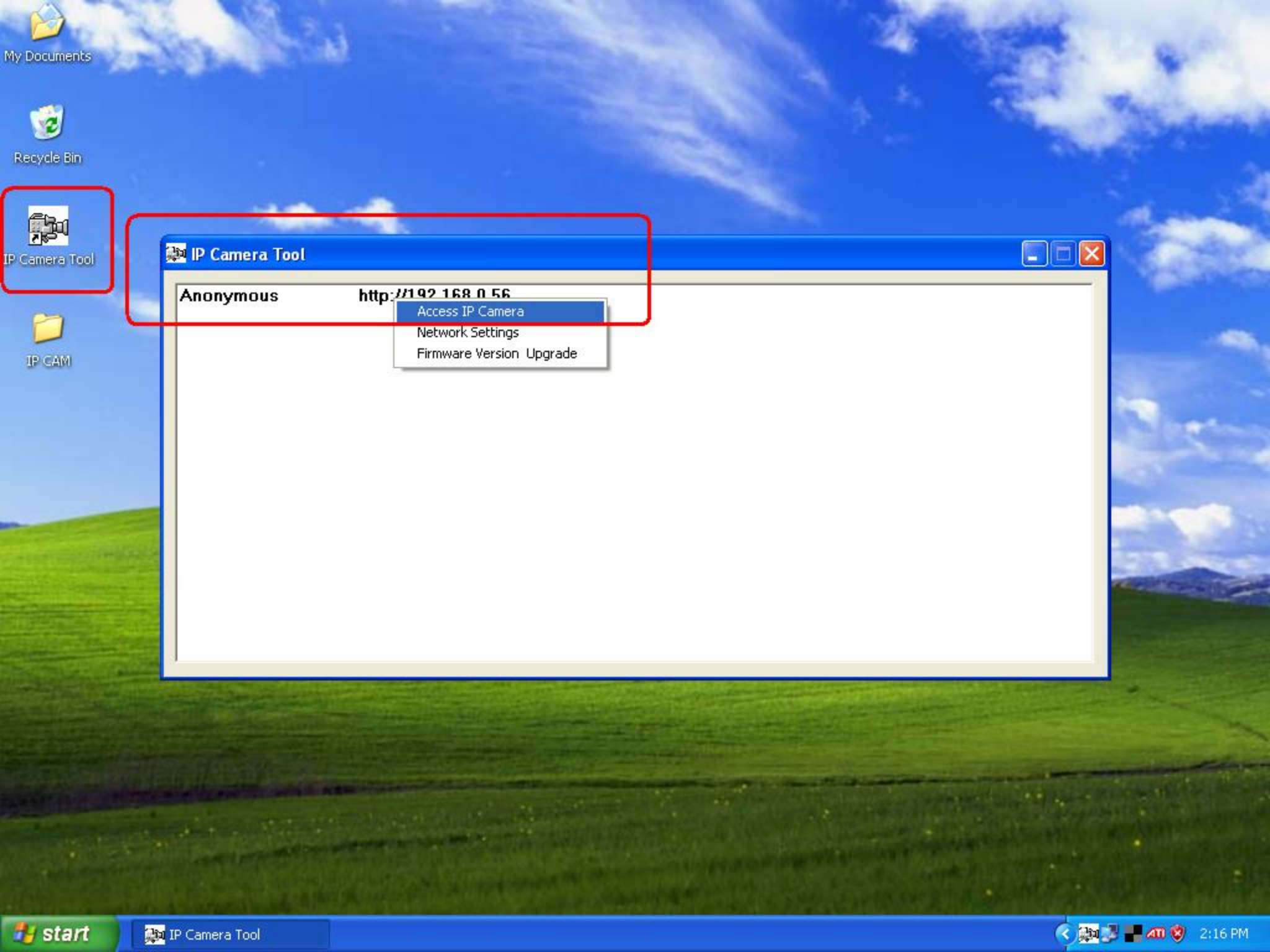
Alternate DNS server: . . .

Advanced...

OK Cancel

IP Camera Tool

\_200710221...



My Documents



Recycle Bin



IP Camera Tool



IP CAM

**IP Camera Tool**

Anonymous      **http://192.168.0.56**

- Access IP Camera
- Network Settings
- Firmware Version Upgrade

[Chinese\(gb2312\)](#) [English](#)



# IP Camera

Password:

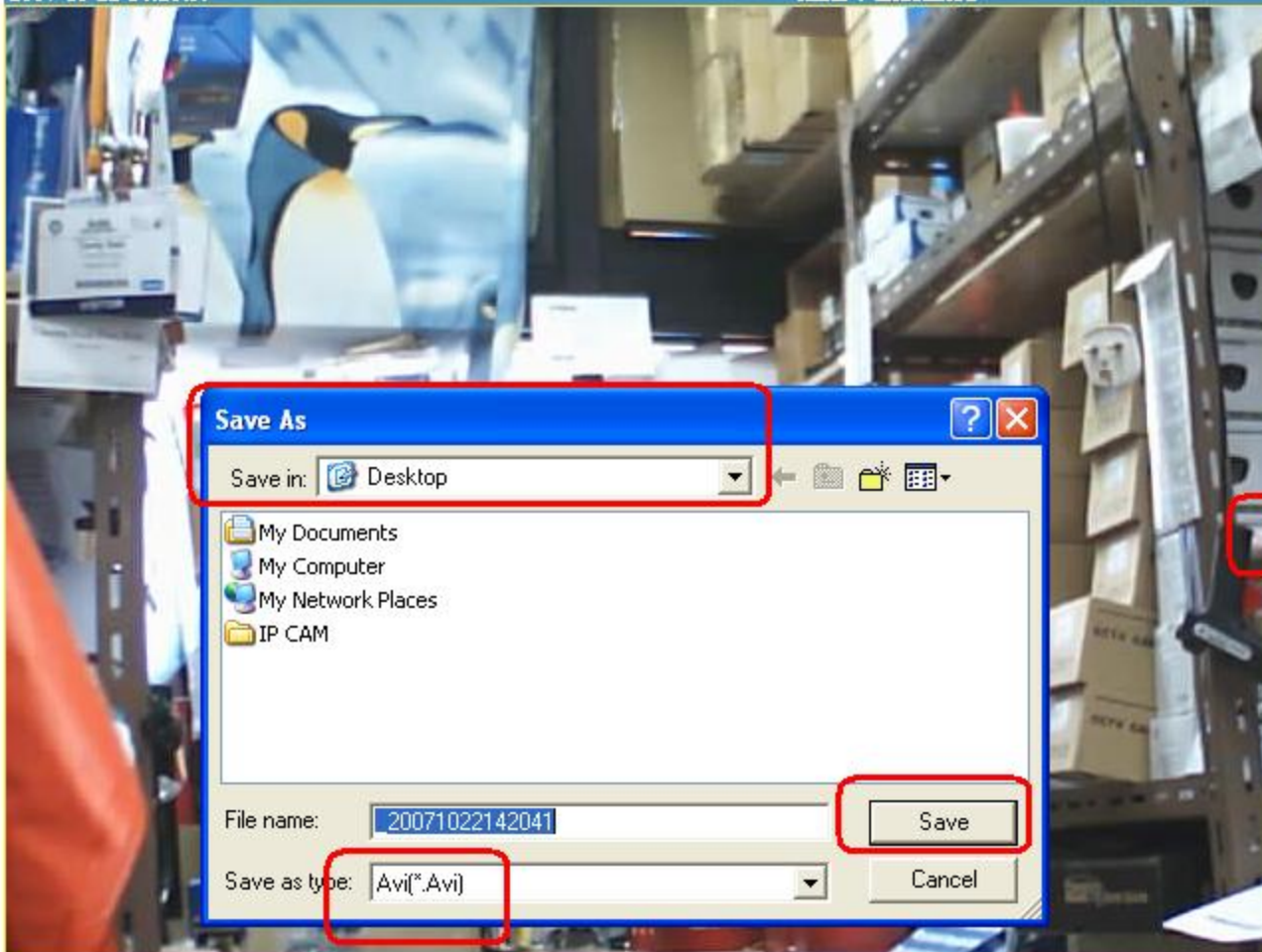
[Sign in](#)

NO  
PASSWORD

# @ IP Camera

2007-10-22 14:20:59

Alias : undefined



Resolution 640\*480  
Mode 50 HZ  
Parameter Brightness  
Default 100

[Open](#) [Switch](#) [Close](#)

[Play](#) [Video](#) [Stop](#)

[Snapshot](#)

Record

1 2 3 4

Window Configuration

1 2 3 4

[Configuration](#)

**Save As**

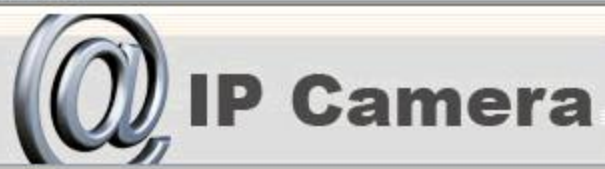
Save in: Desktop

- My Documents
- My Computer
- My Network Places
- IP CAM

File name: 20071022142041

Save as type: Avi(\*.Avi)

Save Cancel



2007-10-22 14:27:2

Alias: undefined

**Basic Setting**

Camera Clock Time:

Camera Alias:

Password:

Confirm Password:

**Alarm Setting**

Image Motion Detect

External Sensor Detect

Alarm Notify by Mail

**DDNS Setting**

DDNS Service:

DDNS User:

DDNS Password:

DDNS Host:

Proxy Server:

Proxy Port:

DDNS Status:

**Networking Setting**

Using DHCP

IP Address:

Subnet Mask:

Gateway:

DNS Server:

Http Port:

Auto Map Port by UPnP

Using Adsl Dialup

Adsl User:

Adsl Password:

Report Adsl IP by Mail

**Smtip Setting**

Using Preset Mailbox

Sender:

Receiver:

Smtip Server:

Smtip User:

Smtip Password:

- [Refresh](#) [Set](#)
- [Adjust Camera Clock](#)
- [Reset to Factory Setting](#)
- [Reboot Camera](#)
- [Restart DynDns Service](#)
- [Guide of Oray.net](#)
- [Monitor Camera](#)

# @ IP Camera

2007-10-22 16:40:53

Alias : undefined



Resolution   
Mode   
Parameter   
Default

[Open](#) [Switch](#) [Close](#)  
[Play](#) [Video](#) [Stop](#)  
[Snapshot](#)  
Record



Window Configuration  
   
1  2  3  4

[Configuration](#)

Window VISTA 100%  
Tested!!

