

# PROFESSIONAL ELECTRICAL DROP BLOT Model : DADB1

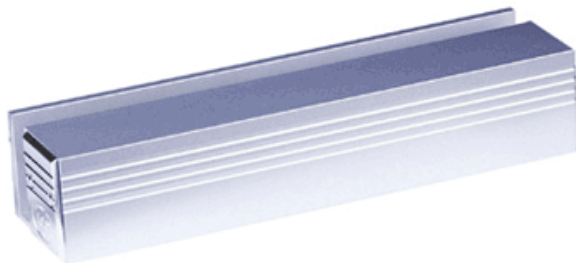


Professional Door Lock for Common Door (open one direction) and Multi Purposes Door (open two or more direction).  
Super Reliable and No Way to break in no matter how much forceful applied.  
Easy DIY with Diagram and Manual attached.

Model	DADB1
Operate Mode	Fail safe
Voltage	12VDC
Delay Time	0/3/6/9 (adj.)
Working Current	650mA
Standby Current	250mA
Holding Force	1000kg
Weight	1.05kg
Dimension	235x35x38 mm

Note: Specification subjected to change without notice

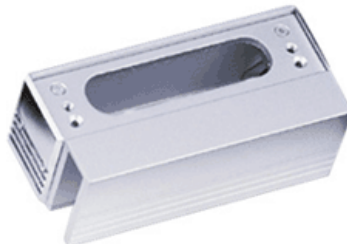
## Upper Casing DADB2 (OPTIONAL)



### Features:

- Easy to install, User friendly.
- Dimension: 130x60x48mm (LxWxHmm)
- Weight: 0.40kg

## Lower Casing DADB3 (OPTIONAL)



### Features:

- Easy to install
- Dimension: 130x60x48mm (LxWxHmm)
- Weight: 0.40kg