

Access Control Software Introduction

1. Installation and Uninstall	5
1.1 Installs software	5
1.2 Uninstall software	9
2. Base Setup	9
2.1.1 Commication Setup.....	10
2.1.2 Fingerprint Machine Information	12
2.1.3 Wiegand.....	13
2.1.4 Verification.....	14
2.1.5 Power Management.....	15
2.1.6 Access Control.....	16
2.1.7 Mifare Card.....	16
2.1.8 Other Setup	17
2.2 Department Management.....	18
2.3 User Management	19
2.4.Load from the USB flash disk	27
2.5 Management USB Flash Disk.....	28
2.5.1 Load in the User Data.....	28
2.5.2 Export user data	29
2.6 System Setup.....	30
2.6.1 Automatic monitoring	31
2.6.2 Parameter of Server.....	32
2.6.3 Function Configuration	32
3. Access Control Setup.....	33
3.1 Period Time.....	33
3.2 Group	34
3.3 Unlock Combination.....	35
3.4 User Privileges	36
4. Base Operation	38
4.1 Upload Setting	38
4.2 Open Door.....	38
4.3 Starting/Stopping Monitoring	38
5. Query.....	38
5.1 Record Query.....	38
5.2 Alarm Record.....	39
6. System Management	40
6.1 Operator Management	40
6.2 System Operation Log	42
6.3 Data Maintenance	42
6.3.1 Backup Database	42
6.3.2 Database Compress	43

6.3.3 Clear Old Data	43
6.4 Initialize System	44
6.5 Set Database.....	44
6.6 Set Password of Database	46

About Software

Who is still doubt, the fingerprint machine entry the Professional Access Control era , that all solution is bring forward which can be use with enter control system to limit the areas where each person is authorized to go, it might every be good to know where an individual has been. The current software version is Version 2.0 and its main functions are as follows:

- **Multi-terminal networking, real-time monitoring**

No matter Ethernet connection or 485 connections, fingerprint machine can be added into management software. After all fingerprint machines are added, click Start Monitoring and the system will start relative monitoring from the first unit to the last unit.

- **Real-time record download**

Fingerprint records on each fingerprint machine can be downloaded in real time. After download, these records will be stored in database automatically. If there is attendance software, you can set database directory of attendance software as directory of the database to store these records. Then you can check attendance records at any time.

- **Search records and output records in various formats**

When there are many fingerprint records, you can search records. During search, various condition search functions are defined, such as ID of fingerprint machine, time period, department, etc. Also records can be outputted in various formats.

- **Upload Access control setting**

This function is to upload basic Access control setting and user Access control setting.

- **Department management**

After department is created, in User Management you can assign employees to corresponding department.

- **User management**

This function mainly includes downloading user and fingerprint, editing user's

information and privilege, creating password for user, using “U are U fingerprint sensor” to add new user, uploading user and fingerprint.

· **Remote open door**

In program, you can click Open Door button to unlock selected door remotely.

· **Synchronizing time**

Synchronize time of fingerprint machines.

· **Upgrading firmware**

Upgrade firmware of fingerprint machine.

· **Initialize fingerprint machine**

In device management, you can initialize fingerprint machine.

Operation procedure steps as follows:

· **Hardware connection**

This is the first step. Connect all fingerprint machines and PC together. Use RS232 cable to connect when distance doesn't exceed 15 meters. Under the condition of distance over 15 meters, it is recommended to use Ethernet connection. RS485 cable can be used for connection when distance exceeds 80 meters and can connect for 1000 meters maximally.

· **User management**

This step is mainly to register each fingerprint machine or upload users. When there are many fingerprint records, it is recommended to use “U are U” Fingerprint Sensor to register users first. Then upload users to each fingerprint machine respectively. In user management, you can edit employee's information, create password for employee and set corresponding privilege.

· **Access control management**

For Access control, we define that all users are initialized as invalid user. User can become valid user in effective time period only after user is assigned privilege. So we need to upload Access control setting after we finish uploading users

1. Installation and Uninstall

1.1 Installs software

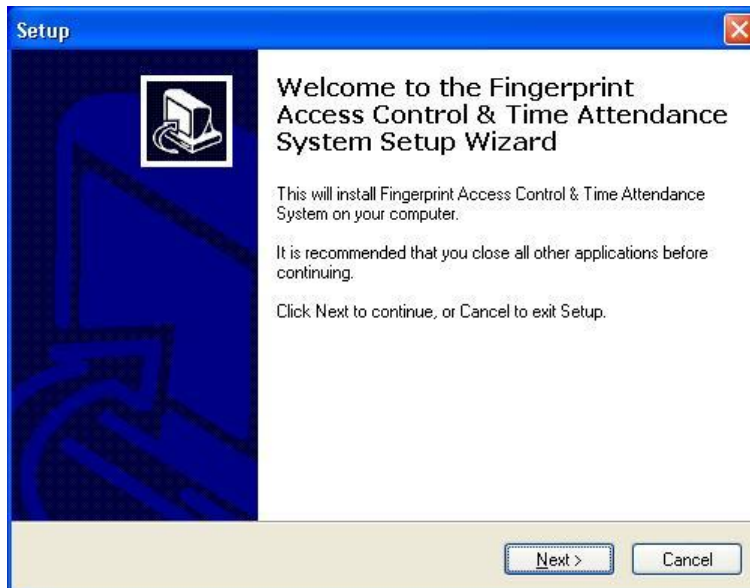
Before installing your software, it is better to shutdown other running application programs, in order to keep away conflict in installing process.

Note: Maybe some displaying figure does not tally with real contents please subject with CD you install

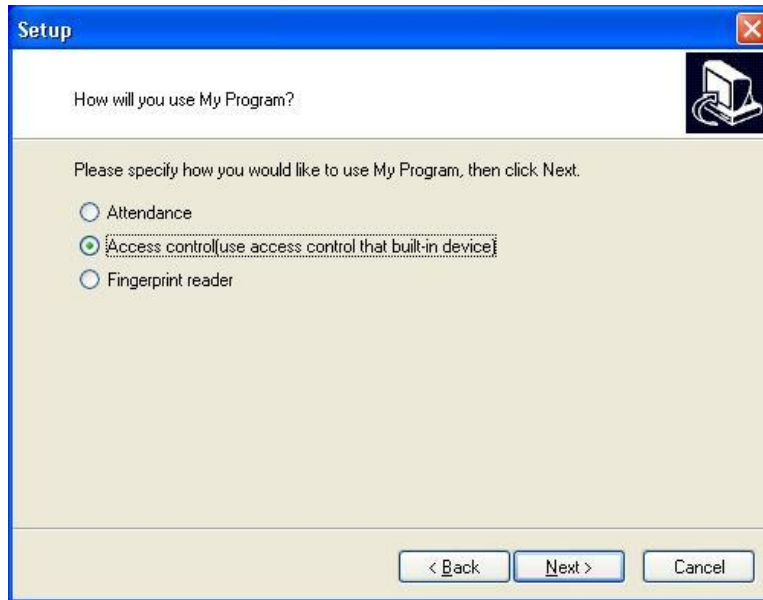
Please put the CD with software into CD-ROM, it will be running automatically and pop-up following interface.



Select an installation Language, Click **Next**, enter follow interface

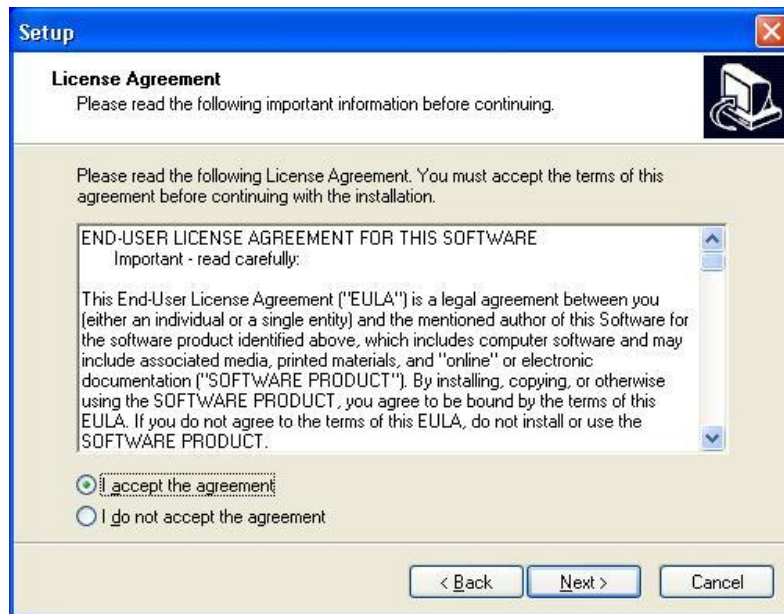


Click **Next**, enter follow interface:



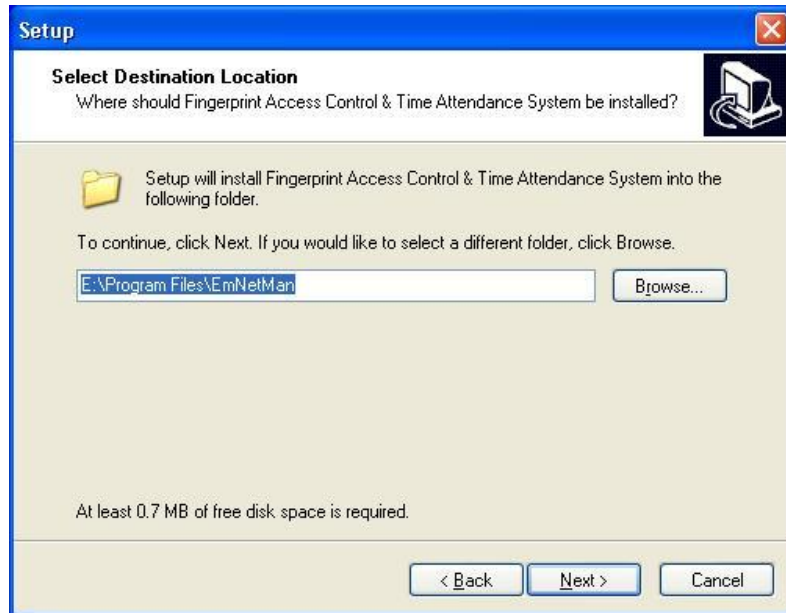
This interface fully provide with three way the software apply to, there use method ability to be shifted by the setting, take a **Access Control Device** as example, Choose **Access Control Device** .

Click **Next**, enter follow interface:

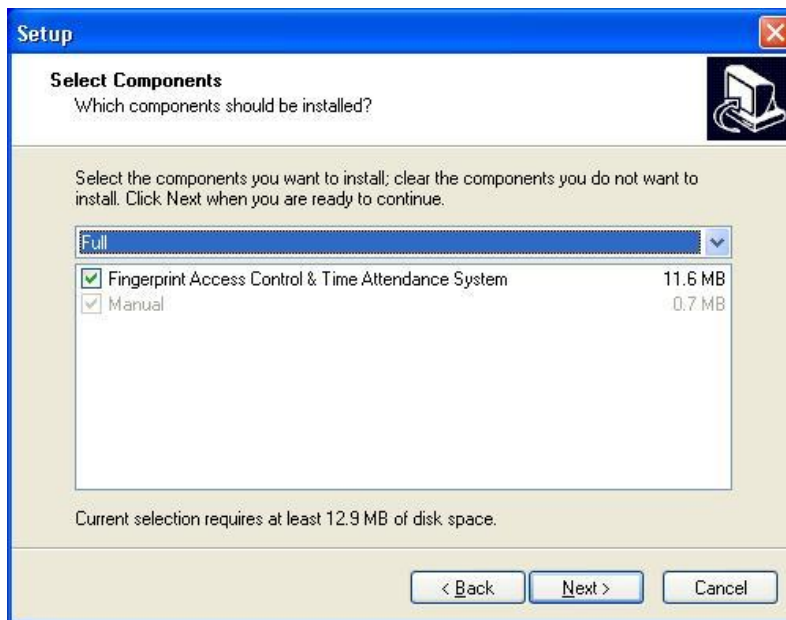


Please read this license Agreement carefully, if you agree to the terms, select the **I accept...** button and click **Next**.

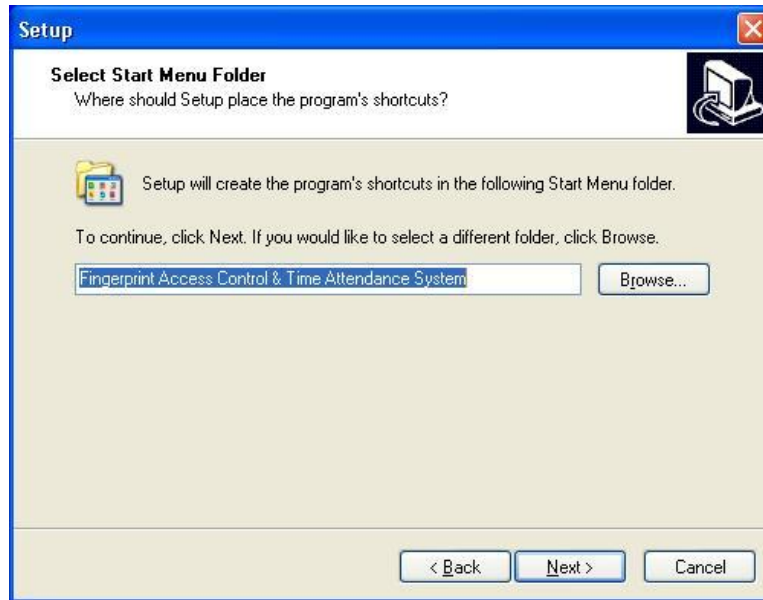
If you do not agree above terms, select **I don't accept.....**, the step will exit the nstalling program and return, enter following interface



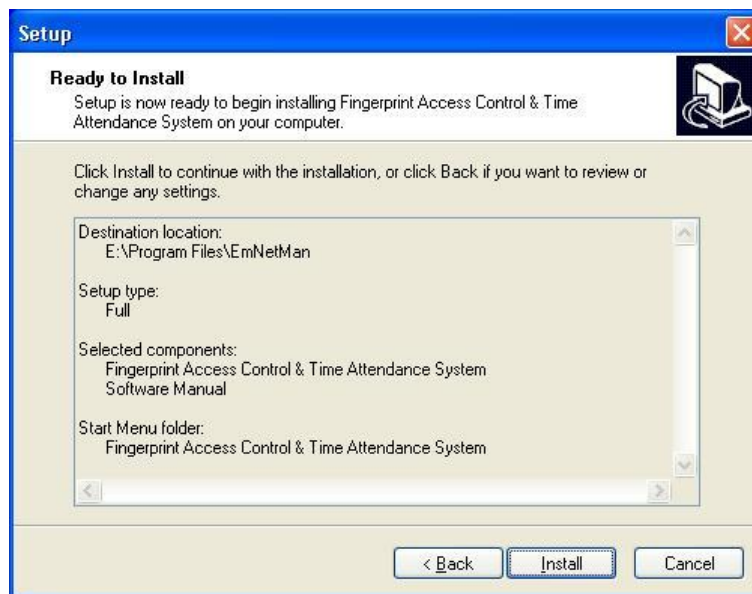
This interface applies to locate the folder of the fingerprint access control software, you may use the default folder, also can create or select a folder, and Click **Next** enters following interface:



After select installing component. Click **Next**, Enter following interface



This window is to confirm the name which is created in **Start/Program** item. Click **Next**, display following Interface



After enter into this interface, it is show that you have finish all configured to setup, if want to modify it, Click **Back** to return, Otherwise click **Install**, the installing program will copy and write corresponding information into hard disk, After finish installation, click **Finish** to complete the process.

1.2 Uninstall software

If you will not use the software and want to delete it from the computer, may perform following operation:

Exit from all ZK software **Access Control** management software, enter **Start-> Setting-> Control Panel-> Adding/ Cancel** to select ZK software and click **Cancel** to delete it, may be there are some files which is not to be all deleted, you ability to entry the installing directory to cancel the folder of zkemnetman

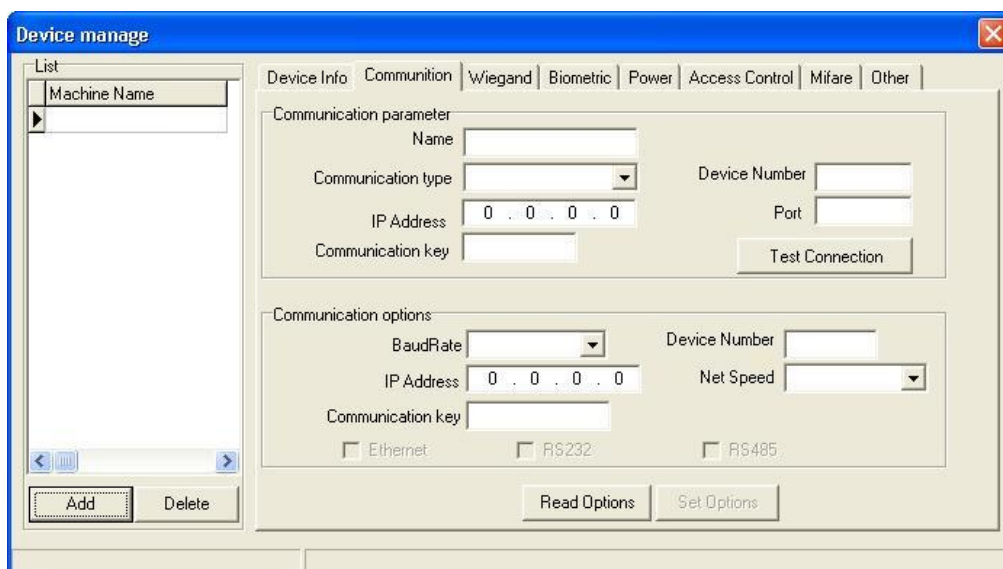
In the **Starting /Program** to run the access control system, in this portion of the Base Setup, you will review 6 module of the **base setup, Access Control, Base Operation, Query, Help**. The equipment must be added before using it.

2. Base Setup

In the portion of the Base Setup, include Department Management, User Management, Equipment Management, and Load from USB flash disk, System Setup and Exit

2.1 Equipment Management

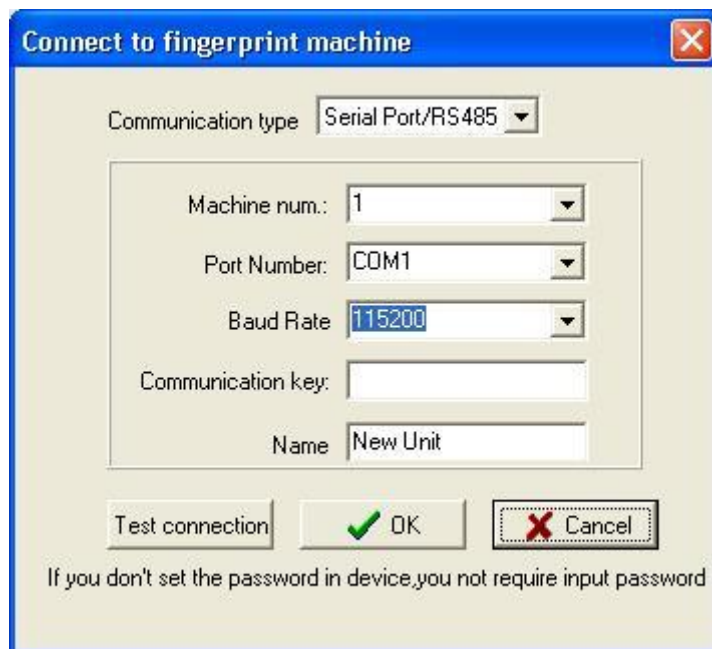
First add equipment, open **Equipment** in the **Base setup** menu, the display interface is following



Click **Add** button underside of the list, display interface is following

2.1.1 Commication Setup

Communication Setup: Click **Read Setup**; it can show communication setup of all equipment to be connected. Like as following figure



Communication type: Change to Serial Port/RS485

Machine num: Enter number of fingerprint machine according own requirement. For example, number of fingerprint machine is set to 1, and its identify ID is set to Machine 1.

Communication Key: it is not required to set under default condition. If communication password is set in fingerprint machine, then it is required to enter communication password correctly.

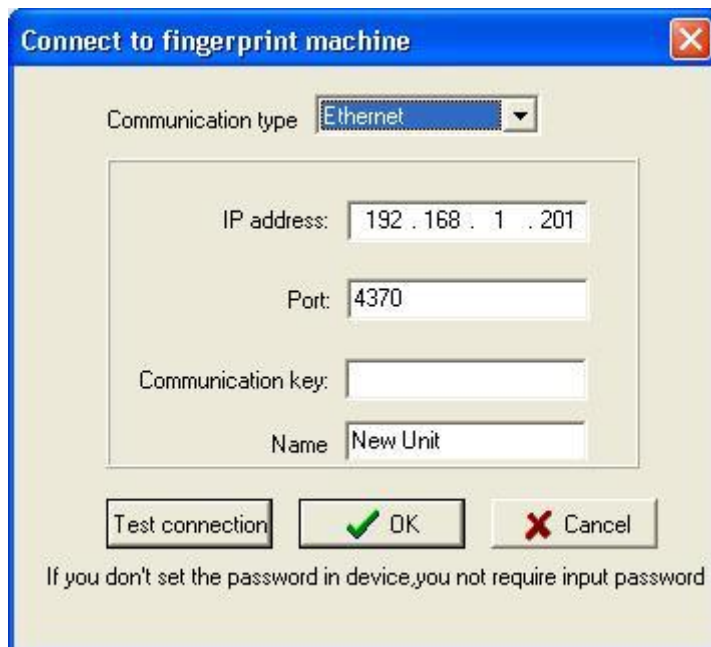
Port Number: Select communication port number that connects PC and fingerprint machine. Default value is COM1.

Baud Rate: Select 9600 (recommended)

Note: Above settings are used for RS485 connection. If RS232 connection is used, then Baud Rate should be changed to 115200, which will increase communication speed greatly.

Ethernet

(2) If the communication mode change to Ethernet, display following the interface:



Connect to fingerprint machine

Communication type: Ethernet

IP address: 192 . 168 . 1 . 201

Port: 4370

Communication key:

Name: New Unit

Test connection OK Cancel

If you don't set the password in device,you not require input password

Name: Enter name according own requirement. For example, name is set to Machine 1.

Communication key: it is not required to set under default condition. If communication password is set in fingerprint machine, then it is required to enter communication password correctly.

IP address: Default value is 192.168.1.201. IP address can be changed according to network segment of own local area network, but IP address cannot be conflicted with other IP address of any machine in the local area network. Please notice that infilling IP address of fingerprint machine should remain the same as IP address that is edit in fingerprint machine to be modified.

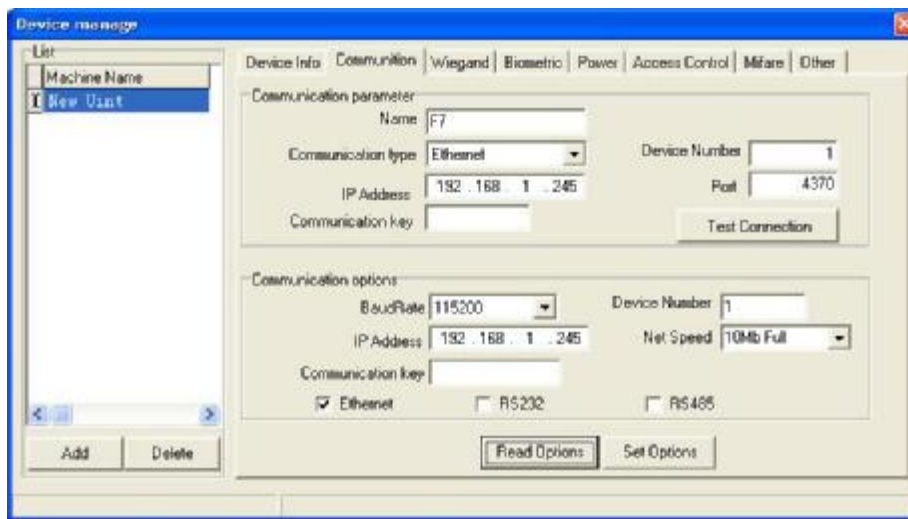
Port: Default value is 4370 (no need to change)

Two connection modes are described above. You can select different modes to connect devices as requirement by yourself. After finishing setting, click **Test Connection** button on the bottom to carry out connection testing. After **Connection Success** appears, click **Save** button to save setting of this fingerprint machine. If **Connection Failure**, please check setting of fingerprint machine and communication setting. You can use the same method to add next fingerprint machine.

After all fingerprint machines are added, icons of fingerprint machines that are added will display in **List** on the left of **Device Manager**. If you want to edit information of fingerprint machine, ability to read setup of fingerprint machine firstly, then you can directly modify it, click **Apply Setup** button below to complete modifying. If you want to delete one fingerprint machine, select the fingerprint machine and click **Delete** button below.

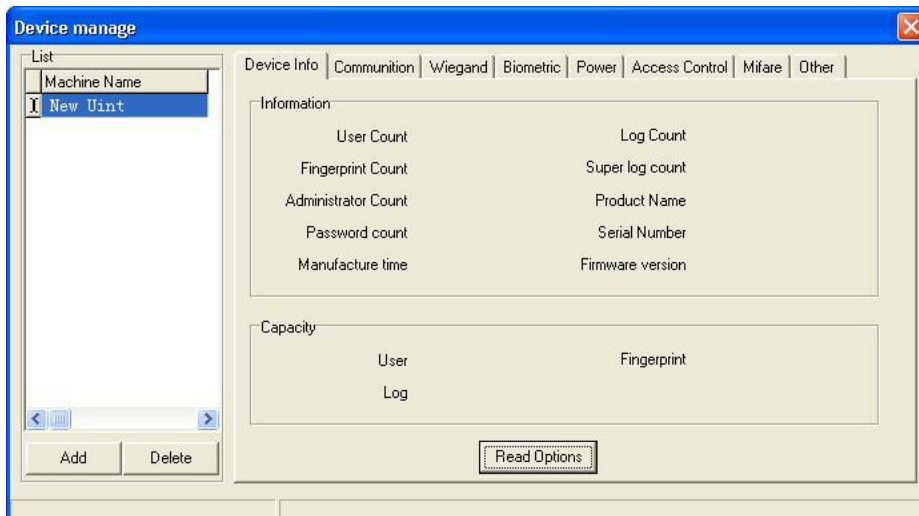
Read setting

If you want to check connection information of one fingerprint machine, click **Read Setting** to get connection information of that fingerprint machine.

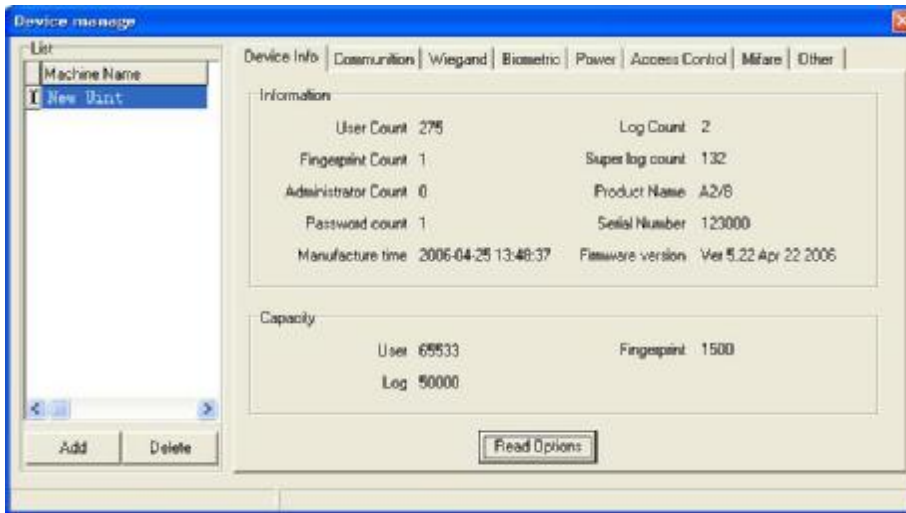


2.1.2 Fingerprint Machine Information

Click **Fingerprint Machine info** in the **Equipment Management** item, display interface is following:

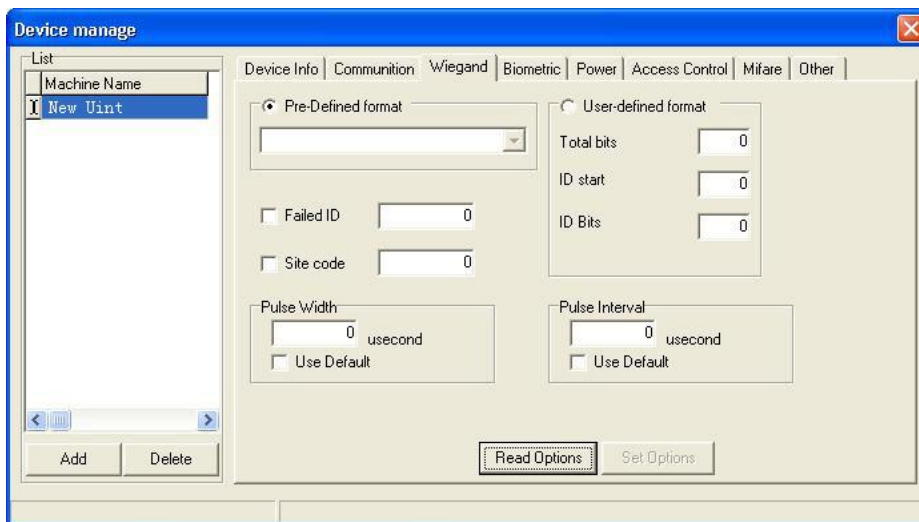


Click **Read Setup**, the base information of fingerprint machine will be list. Like following Figure:



2.1.3 Wiegand

Click **Wiegand** in the **Equipment Management**, display interface is following:



Click **Read Setup** to obtain all kinds of wiegand parameter which store in the fingerprint machine; there are four **Defined Formats** in the drag –down volume to select. Ability to choose a wiegand 26 or wiegand 34.

Defined Format: this format has been defined and built in the system; User doesn't need to define the length of Bit and the location of information. There are four default defined format: wiegand26 with device ID、wiegand34 with device ID、wiegand26 without device ID、wiegand34 without device ID. The wiegand 26 with device ID mean that the W26

output format along with equipment ID and the wiegand26 without device ID point that the W26 output format doesn't own the unit ID, Here the equipment ID is defined by following: if there is no set of the site code, then it will output machine code. And if the site code has been set, it will output the defined site code (which is similar the machine code, there different is that this code is defined by user and can recycle to use, range is 0-255)

Fail ID: Export Fail ID after verified is fail, when it has been selected; its output range is 0-65534.

Site Code: similar the machine code, which different is that this code is defined by user and it can be recycled in different unit, range is 0-255)

Self-define Format: User define Wiegand output format by herself

Total Bit: the length of output format

ID begin: The start location of the ID code in the total bit

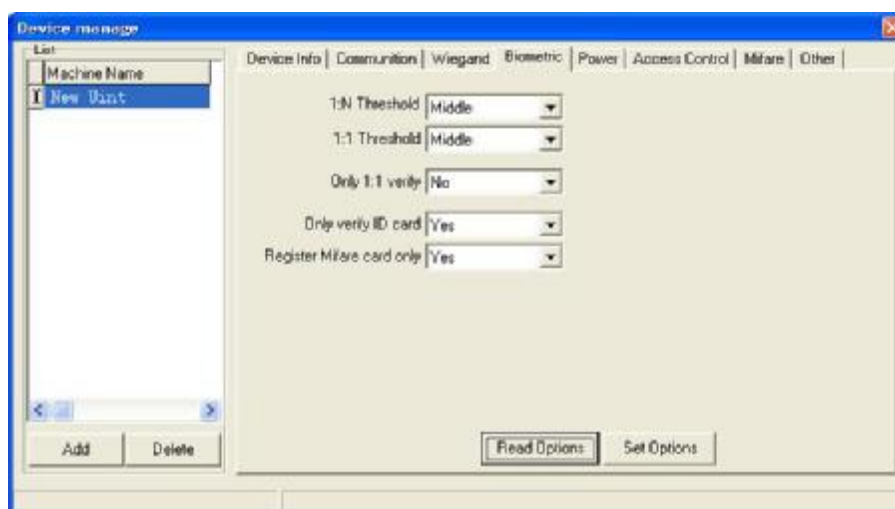
ID Bit: The length of ID code

Pulse Width: the default to send pulse width time is 100µs, if the controller isn't able to receive the Weigand signal, can adjust value from 20 to 800

Pulse Interval: the default value is 900 µs, ability to adjust it from 200 to 20000.

2.1.4 Verification

Click **Verification** in the **Equipment** item to read setup, following interface display



1: N Match Threshold: A predefined number, often controlled by a biometric system

administrator, which establishes the degree of correlation necessary for a comparison to be deemed a match. If the score resulting from template comparison exceeds the threshold, the templates are a **match** (though the templates themselves are not identical).the default value is **high**, you can modify it

1:1 Match Threshold: It mean that match fingerprint threshold after presenting the Card, the default value is **high**.

Only Verification No. Card: It is mainly designed for ID card, when you choose **Yes**, a user directly use ID card to verify enough, to verify doesn't need to press fingerprint. When you choose it as **NO**, you must verify fingerprint after present the card until pass

Only 1:1 Match: This feature is only available that a user own fingerprint, ID card or Mifare card for verification, can configure **Only 1:1 Match**, if you choose **Yes** to this setup, must first present a card, and then press fingerprint. If doesn't slide a card, there is no response to fingerprint in the unit.

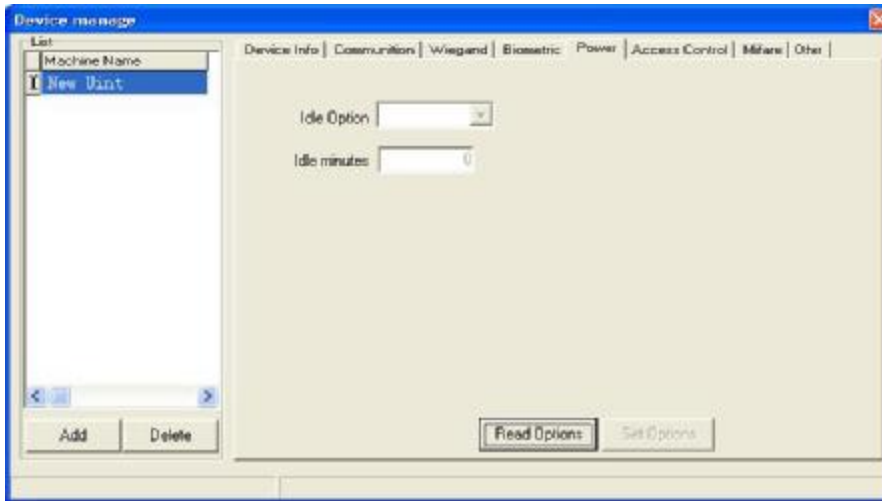
Must Register Mifare Card: there are two statuses to register a Mifare card, if the card was configured to **Must Register**, it is only to verify the user who's ID has stored in the fingerprint machine. The user No. to be store will not be verifying.

When you choose the item as **NO**, no matter there are user's ID information in the unit whether or not, it will export as the user and fingerprint template which is store in the card are verified successfully.

You can change the option according you real statue to achieve the best result.

2.1.5 Power Management

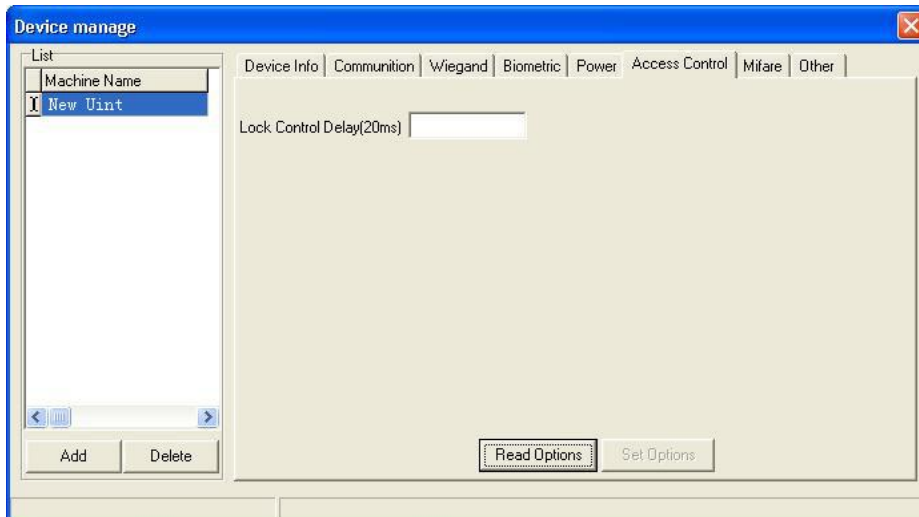
Click **Power Management** to read setup. The following is display interface:



Firstly read the parameter of **Power Management**, modify the state of **Idle Setup** and minutes of **Idle Time**, then click the **Application Setup** to complete set. When the idle time is 0, then the idle setup function is invalid. When the value more than 0, the machine will enter into idle state after arrives at define time.

2.1.6 Access Control

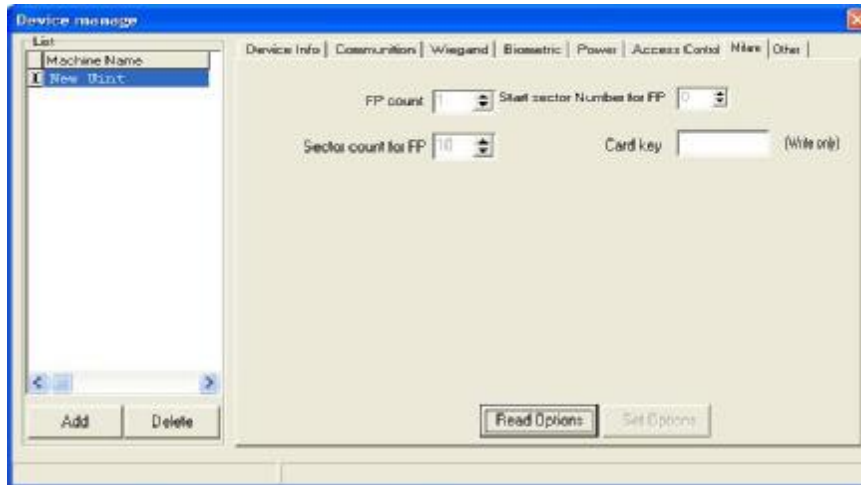
Click **Access Control** to obtain Setup, display interface as follow:



Delay time of lock control apply to determine unlock hour, the min unit is20ms, in the normal condition is 100—200ms.

2.1.7 Mifare Card

Click **Mifare** , display follow interface:



Fingerprint Amount: How many fingerprints are stored in the Mifare card

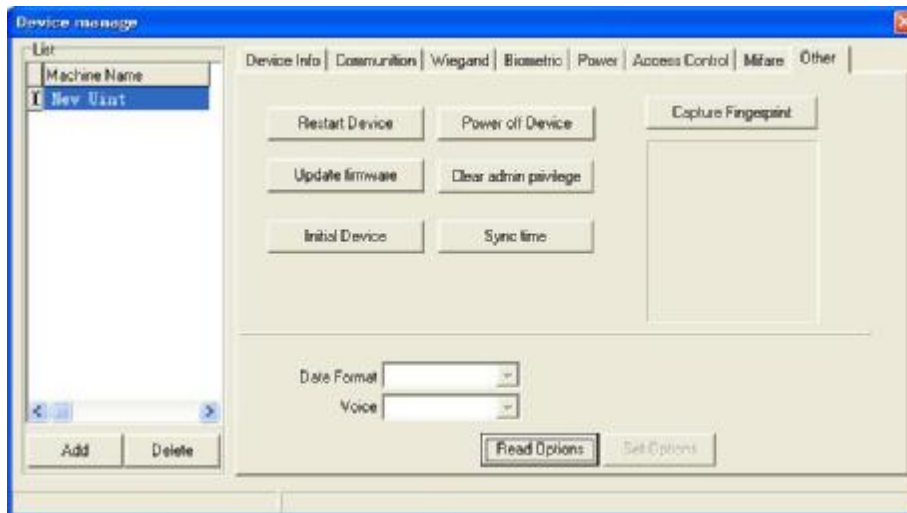
Fingerprint First Sector: the first sector of Mifare card to store fingerprint

Fingerprint Total Sector: fingerprint appropriate total sector.

Password of card: Read and write password of card, you only can set it, can't obtain it.

2.1.8 Other Setup

Click **Other Setup** the following appear:



This module provide with mainly convenience to configure equipment.

Restart Unit: in the list select a device and Click the name of the device to restart fingerprint machine.

Clear Administer Privilege: this function can clear all administer privilege which has registered in the fingerprint machine. First choose the name of the device from the list,

then to do it

Upgrade Firmware: We suggest that user doesn't use function a random, after receivers the manufactory notice, according to the guide which factory offer to do

Initialize Equipment: This function is mainly used to clear all data in the reader.

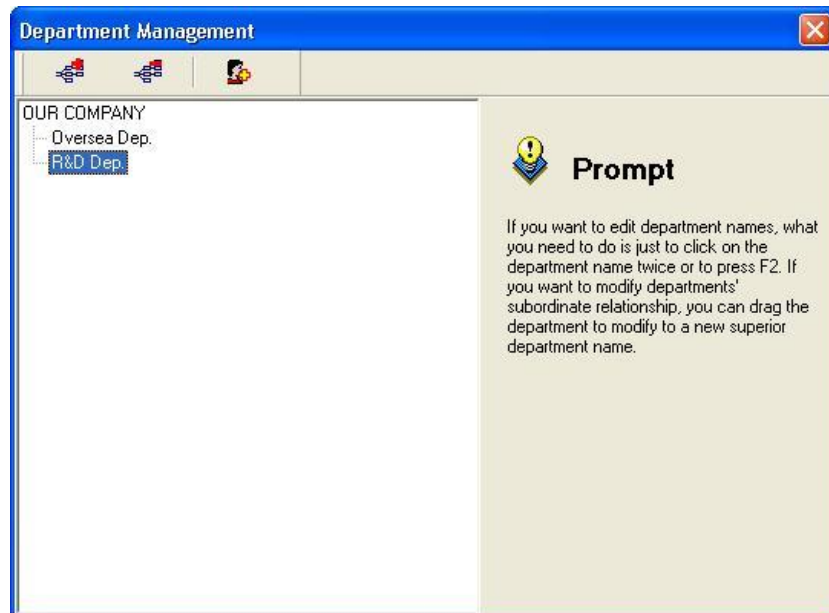
Seize Fingerprint Image: This function can be used to view fingerprint image, if want to inspect fingerprint image, please place finger on the sensor window, don't move, and then click the button, and will see the fingerprint




Date formats: Select the date formats from drag- down box, this data formats appear on the starting interface of fingerprint machine.

Voice function: Utilize this function to determine the voice of the fingerprint device on or off.

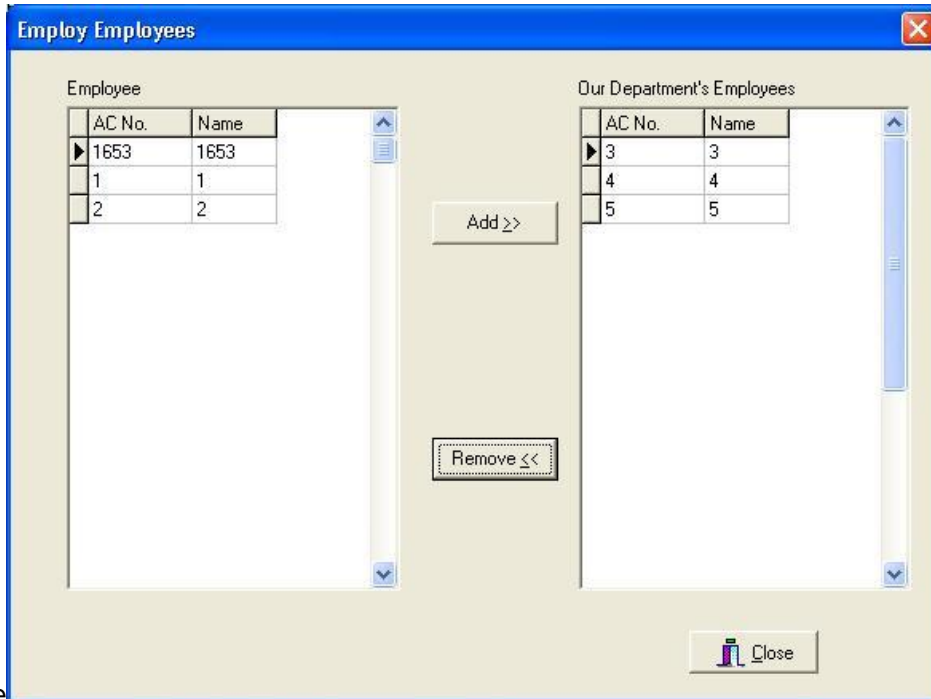
2.2 Department Management

Click **Department Management** in the **Base Setup** menu, pop –up the **Department Management** main interface, like as following figure.



Click  or  to add or delete a interrelated department,  is **Enrolling Department Staff** Button.

After established a new department, if want to shift a staff to another department, first select the head -office, then click Enrolling Department Staff button, pop-up following

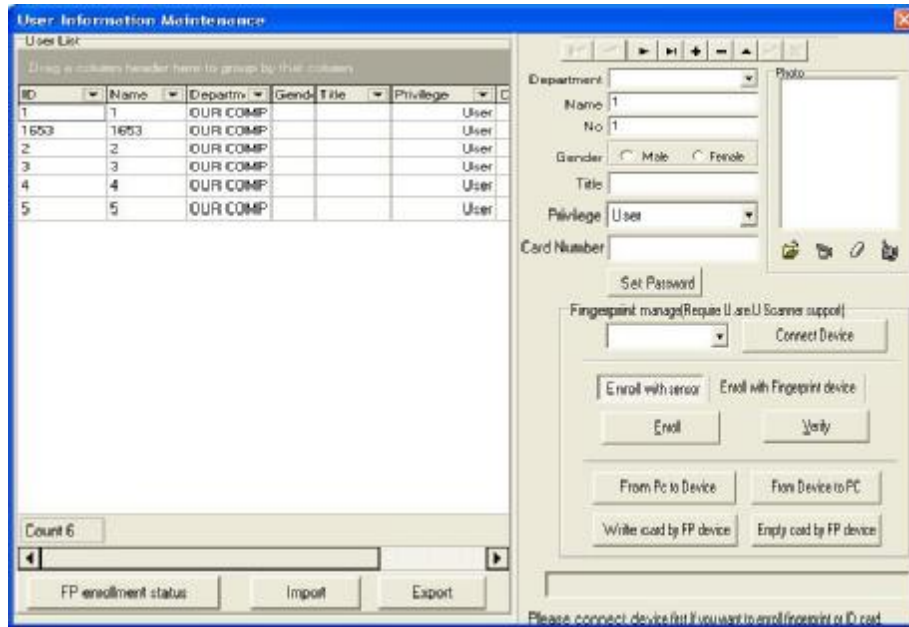


interface

Select the staff of corresponding department and add it to column, click enroll staff button.

2.3 User Management

User management provides maintenance work for staff information. Click **User Management** from drag-down menu of **Basic Setting**, and main window of department management will pop up as follows::



(1) User list

Sort Order: Click the name of field. Choose a triangle symbol which is beside the field, according to ascending order to arrange when the triangle symbol point upwards, otherwise, the triangle symbol point downwards that means the sort order follow the descending order, you can click triangle symbol to change the rise or down rank.

Statistic: the software can automatically count the total record and also can count grouping record.

Left side is user list and right side is user maintenance setting area. If one staff is redeployed from headquarter to other department, click corresponding department from down drag buttons of **Department**, a dialog will appear and ask whether the staff is redeployed to this department or not. Here, you can set user's privilege. If you want to change one user to other identity, for example administrator, first select this user in list on the left and then select **Administrator** from down drag options of **Privilege** on the right. If you want to add password to one user, first select this user in list on the left and then click **Set Password** to add password. After this user is uploaded to fingerprint machine, one user number will be added in password registration. Therefore, this user can not only use fingerprint, but also use password when identifying.

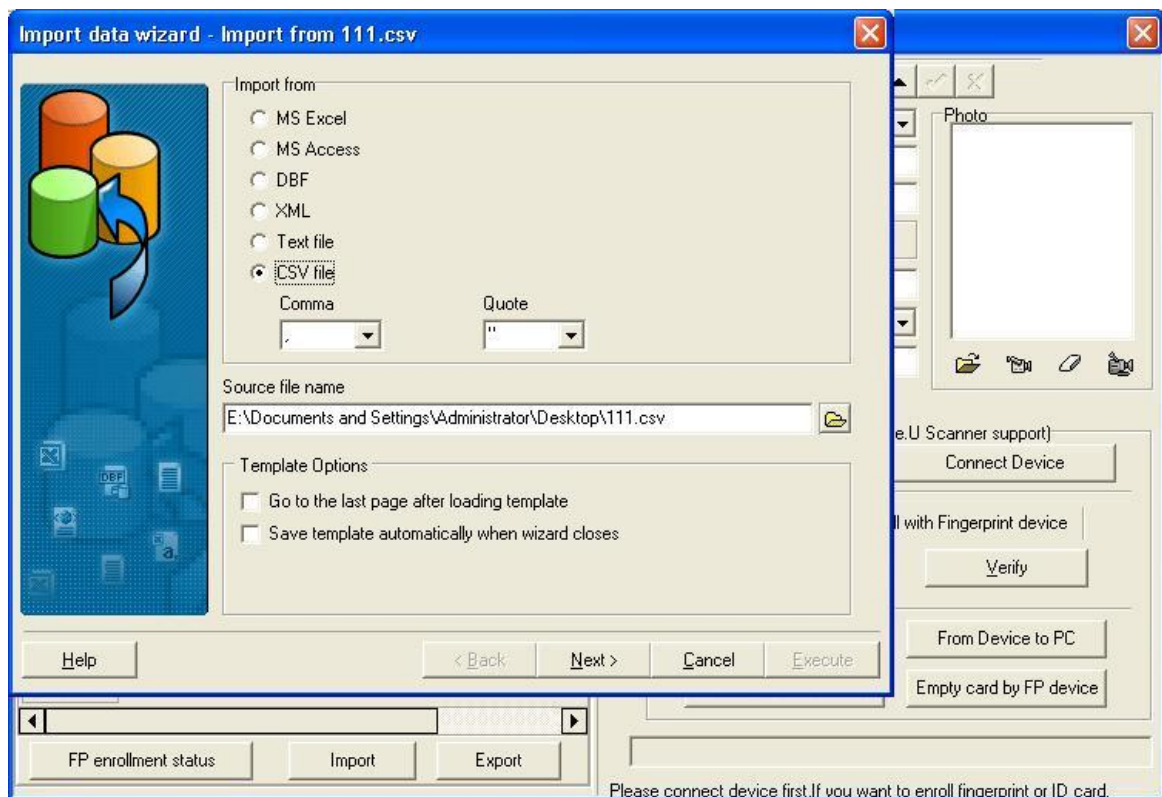
(2) Enroll fingerprint State: this item will show every user enrolling State:

(3)Import: This function can realize that this importing software support all kinds of format user's data file.

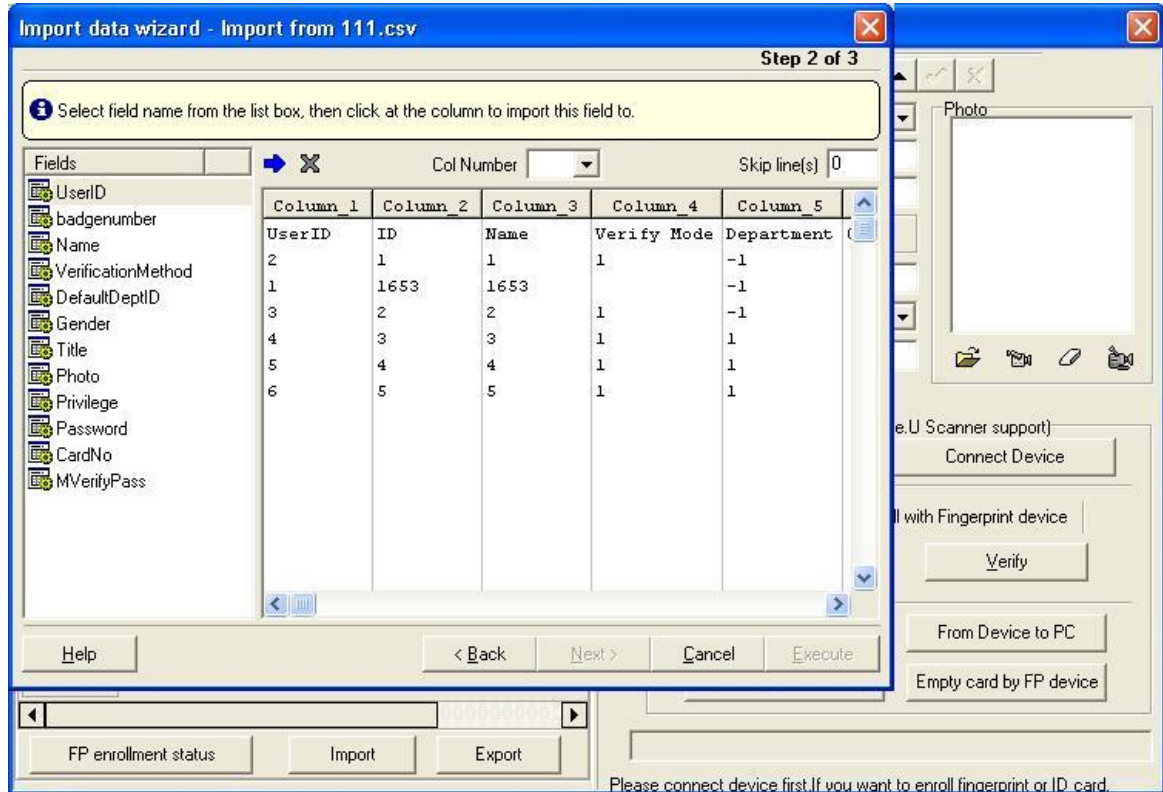
This system support following format data to import

MS Excel、MS Access、DBF、XML、Text File、CSV file, we recommend use the CSV file to import, the following example which take CSV file to import user's data is used to illustrate how to import data.

(1)、First click the radio button of CSV file, then select the file that want to be import.



(2)、Click **Next**, the following figure appear



The left side list is a field list, the right side is a import file rank, there are Skip line(s) on the right-up part, that means want to skip amount of the line, if the first line to be import isn't material data, you can fill 1 here, that show to skip the first line to import data.

Fields List Explain:

UserID: The ID only is used in the system interior, **it is useless to import the fields, please don't use the field**

BadgeNumber: User code, this code is that user adopts the number in the fingerprint machine and the software.

Name: User name, these fields must exist.

VerificationMethod: User's verification method. This item can be neglected.

DefaultDeptID: Department ID. If you wan to import the data from other origin, this item can be neglected.

Gender: Males or Females

Title: Title

Photo: photo, can be neglected

Privilege: Privilege, can be neglected.

Password: Password can be neglected.

CardNo: ID card number can be neglected.

(3)、First choose the field in the Fields list as to import, then select the corresponding rank in the right side list. The Fields list will automatically attach the corresponding number to the name of field, such as it is, arrange all fields and corresponding rank after to complete, click next.

If you want to cancel a field's setup, first choose the field, and then click corresponding rank, the software will cancel this field's setup.

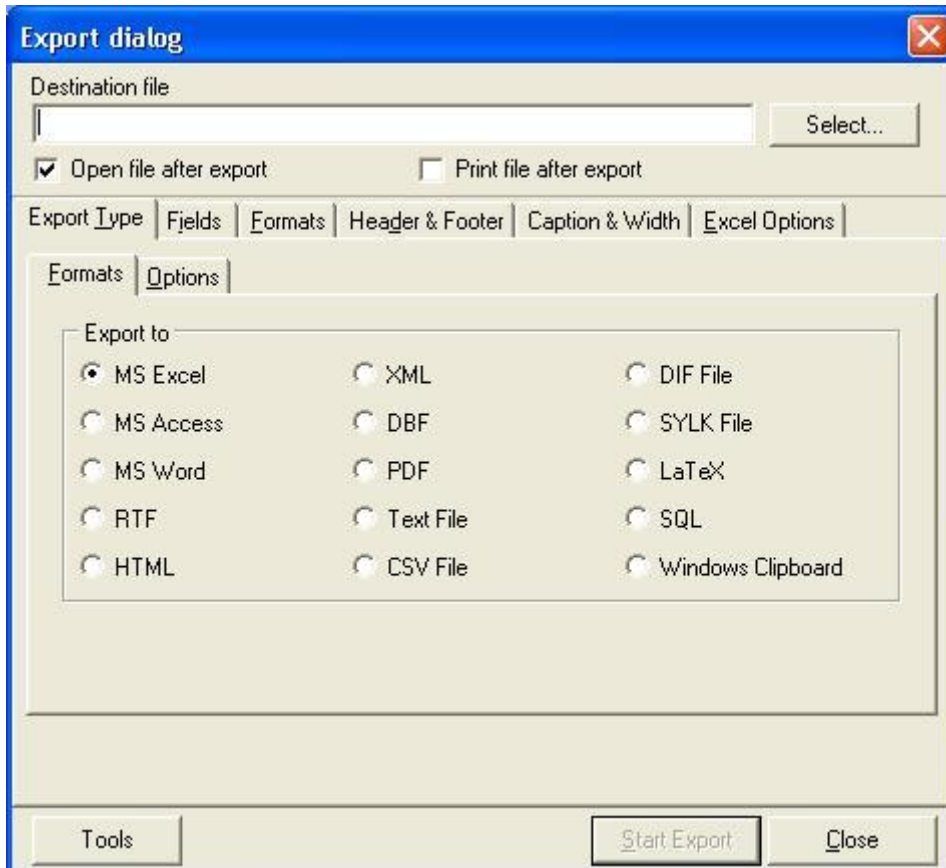
(4)、Click **Execute** button to run importing operation.

Export: This function can realize that the software export user's data via all kinds of format which can be support by the software. In order to it is convenient to supply third party to use.

Following, take the exporting MS Excel file as an example to explain:

Click the **Export** button, appear following interface

1. Select the object file which is to be exported



2、Click **Star Export** button to export the file via default format, otherwise, can configure

exporting content through to click the different option card.

Fields: Select the field to be export, the default format is all, it is only to export field's content after selected field.

Formats: Be exporting format of defined all kinds of field value.

Header & Footer: The file is starting and ending of the text.

Caption & Width: The title and width of field

Excel Options: Set font

Transfer User's Information and Fingerprint

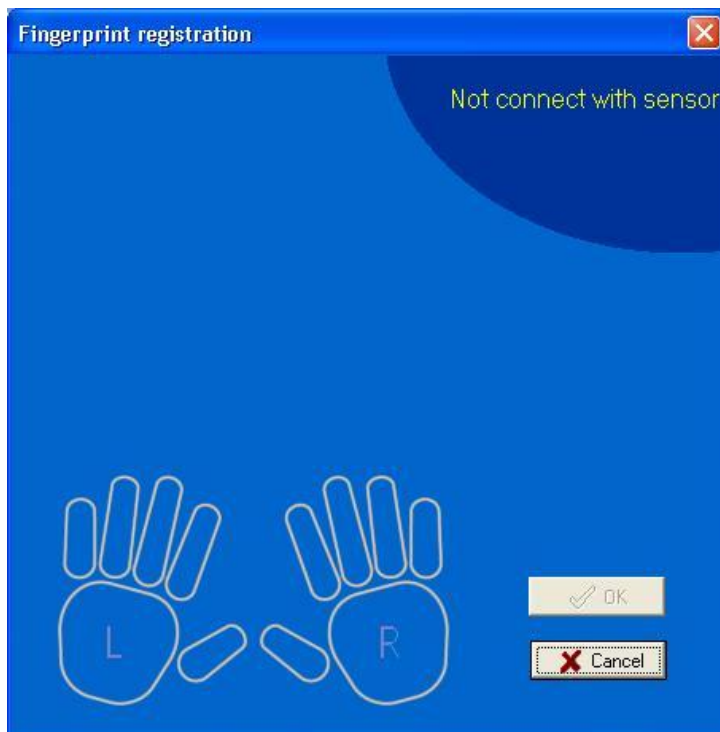
(5) **Photo:** There are two ways to attach photo, one way is directly import photo into the file, and other way is to utilize a camera to seizing image..

(6) **Fingerprint Management**

Fingerprint Sensor Enroll:

To use U.are.U sensor can enroll user's fingerprint under the connecting condition, click shortcut "+" button to add new user in the staff maintenance item, choose utilizing fingerprint sensor to enroll fingerprint after finishing the enrollment process and close enrolling interface, the system will store the user's fingerprint into the local Database, can send the new user's info to the fingerprint machine via **From PC to Fingerprint machine.**

The enrollment interface like as following figure illustration.:



Select the finger which want to be enrolled to enroll; if want to delete this fingerprint, please double click this finger.

Select a user you want cancel, Click shortcut “-” button to delete the user.

Fingerprint Machine Enroll: Use the fingerprint machine to enroll. Select the fingerprint machine on the blank area, Click **Connect Enrollment Equipment** to connect fingerprint machine, after to connect successfully, the **disconnection** will appear, click **Enroll** to begin registering fingerprint.

Enroll Mifare Card: Choose the user who wants to register the Mifare Card, then click **Through Fingerprint Machine to Write Card**, the software will remind **Present Card**, to slide the card near an appropriate place in the fingerprint machine, after to show **Write Card successfully** on the unit, this user's code and the fingerprint will store in the card. Click **Through Fingerprint Machine to Clear Card** to delete user's data in the Mifare, the program remind **Present Card**, to slid the card near an appropriate place in the fingerprint Machine, after to notice **Clear Card successfully** to show the operation well.

Note: this feature is available only to the fingerprint machine which support the Mifare card enrollment

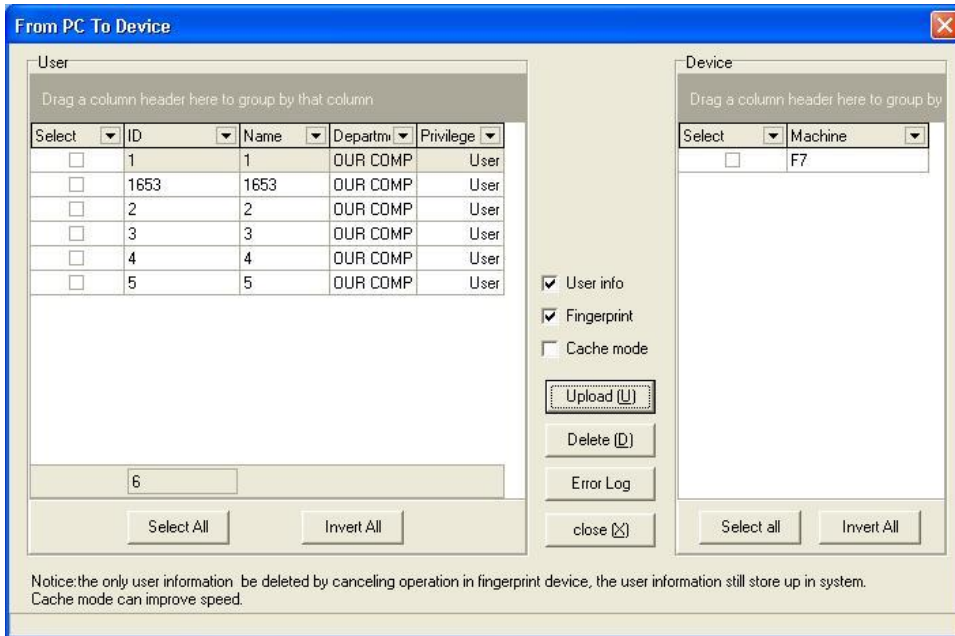
Fingerprint Register Status: to show the detail of user and fingerprint register

Sort Order: can arrange the record according to the ascending or descending order in

the record list, directly click the head of rank to achieve, following figure is the process of sort order which according to the name.

(6) **Transfer User’s Information and Fingerprint**

Form PC to Fingerprint Machine: the user which is store in the database will be uploaded to the fingerprint machine, click **From PC to fingerprint machine**, pop –up the interface to upload user’s fingerprint.



Upload: Based your need, Select a staff and an uploading fingerprint machine, click **Upload**, it is able to upload user’s data to the defined fingerprint machine.

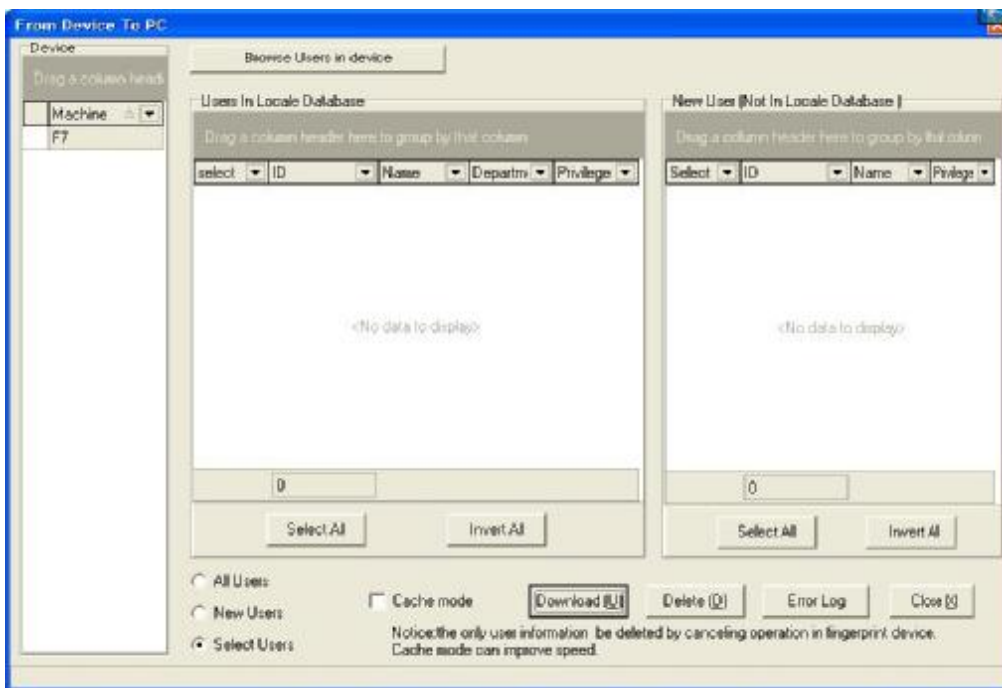
Notice: User’s data include user information and fingerprint.

Delete: If you want to delete a user in a fingerprint machine, first choose user and corresponding fingerprint machine, and then click **Cancel** button.

Operation Log: That is an error log during operating process

Batch: Utilize the funcation to speed up communication when a lot of users are uploaded, it isn’t need to a few user (E.g... 30user)

From Fingerprint machine to PC: The user which is store in the fingerprint machine will be downloaded to the local database, click **From fingerprint machine to PC**, pop –up the interface to download user’s data.



Select a fingerprint machine No. to download user's information which is on the left side list, click **View User in the Fingerprint machine**, it is able to display all user in the fingerprint machine, Select a user to be downloaded, click the **"Download"** button to download the user information and fingerprint from fingerprint machine to local database

View User in the Fingerprint machine: Display all users in the fingerprint machine

Download: Download user data to be selected.

Delete: If you want to delete a user in a fingerprint machine, first choose user, and then click "click" button.

Batch: Utilize the function to speed up communication when a lot of users are Downloaded, it isn't need to a few user

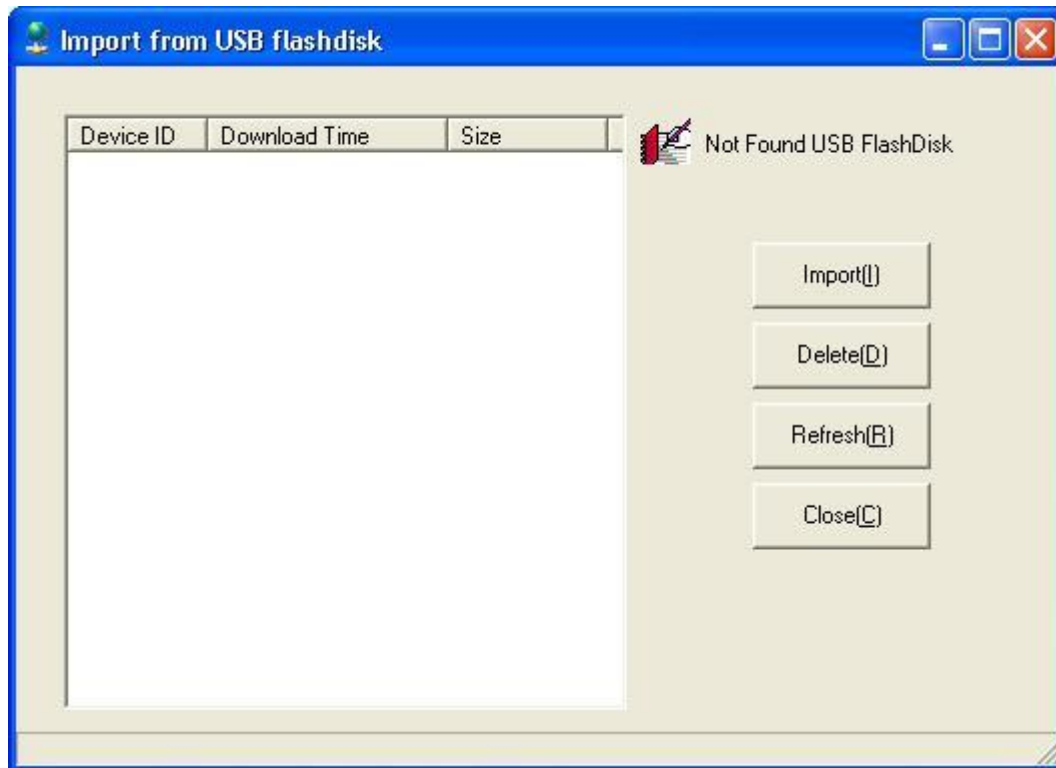
Operation Log: that is a error log during operating process.

Note: while in the process of the user management, if the fingerprint and user will be upload or download, the monitor function should be shut down firstly, if want to upload, the download operation will be priors, the operation must enter user management once again.

2.4.Load from the USB flash disk

Load the attendance data of USB flash disk to the software through this item, like as

following figure:



Load in : On the left side list choose the data you want load in. click **Load in** to load data to system.

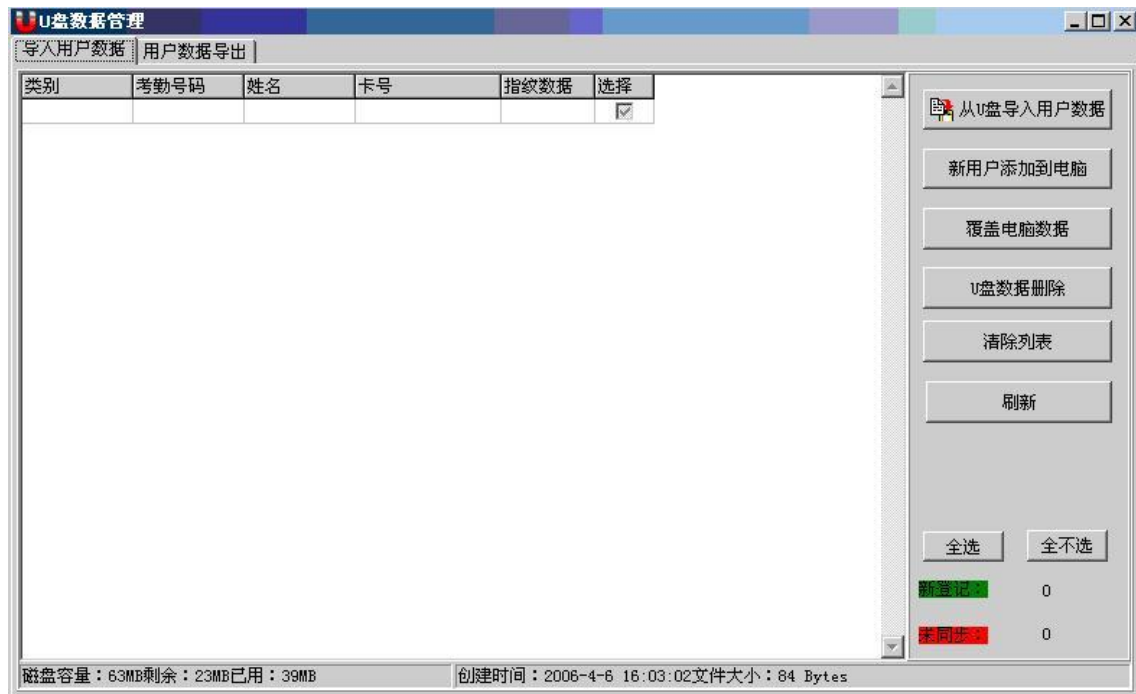
Delete Data: On the left side list choose the data you want delete. Click **Cancel** to delete the data from system

2.5 Management USB Flash Disk

The Option can be used to download the attendance data, and download and upload employee data through USB flash disk. This operation is as following

2.5.1 Load in the User Data

Click **USB Flash Disk Management** in the **Base Setup**, and enter the U flash disk management interface. Like as follow figure.



Click **Load the User Data from the USB disk** button. The system will automatically search the user data and load it into the system from the USB flash disk, if a new use is found, the system will prompt whether add the new user to system or not.

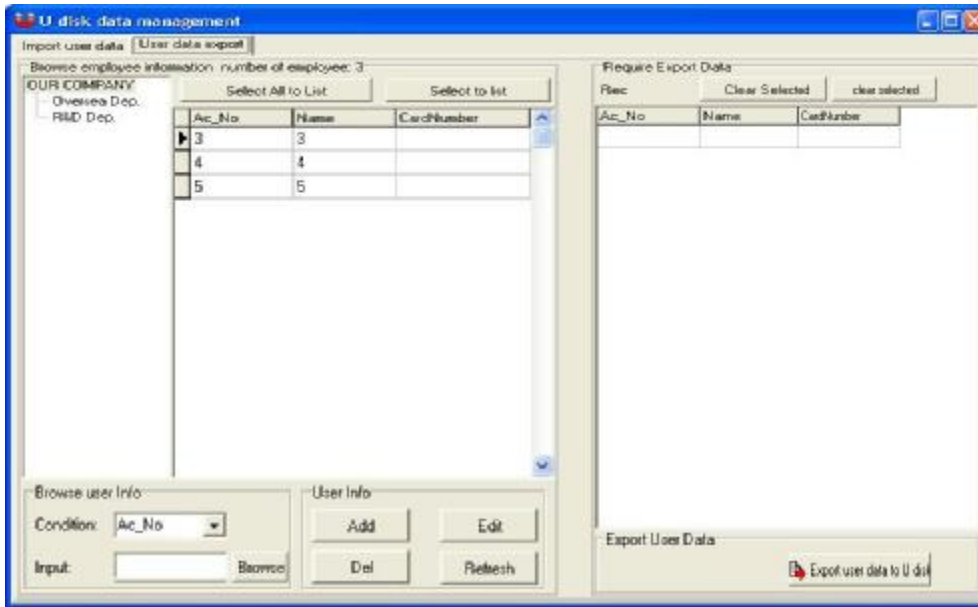
In the list the records with red color show this record do not synchronization with data of software, click override to cover asynchrony data up by the data of computer.

Delete Data of U Flash disk: Delete user data of user data of U flash disk

Clear List: clear list on left side

2.5.2 Export user data

Click label of exporting data, display as follow



Left side is department list. Ability to choose a department from the list, all staff information will be appear on the information list, Double click staff record or selected staff and click **move the selected record to right side** add a staff information in the right side. If there are a lot of staff record, ability to show all staff information of the staff to be queried through staff information query function.

Maintained Staff Information

Add: Add a piece of information of staff.

Modify: modify selected staff's information

Delete: delete selected staff's information.

Click export user data to U flash diskette. Then all record accessories in the ready exporting to U flash to data list will be exported to U flash disk

2.6 System Setup

System Setting of Access control software mainly includes following several parts. First open System Setting, as shown in figure below:

System setup

Automatically monitor

When program starts, activate automatic monitor

Default device polling cycle (second)

Keep the number of device record

Times of reconnection due to failedure

Activate monitor in designated time zone

the start-end of a time priod is divided by subtraction sign,the many time priod is divided by semicolon,E.g "8:00-9:00;11:00-14:00".

Download all log time

many time priod is divided by semicolon ,e.g | 8:00;9:00;14:00".

Synchronize the time for machine

Server

Start Network Server Addr.: Server Port:

company name

Set database connection When start-up Windows, start-up this program

2.6.1 Automatic monitoring

Run automatic monitoring when program start-up

If this option is selected, program start-up will enable automatic rotative monitoring for all connection devices. If this option is not selected, program start-up will not enable rotative monitoring.

Default device rotation periodicity

During device continue rotative monitoring, some fingerprint machines may disconnect temporarily due to various reasons. Here, you can define device rotation periodicity in second (it is recommended to set to 120)

Remain device record

Device record number means user attendance records that are downloaded in every device. You can enter a record number. If actual record number exceeds the pre-set value, the software will clear all fingerprint records stored in fingerprint machine. For example, record number to store is set to 1200, when record number downloaded is 1201, all

fingerprint records in fingerprint machine will be deleted and record number downloaded resets to 0.

Count for continuous failure retries

Count for continuous failure retry (it is recommended to set to 3) that is convenience to reconnect automatically under the condition of fingerprint machine recovers normal connection..

Run monitoring in specified Period time

Here, we can define one time period to run monitoring. If run uninterrupted rotative monitoring, it will bring huge burthen to whole monitoring network. You can define one time period to run monitoring, which will reduce burthen of monitoring network. Please pay attention to time format, such as 06:00-22:00.

Download all record cycle: Set the cycle to download record automatically.

Synchronize time of fingerprint machines: You can define a time to synchronize time of all fingerprint machines that have been added into device. Please pay attention to time format, such as 10:00

2.6.2 Parameter of Server

Select start to connect with network function; it is need to input the IP address and port of linked Server.

2.6.3 Function Configuration

Select the function you want, the three function can be shifted before use the function you have to restart the device.

Unit Name: Enter company name here.

Set database connection: For more detail see **Set Database Connection**,

Run the program when windows start-up If this option is selected, then the program will run automatically every time after PC start-up. If this option is not selected, then this program will not run automatically every time while PC start-up

3. Access Control Setup

Access control setting is to set unlock time and assign privilege for registered users. Settings of each user consist of three period time settings and one group setting. Relationship between period time and period time is "OR". Group also consists of three period time settings and by the same token, relationship between these three period time is "OR".

Simply put, if you want to keep a registered user in unlock status. Firstly the group that this user is in should be defined in unlock combination (one group can be defined in one combination together with other group, but these groups are required to unlock door together). Second, current unlock time is in any availability range of user time period and period time of its group.

Under system default, a new registered user is in Group 1 and group combination is Group 1. So new registered user is in unlock status under default. If a group that user is in is not defined in group unlock combination setting, then the user can only record attendance and cannot unlock door.

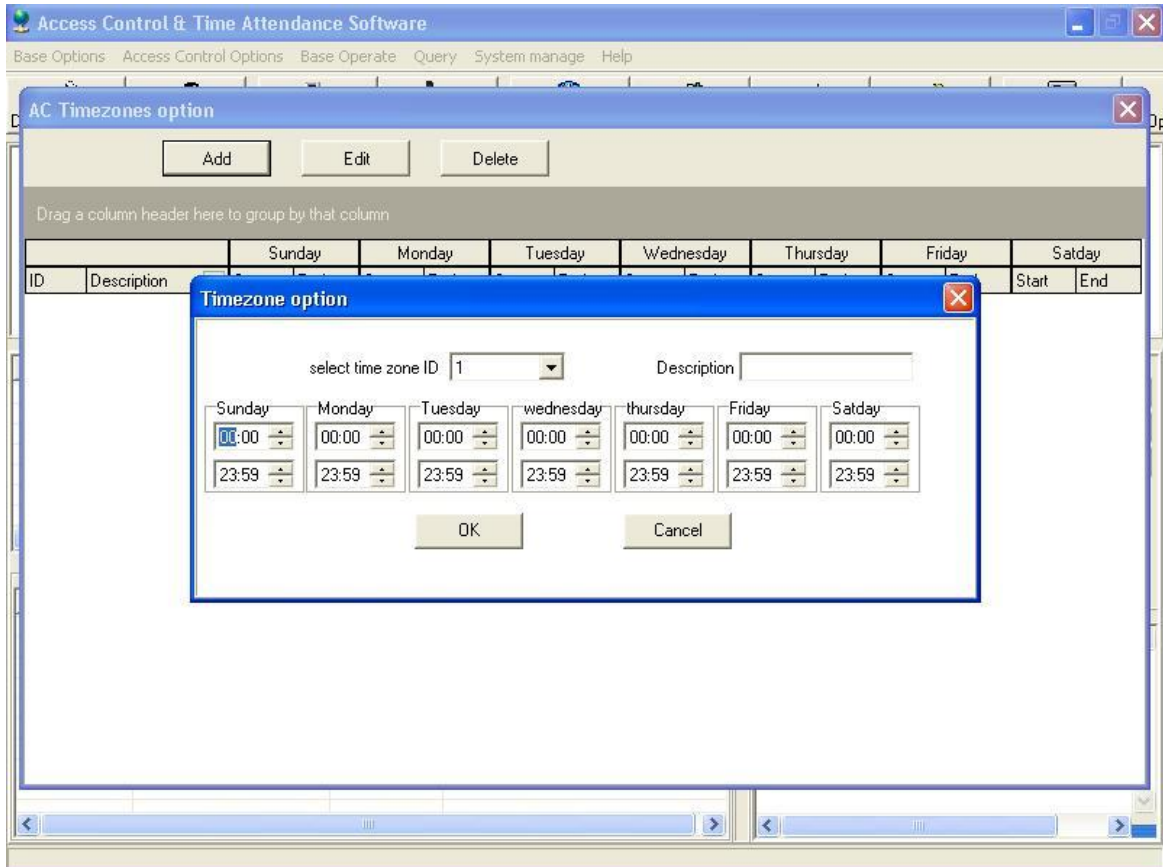
3.1 Period Time

Time period is the smallest time period unit in Access control setting. In whole system, you can define up to 50 time periods. Each time period defines 7 time intervals, i.e. one week. Each time interval is valid time period in 24 hours everyday. Each user can set up to three time periods and the relationship between these three time periods is "Or", which means the user is valid as long as identification time satisfied one of these three time periods. Each time period format of time period is HH:MM-HH:MM, i.e. in term of 24 hours format and precision to second.

End time less than start time (23:57-23:56) means all day forbidden. End time larger than start time (00:00-23:59) means valid in the time interval.

Valid time period for user unlocks: all day open (00:00-23:59) or time period with end time larger than start time.

Click **Time period** from Drag-down menu of **Access Control Setting**, window of adding **Time period** will pop up. Click **Add** button and system will pop up a timetable from Sunday to Saturday. Here, you can define any time period you may use. Then click **Confirm** to save the time period automatically. If you want to use several time periods, continue to click **Add**. In addition, time period can be edited and deleted.

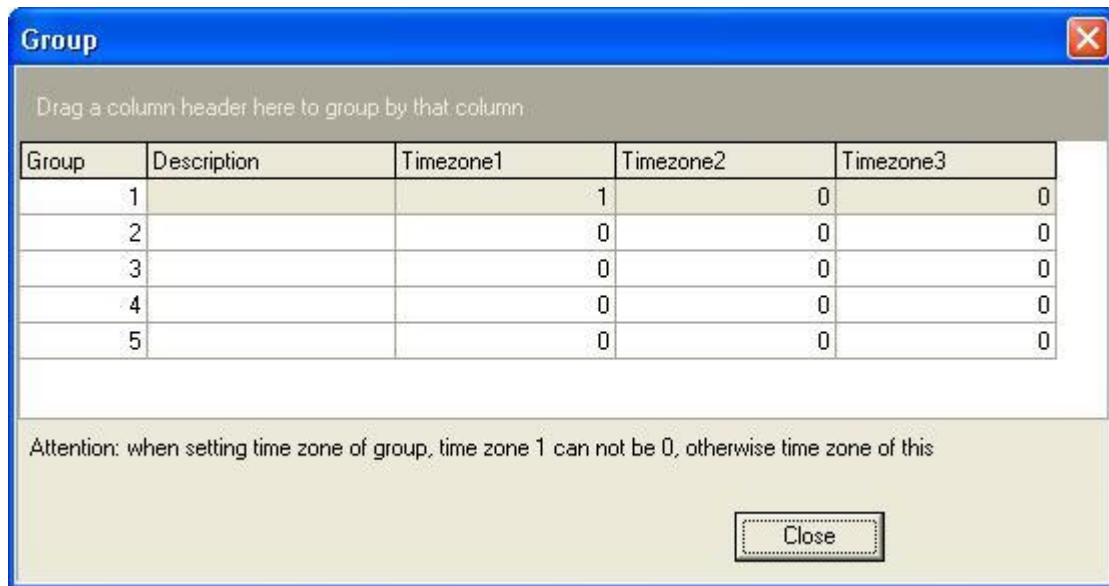


3.2 Group

Group function can divide users into groups and combine different groups to different unlock combinations, which make group management of Access control more convenience. So user can define many unlock combinations. System has defined 5 groups: Group 1, Group 2, Group 3, Group 4, and Group 5. Under system default, new registered user is in Group 1 and can be re-assigned to other group.

Under system default, a new registered user uses time period of Group 1. After the user is re-assigned to other group, the user uses default time period of the corresponding group. So please make sure to define default time periods for each group.

When **Group** is used, you can edit **Group** in **Group Setting** according to group requirements. Like as following figure.

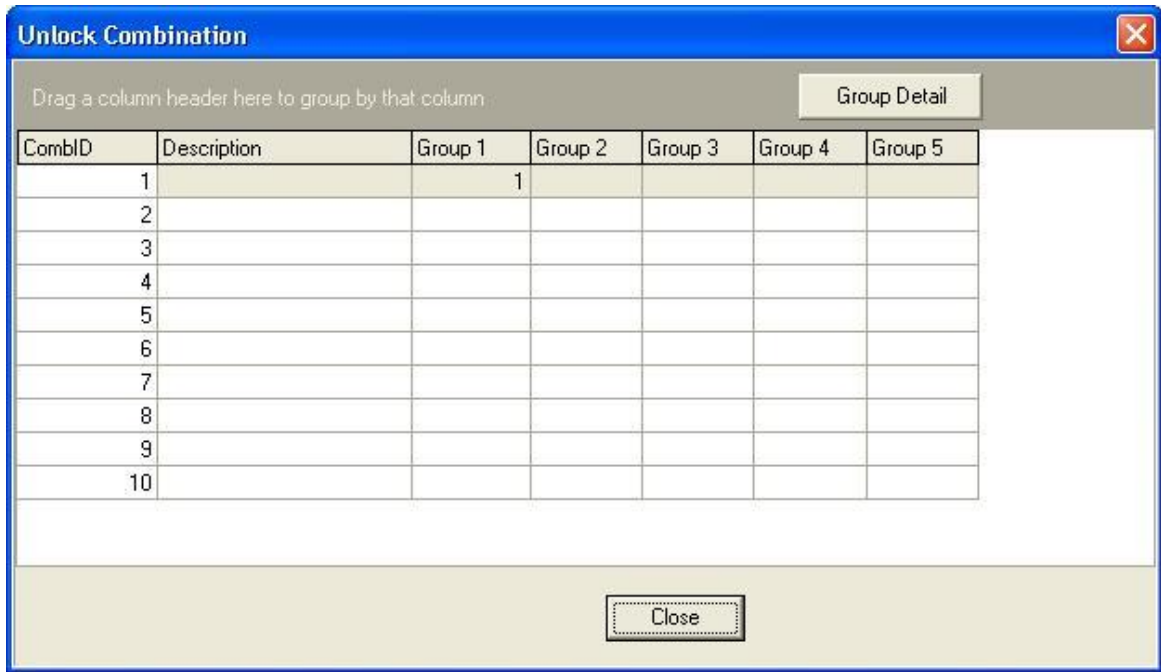


3.3 Unlock Combination

Definition of unlock combination function

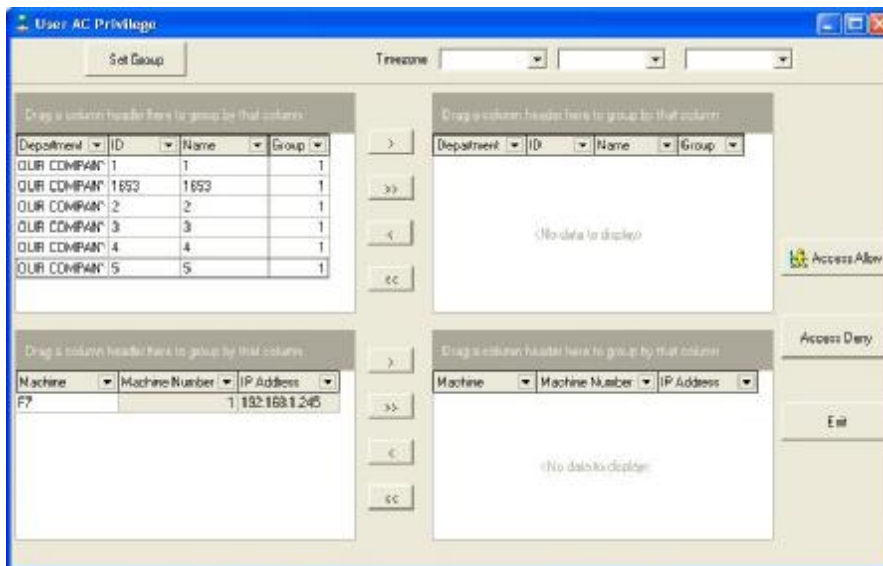
Unlock combination is the direct expression for controlling unlock. For example, if you want that all registered users cannot unlock door, then set Unlock Combination to null.

Definition of unlock combination is defined to different combinations that can unlock door, and each combination consists of different groups. Unlock combination directly uses group number and does not consider order for identifying user between each group. For example, "123" means door will only be unlocked when at least one user in each group of Group 1, Group 2 and Group 3 passes identification together with other two users. "4" means door will be unlocked when one user in Group 4 passes identification together with other two users. System can define up to 10 unlock combinations at the same time and door will be unlocked as long as one of these 10 unlock combinations passes identification.



3.4 User Privileges

User privilege mainly applies to user access control setting: if a user whose personal No. is assigned as 1,2,3,4 is distributed to No. (1) Device in the default period time, likes as follow, add user to right list frist, then add device to right side list. Click **allows passing**.



After assigned the privilege, ability to automatically produce a privilege table, click **exit** to

exit, the following figure will appear

The screenshot shows a window titled "Ac Privilege option" with a sub-tab "Edit Privilege". Below the tab is a header area with the instruction "Drag a column header here to group by that column". The main area contains a table with the following data:

ID	Name	Group	Is Use Group	Timezone 1	Timezone 2	Timezone 3	Door/AC mach
1	1	1	<input checked="" type="checkbox"/>	0	0	0	New Unit
10	10	1	<input checked="" type="checkbox"/>	0	0	0	New Unit
11	11	1	<input checked="" type="checkbox"/>	0	0	0	New Unit
12	12	1	<input checked="" type="checkbox"/>	0	0	0	New Unit
13	13	1	<input checked="" type="checkbox"/>	0	0	0	New Unit
14	14	1	<input checked="" type="checkbox"/>	0	0	0	New Unit
15	15	1	<input checked="" type="checkbox"/>	0	0	0	New Unit
2	2	1	<input checked="" type="checkbox"/>	0	0	0	New Unit
3	3	1	<input checked="" type="checkbox"/>	0	0	0	New Unit

As well as, if have to delete these privilege, separately add the user and the machine to right side list through the similar method , then click **the prohibition to pass**.

After complete assigned the user privilege, next step is to upload **the user access control setup** and **the basic access control setup** to fingerprint machine, exit to the main program interface, may see **upload setup**, must upload the privilege to N machine prior selecting N machine, if want to upload many fingerprint, may hold down Ctrl to select and click **Upload setting** again, a dialog box will pop-up, As counting the need to click confirm to upload Access Control Setup.

Note: when the privilege is assigned to user, because all the group period time of users is defaulted as 1 group, therefore there are two kinds of situations occurring:

1st, user use group time period, designated a user in the left side user list (may hold down the Ctrl key to select), then click **redistribute** the group in the user privilege assign which the group is designated user .

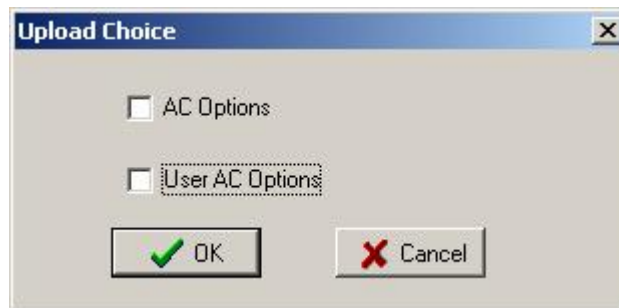
2nd, user does not use the group time period and directly uses the time period, add a user to privilege distribution list in the right side , from three time period option in the top right corner the time period is choused in the user privilege distribution list which can use

4. Base Operation

The base operation fully provide with three sub-module—Upload Setting, Open Door, Starting/Stopping Monitoring.

4.1 Upload Setting

Choose operation device , click **Upload Device**, show as following interface :



Select the Access control setting which you want, the two kind of setting ability to be choused at same time

4.2 Open Door

Click **Open Door** to open the choused door remotely.

4.3 Starting/Stopping Monitoring

The monitoring funcation already run after the program is running, the information about opening door and fingerprint verification will not show on the list

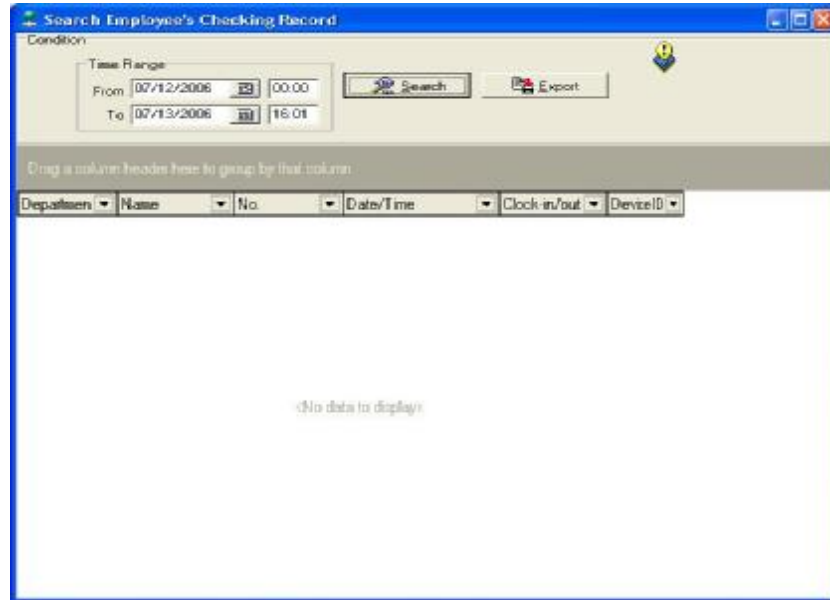
5. Query

These modules include record and alarm record

5.1 Record Query

In **Start/End Date**, you can select time period to query, Click **Query**, list below will show

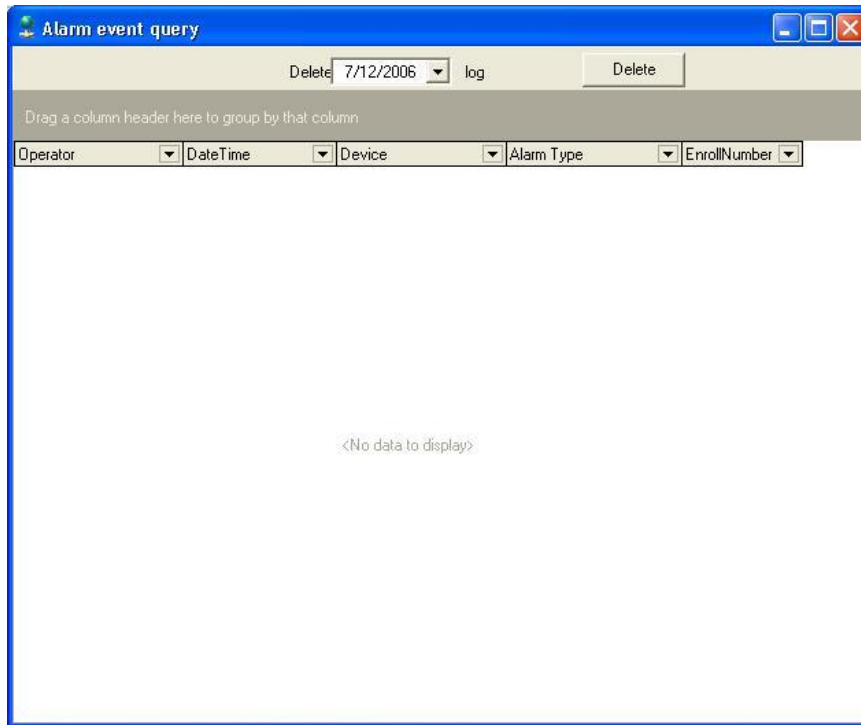
all users' come-in and go-out records within the time period. Each rank in the table has drag-down condition for searching. If you want to do classify Query, you can drag head of rank to table head of query table, show as following.



Click **Output** to output fingerprint records in various formats, such as Excel format, etc. this operation like as user management exporting operation.

5.2 Alarm Record

Click alarm record. The following interface appears.



When the fingerprint identify fail or the Duress fingerprint has been verified the alarm record will produce.

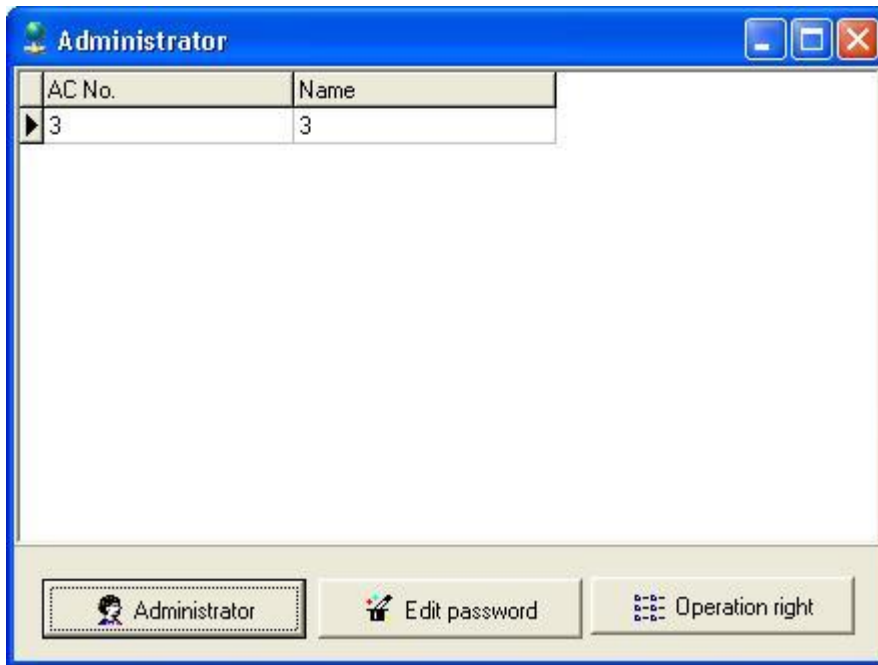
6. System Management

System Management includes that **Operator Management, System Operation Log, Backup Database, Clear old Data, Initialize System and Set Password of Database.**

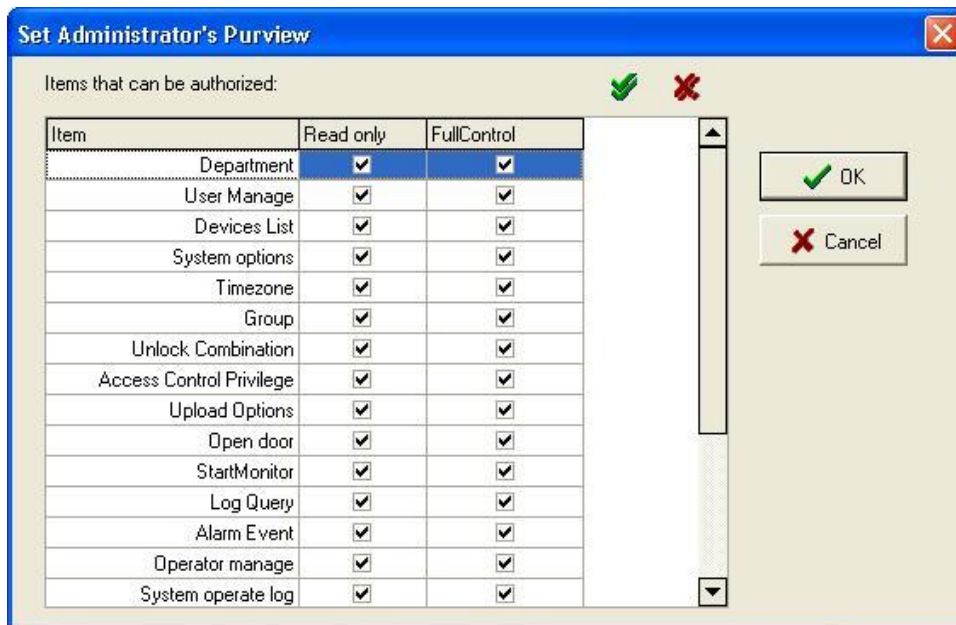
Eight sub-modules

6.1 Operator Management

Click **Operator Management** in the **System Management** menu, Pop-up the main interface of administrators maintained, like as follow.



Click **Administer**, Pop-up the two item of **Add Administer** and **Cancel Administer**, and then pop-up a user list frame, Select a user to be add a administrator, and then click **Confirm** to pop-up a distributing privilege list. Like as following figure.



Put a tick in front of the administrator privilege, and then click **Confirm**.

If want to cancel administrator, click **Administer** firstly, and then click **Cancel Administer** to complete the operation process.

It is able to modify administrator password and operation privilege after an administrator is added

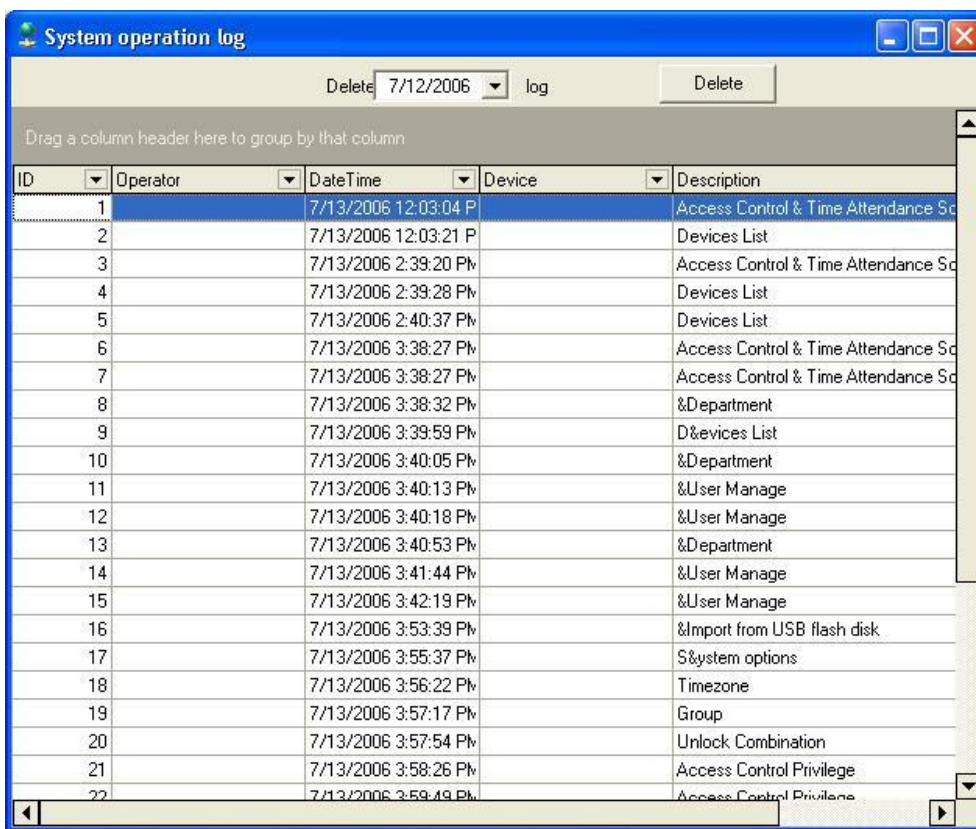
In the administrator interface, Choose an administrator and click modify, then follow the system

prompt to click **privilege** to reset its privilege.

If there is only one administrator in the system, an administrator wants to be canceled, you first find the Database Att2000, and open the list of Userinfo, delete the field Securityflags

6.2 System Operation Log

The system operation Log is a track record which records this software operation history, and utilize list mode to record all operation. Click **Cancel**, this operation is available to delete operation log to the defined previous date, appear following figure.



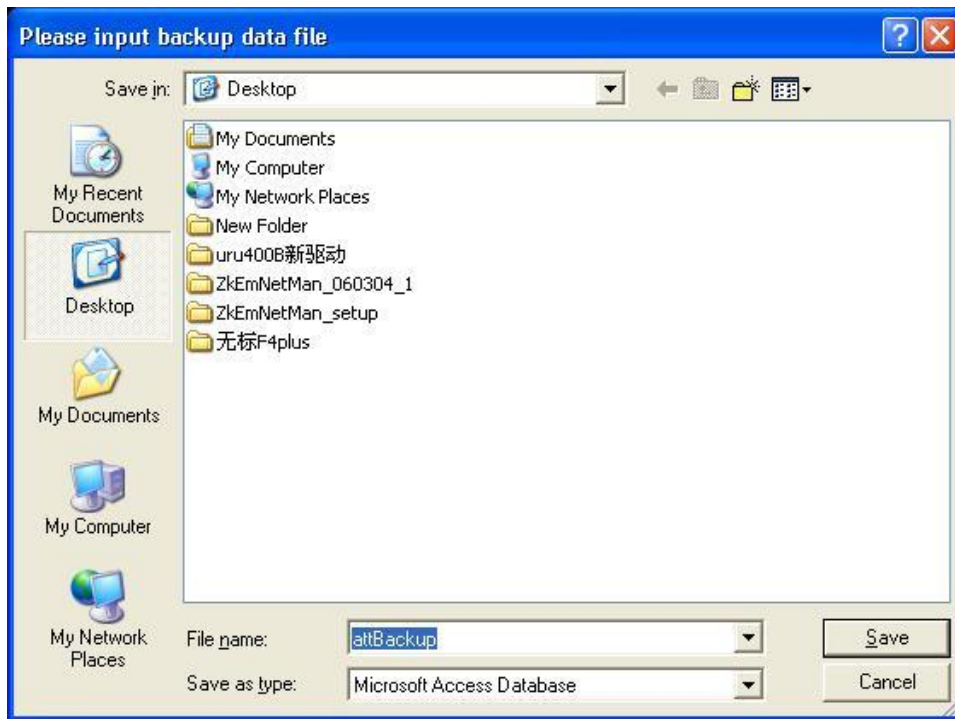
6.3 Data Maintenance

The Data maintenance is, consist up Backup Database, , Compress Database, Clear Old Data, threes module Buildup

6.3.1 Backup Database

Click Backup **Database** in the **System Management** menu, pop-up a dialog-box to

backup database, you can name it as your favor, and save it in the defined location, like as following picture:

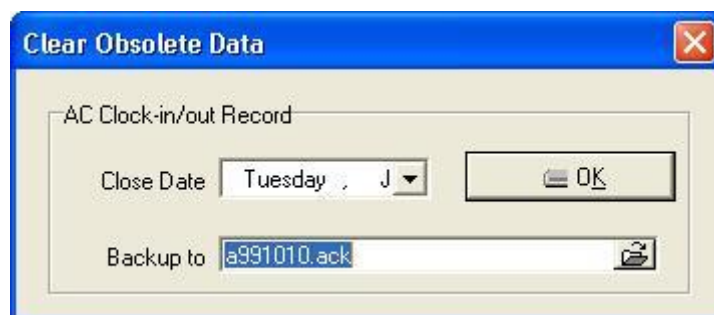


6.3.2 Database Compress

Click **Database Compress** in the **Data Maintenance** menu, to compress database, it is only capable to Access Database.

6.3.3 Clear Old Data

Can use the function to clear old data which are useless to utility, click **Clear Old Data** in the **Data Maintenance** display interface as follow



Click the Menu to choose the date, and than **Confirm** to clear old data at once, then old

record data will backup in the installation directory automatically.

Notice: The delete content doesn't include the ending date be selected. You can choose the operation to backup record data which is before the close data to your folder.

6.4 Initialize System

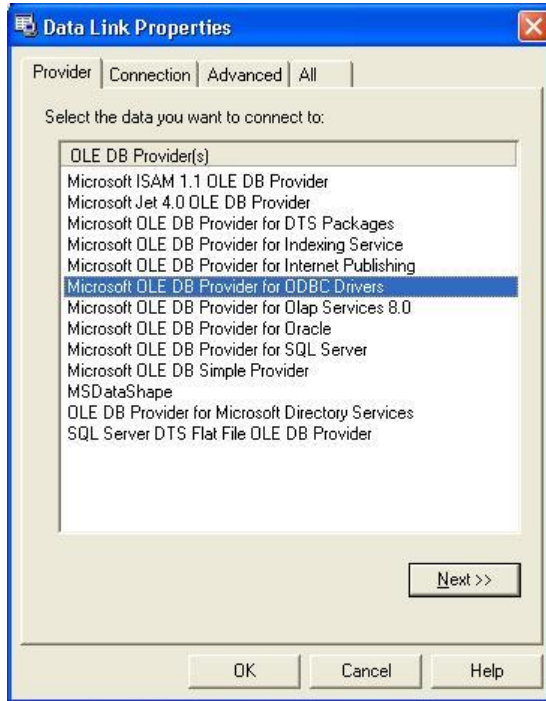
Click **Initialize System** in the **System Management** menu, pop-up a warn dialogs box, like as following figure , executes the command all the system will be initialized, after this operation the all data will be clear.



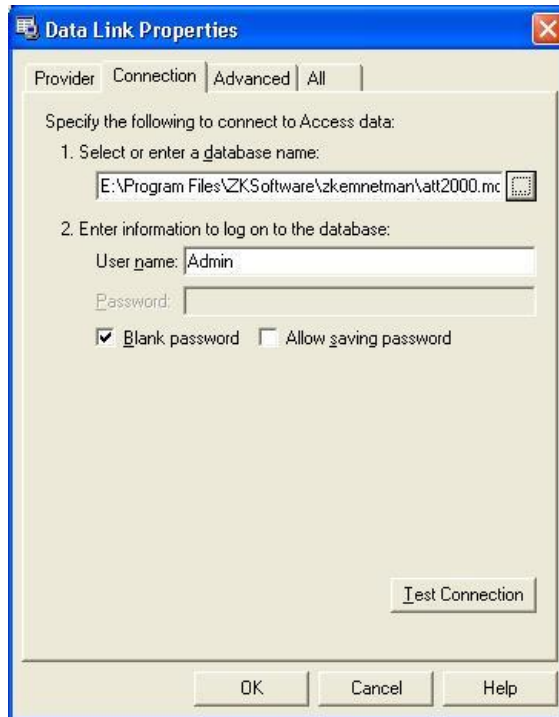
6.5 Set Database


Click **set database**

- 1 . Connecting Microsoft Access Database setup
 - (1) Provide program to select Microsoft Jet 4.0 OLE DB Provider;



(2) Click “Next” or “Connect” enter the following interface.



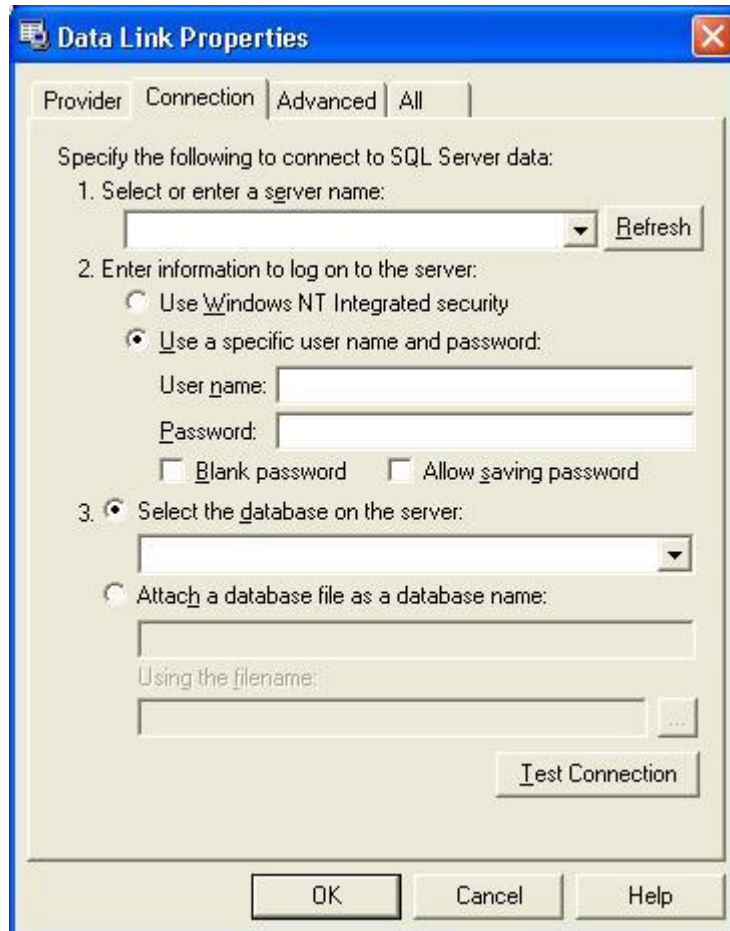
Click  button, Can select the database file, the default name is att200.mdb, according to real condition to renew setup of the database connection.

2 . SQL Server Database Connecting Setup

First you should establish the empty database on the database server. you can find a script file with the name of sqlserver.sql in the directory of instating CD,the empty

database is established in the front of the searcher of SQL Server, and then open the sqlserver.Sql script files, to run database which is to create this software.

In the Provider Select Microsoft OLE DB Provider for SQL Server, click “next” or “connect” to enter this following interface



Confirm the server name for storing this database, information for logging on this serve, and the database name. After run test connection successfully Click (**OK**) button to complete settings

6.6 Set Password of Database

In order to ensure the database security, we may give the database to set a password, when the database is opened needs to input the password to prevent other people destroy the data

Clicks **setup database password** in the system administration menu, inputs your password to press the confirmation, please keep firmly in mind the password which you set. Has to revise this password, enter the set database password interface to input the new password once more.