

QUICK START GUIDE

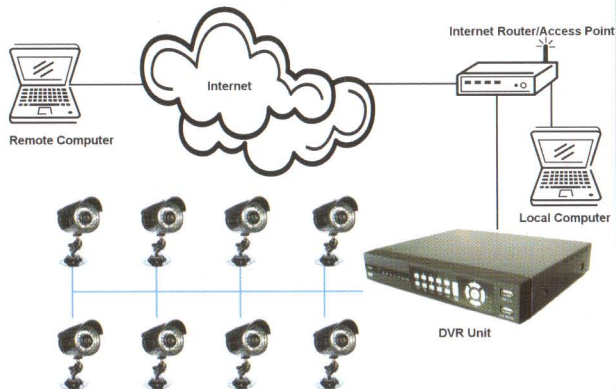
8-CH DVR



V. Frequently Asked Questions (FAQ)

- Q1: What kind of camera should I buy for this DVR?
 A1: Any BNC or RCA interface indoor / outdoor / infrared camera will work with the DVR. The camera can be either color or black & white. Web cameras that require a USB interface are not compatible with the DVR.
- Q2: Why there is no image showing on my Monitor / TV after I turn on the DVR ?
 A2: Check all cameras' input cable and make sure they are secured properly. Also, make sure all the power connectors are tightly connected.
- Q3: Can I remote access and view the DVR through a cell phone?
 A3: Yes, you are able to remote access and view the DVR through a cell phone that has a Window Mobile Pro or Symbian operating system and is connect with 3G network.

III. Simple Network Diagram

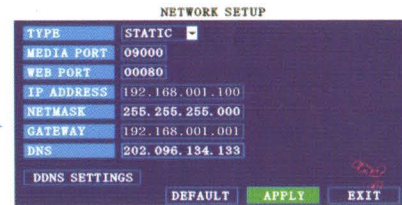


IV. Remote View Setup Instruction:

1

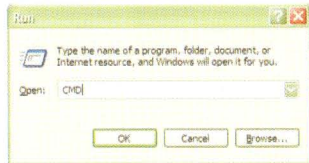


From the DVR Main Menu, Select Network Setup



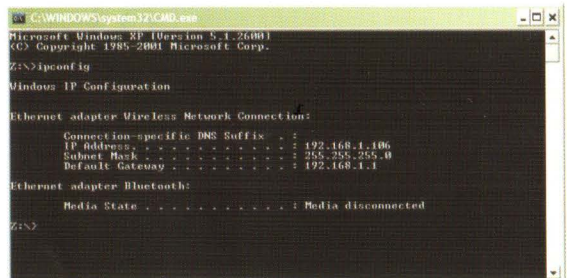
Determine the IP address shown. This is your DVR's IP address. Make a note of this.

2



Using a PC that is connected to the same Router / Access Point as the DVR unit, bring up a Command Prompt by clicking the Start Button - Run. In the Run window, Type in CMD and click OK.

3



In the Command Prompt window, type in the following command:
 ipconfig
 A list of numbers are generated. Identify where the Default Gateway is and note the IP Address (i.e. 192.168.1.1). This is your **ROUTER/ ACCESS POINT IP ADDRESS**.
 *(The above illustration is only an example.)

4

Application	Start	End	Protocol	IP Address	Enable
DVR1	80	to 80	Both	192.168.1.100	<input checked="" type="checkbox"/>
		to	Both	192.168.1.	<input type="checkbox"/>

Port Range Forwarding: Certain applications may require to open specific ports in order for it to function correctly. Examples of these applications include servers and certain online games. When a request for a certain port comes in from the Internet, the router will route

Open up Internet Explorer and access the Router Setup Page by using the IP address you have discovered on Step 3.

Refer to the User's Manual of your Router/Access Point and access the Router Setup Page.

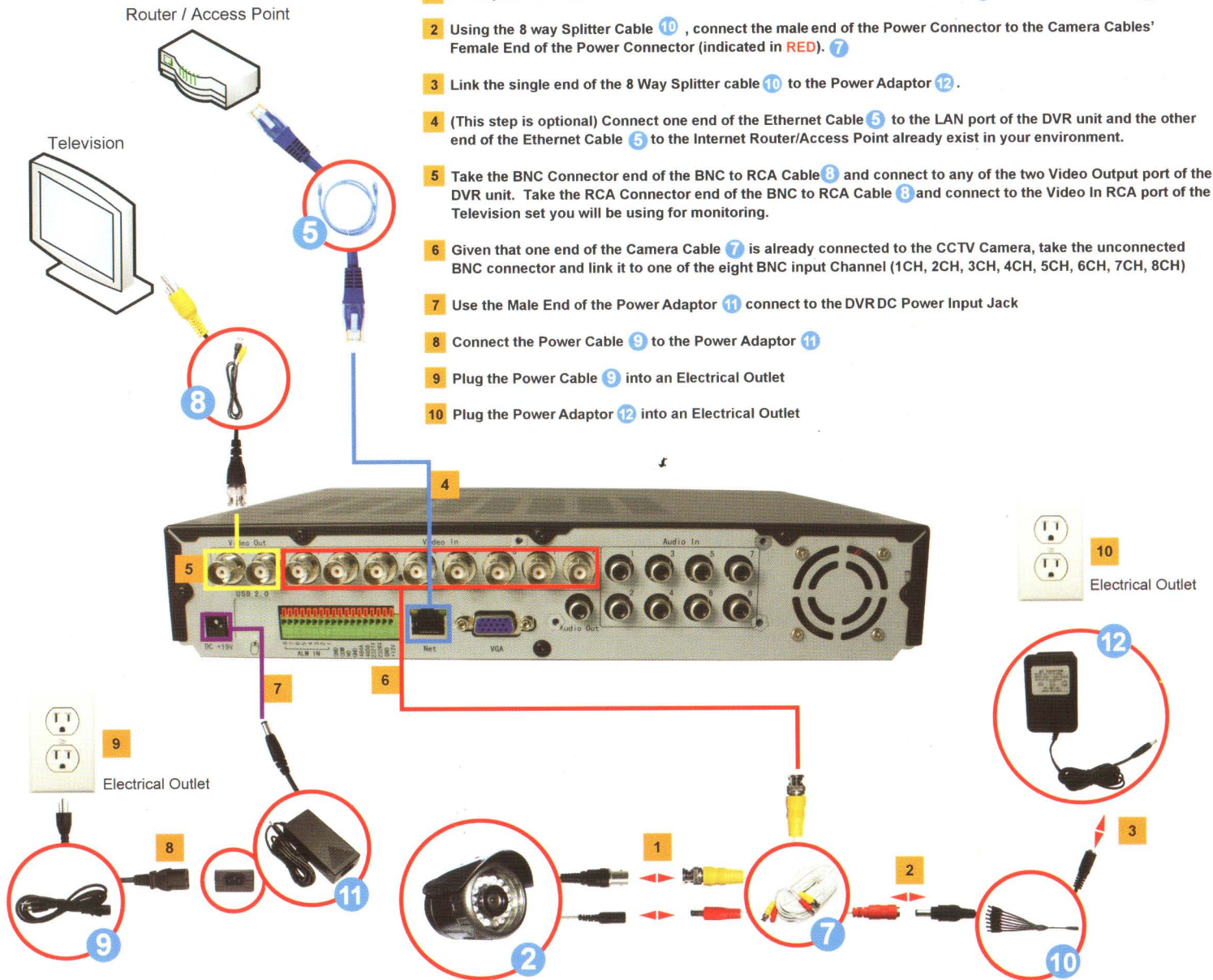
Once you gain access to the Router Setup Page, navigate to the section which allows you to configure port forwarding. You must forward port 80 to the IP address of your DVR unit.

QUICK START GUIDE

II. Setup

Instruction:

- 1 Link up the BNC Connector and the Power Connector of the CCTV Camera(s) 2 with Camera Cables 7 .
- 2 Using the 8 way Splitter Cable 10 , connect the male end of the Power Connector to the Camera Cables' Female End of the Power Connector (indicated in RED). 7
- 3 Link the single end of the 8 Way Splitter cable 10 to the Power Adaptor 12 .
- 4 (This step is optional) Connect one end of the Ethernet Cable 5 to the LAN port of the DVR unit and the other end of the Ethernet Cable 5 to the Internet Router/Access Point already exist in your environment.
- 5 Take the BNC Connector end of the BNC to RCA Cable 8 and connect to any of the two Video Output port of the DVR unit. Take the RCA Connector end of the BNC to RCA Cable 8 and connect to the Video In RCA port of the Television set you will be using for monitoring.
- 6 Given that one end of the Camera Cable 7 is already connected to the CCTV Camera, take the unconnected BNC connector and link it to one of the eight BNC input Channel (1CH, 2CH, 3CH, 4CH, 5CH, 6CH, 7CH, 8CH)
- 7 Use the Male End of the Power Adaptor 11 connect to the DVRDC Power Input Jack
- 8 Connect the Power Cable 9 to the Power Adaptor 11
- 9 Plug the Power Cable 9 into an Electrical Outlet
- 10 Plug the Power Adaptor 12 into an Electrical Outlet



I. Package Content

- 1 DVR Unit
- 2 Remote control
- 3 Power Cable
- 4 Power Supply
- 5 Software CD