

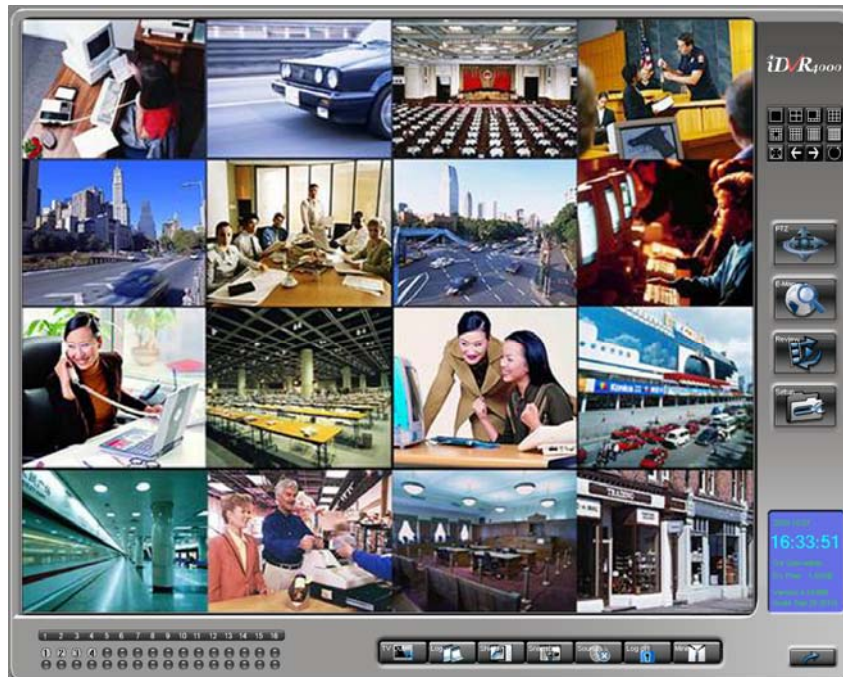
MODEL 816W7 iDVR

Digital Video Surveillance System

User Guide

ID : admin PW : empty

PORT : 80, 5060, 5061, 5062.



Features (H.264 Hardware Compression)

• Operating Systems Windows XP/VISTA/WIN7, H.264

- HD Display Resolution 1024 x 768,1280 x 1024,1440 x 900 ;

Record Resolution 352 x 288 (PAL standard), 352 x 240 (NTSC standard), 640 x 480 (D1) .

• The system Maximum support 32 channel.

- Support single-screen, 4 screen, 8 screen, 9 screen, 10 screen, 12 screen, 16 screen, 20 screen, 25 screen, 36 screen ,Support to display full-screen, support for auto-flip, can be multi-stage amplification.
- Real-time multi-screen display / Record / Playback function, support multiple PTZ control.
- Continuous video, timing video, dynamic video, event video, alarm video , and so on.
- NTSC / PAL video display standard two options, 25 / s real-time preview, near real-time playback.
- Regulatory function of video attributes to make the image more clearly.
- Video multi-level image quality adjustable to change the storage file size, to facilitate the application of different occasions.
- Mobile alarm video recording, video alarm sensitivity, pre-video time, adjustable delay time video to support the voices of alarm output.
- Intelligent search, camera lens can play back all the time (year / month / day / time period or long period of time for retrieval), automatic alarm video search can distinguish video events.
- Single / multi-screen playback at the same time.
- Local amplification , playback with frame-by-frame, fast playback, slow playback , the conventional player.
- Image playback can be carried out to capture function, files backup, document editing functions.
- Remote monitoring, remote PTZ control, color, video manual, shield and unshield , restart your computer, such as control.
- Support NO LIMIT HARD DISK STORAGE, MIRROR, RAID.
- Hard disk management can use the hard disk of the largest and the smallest hard disk space set aside to enable the hard disk can be fully justified to use.
- Automatically creates a log file (user logs, system logs, remote control log), easily search for record videos.
- System shutdown can be set from time to time, time to resume function, to ensure high stability of the system.
- Can be set to run automatically start monitoring software, power automatically shut down procedures, calls automatically restart, automatic restoration of the video.
- The System has been rigorously tested, stable and reliable.
- Hardware Compression – Low CPU usage, 32 channel video is displayed REAL TIME.

Hardware configuration requirements

Server : CPU: 1.8G dual-core above, DDR: DDR1G above, Graphic Card: 256MB above , Network Card : 10–100M above, Display Resolution: 1024*768(32Bit) / 1280*1024(32Bit) / 1440*900(32Bit)

Client : CPU: P4 1.7G above, DDR: DDR 256M above, Graphic Card: 64M above, Network Card: 10–100M, Display Resolution: 1024*768(32Bit) / 1280*1024(32Bit) / 1440*900(32Bit)

Technology Parameter

Platform	WINDOWS XP/VISTA/WIN7 Operating system
Video input	Multi-channel PAL / NTSC composite video input
Video output	Support the secondary display device
Audio input	Multi-channel audio input
Audio output	Through the sound card, speakers in real-time playback, real-time sound monitor site
Alarm input	8 / 16 (normally open, normally closed optional) alarm input, expandable to 32-way
Alarm output	8 / 16 (normally open, normally closed optional) alarm output, expandable to 32-way
Communication	Standard RJ-45 Network Interface
Resolution	352*288dpi PAL standard、352*240dpi NTSC standard
Display Mode	Real-time display, single-screen / 4 screen / 6 screen / 8 screen / 9 screen / 10 screen / 12 screen / 16 screen / 20 screen / 25 screen / 36 screen / full-screen display, lock, security function, the screen before and after the switching function
Screen information	The camera name, date, time, video, and alarm status, confidential cover regional
Time Show	Displays the current time, location, X (0-180), Y (0-270) adjustable, stored in the video frame, time display adjustable brightness, adjustable transparency
Lens Name	Shows that the camera name, location, X (0-280), Y (0-270) adjustable video frame

	stored in the camera name display brightness adjustable, adjustable transparency
Shield function	Screen located 128 *64 and 64 * 32 the size of the shielding region, the location X (0-220), Y (0-220) adjustable, stored in the video screen, the screen background color adjustable
Record Mode	Regular video、 manual video、 alarm video、 dynamic video、boot / auto-start video
Record Quality	The quality of each and every way the best, better, in general, poor, worst arbitrary adjustable
Compression	H.264 HARDWARE Compression
Video Media	IDE / SATA hard drive capacity limitation
Search Playback	Retrieved by date time and list of files, multi-screen broadcast at the same time, single-frame playback, fast playback, slow playback, continuous playback on time, single-screen zoom, partial zoom and other functions, save a single picture, remote playback
Backup	Can backup to another hard disk or burn, print image data
PTZ Control	Terminal through the RS-232 to 485 communications, connect the camera to control PTZ decoder to achieve cloud mirror control
Dynamic Perception	Sensing region 99 can be set, 9 adjustable sensitivity, adjustable video duration, to support pre-video feature
Alarm mode	Video loss alarm, alarm signal from the alarm linked to a number of cameras, alarm time continuous video is adjustable linkage alarm output and alarm output can be more than a row at the same time, the output time adjustable
E-map	Automatic pop-up E-map when alarm
Remote network	PSTN、 ISDN、 ADSL、 DDN、 INTENET、 Fiber Optic.
Network functions	Real-time monitoring, remote playback, remote recording, remote control cloud mirror, remote video attribute adjustment
Remote Alarm	Voice prompts, images text prompts
Remote Control	Video remote control, monitoring, PTZ and so on, remote control of the network

	server shutdown or restart
System Protection	Multi-level password management, automatic power shutdown, not the loss of video information, call the restoration of the video starts automatically, and turn off the automatic restart procedure to realize unmanned
Seamless connectivity	Replace video file to use of seamless connectivity to ensure that video is not dropped frames.