

# All-In-One Built in T.I.E(Text Inserting Emulator) DVR

## MODEL : 4KTM3G - T4



### Features

- Economic & powerful H.264 SoC of INTIME adopted
- **Built in T.I.E(Text Inserting Emulator) (T1-1pc , T4-4pcs of Emulator)**
- Internal 4 sensor & 4 control built in
- Internal 4 sensor & 2 control built in
- Six-fold multiplex operation simultaneously
- **IDE & high speed S-ATA built in**
- **- All in one type, USE ATM/POS Application**



Specification				
System	O.S.	Embedded Linux 2.6		
	Multiplex	Sixfold operation – simultaneous record, live, playback, backup, control & remote access		
Video	Format	NTSC or PAL (auto detect)		
	Input	4 BNC or 4 UTP	4 BNC	4 BNC
	Output	1 RCA, 1 VGA, 1 S-VIDEO		
Audio	Input	4 RCA-jack connectors		
	Output	1 RCA-jack connector		
Text Insert	Number of Inserter	None	<b>1EA</b>	<b>4 EA</b>
	Device	None	<b>RS-232C</b>	<b>RJ-45</b>
	ATM Type	None	ATM for Windows OS	ATM for Windows OS
Record	Compression	H.264		
	Frame rate (fps) & Resolution	NTSC-60/720*480, 120/720*240, 240/360*240 PAL-50/720*576, 100/720*288, 200/360*288		
Display	Resolution	1280*1024 SVGA	720*480 VGA	1280*1024 VGA
	Frame rate (fps)	120(NTSC)/100(PAL)	120(NTSC)/100(PAL)	120(NTSC)/100(PAL)
	Digital Zoom	X2, X3, X4, X5		
Playback	Search	Date/time(Calendar), Camera, Sensor, Motion, Video Loss(Event)		
	Operation	Play, Fast Forward(x2~x8), Bankward(x1~x8), Pause, Backup, capture		
Storage	HDD	2 HDD (max, 1TB), S ATA		
	Backup	2 ports for USB 2.0 disk drives		
Alarm	Input	4 contact or TTL/COMS signal, polarity selectable		
	Output	1~4 relay output		
	Triggered by	Sensor input, Video loss & Motion		
Network	Web(http) Protocol	Remote setup, monitoring, & alarm notification & remote software upgrade		
		TCP/IP, HTTP, DHCP, DDNS, FTP		
Control	Local	Keypad, I/R remote controller, USB Mouse		
	Remote	Setup & upload via Windows application software		
Weights & Measures	Dimension	215(W)×280(D)×72(H)mm		
	Weight	2.3 KG (without HDD)		
Power	Source	DC model – 12~24VDC, AC model – 90~264 VAC, 47~63Hz		
	Consumption	20W Max.		

# 5.6 LCD Built-In Type H.264 4ch NW DVR

## MODEL : 4KTM3G-ATM



Front View

### Features

- **H.264 HW AV Codec of SoC(IME 6700)**
- Half-D1, 120Fps Real-time Live/ Recording/ Network Streaming (Triplex support)
- **5.6inch built in LCD Module**
- Front & Rear USB 2.0 port (Mouse / Backup/ Update SW)
- NDMS(Remote Viewer for multi-access)
- **Removable HDD disk Rack**
- Cost effective Model

Rear View



Specification				
System	O.S.	Embedded Linux 2.6		
	Multiplex	Sixfold operation - simultaneous record, live, playback, backup, control & remote access		
Video	Format	NTSC or PAL (auto detect)		
	Input	4 BNC or 4 UTP	4 BNC	4 BNC
	Output	1 RCA, 1 VGA, 1 S-VIDEO		
Audio	Input	4 RCA-jack connectors		
	Output	1 RCA-jack connector		
Record	Compression	H.264		
	Frame rate (fps) & Resolution	NTSC-60/720*480, 120/720*240, 240/360*240 PAL-50/720*576, 100/720*288, 200/360*288		
Display	Resolution	1280*1024 SVGA	720*480 VGA	<b>1280*1024 VGA &amp; 5.6inch LCD display</b>
	Frame rate (fps)	120(NTSC)/100(PAL)	120(NTSC)/100(PAL)	120(NTSC)/100(PAL)
	Digital Zoom	X2, X3, X4, X5		
Playback	Search	Date/time (Calendar), Camera, Sensor, Motion, Video Loss (Event)		
	Operation	Play, Fast Forward(x2~x8), Bankward(x1~x8), Pause, Backup, capture		
Storage	HDD	2 HDD (max, 1TB), SATA	<b>1 HDD-Removable Rack</b>	
	Backup	2 ports for USB 2.0 disk drives		
Alarm	Input	4 contact or TTL/COMS signal, polarity selectable		
	Output	1~4 relay output		
	Triggered by	Sensor input, Video loss & Motion		
Network	Web(http)	Remote setup, monitoring, & alarm notification & remote software upgrade		
	Protocol	TCP/IP, HTTP, DHCP, DDNS, FTP		
Control	Local	Keypad, I/R remote controller, USB Mouse		
	Remote	Setup & upload via Windows application software		
Weights & Measures	Dimension	215(W) x 280(D) x 72(H) mm		300(W) x 215(D) x 115(H) mm
	Weight	2.3 KG (without HDD)	2.3 KG (without HDD)	2.8 KG (without HDD)
Power	Source	DC model - 12~24VDC, AC model - 90~264 VAC, 47~63Hz		
	Consumption	20W Max.		
<b>Supporting ATM Machine</b>		WINCOR, ARGENTA 510, Hyosung, OMRON, Diebold 1064, Diebold 520, OPTIBA 510, NCR 5877		

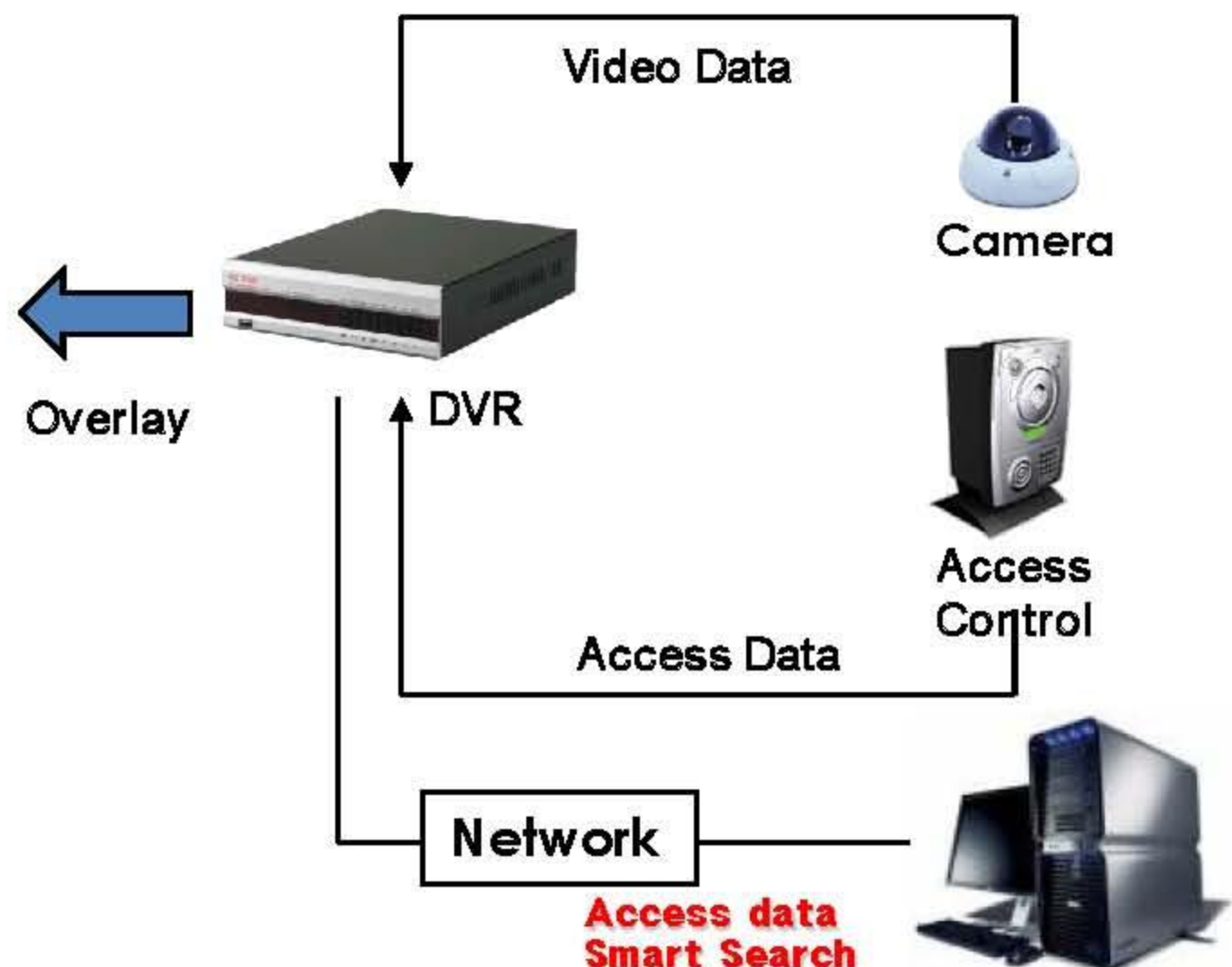
# PURPOSE

The most advanced Features of **all-in-one System** is available for various applications such as smart search, producing evidence materials and etc. by controlling and applying saved data and image information simultaneously. The system saves various kinds of security information in digital media files by connecting access control equipments, POS and GPS devices, and NDVR with RS 232C.



Display Screen

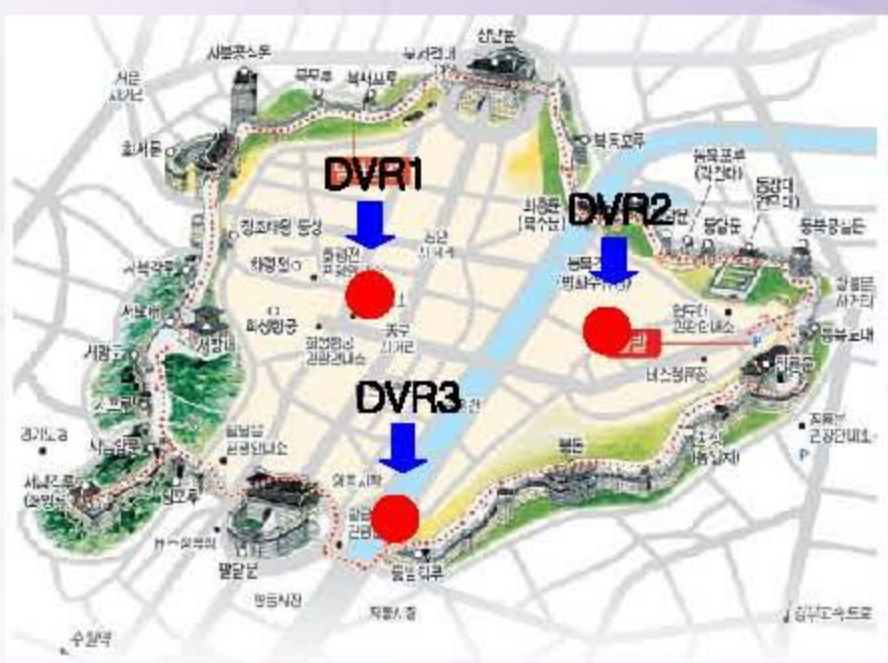
Video + Text Overlay / Search



- Confirmation of access data
- Searching an invader by access data
- Surveillance of entrance
- Connect to diligence and indolence management program

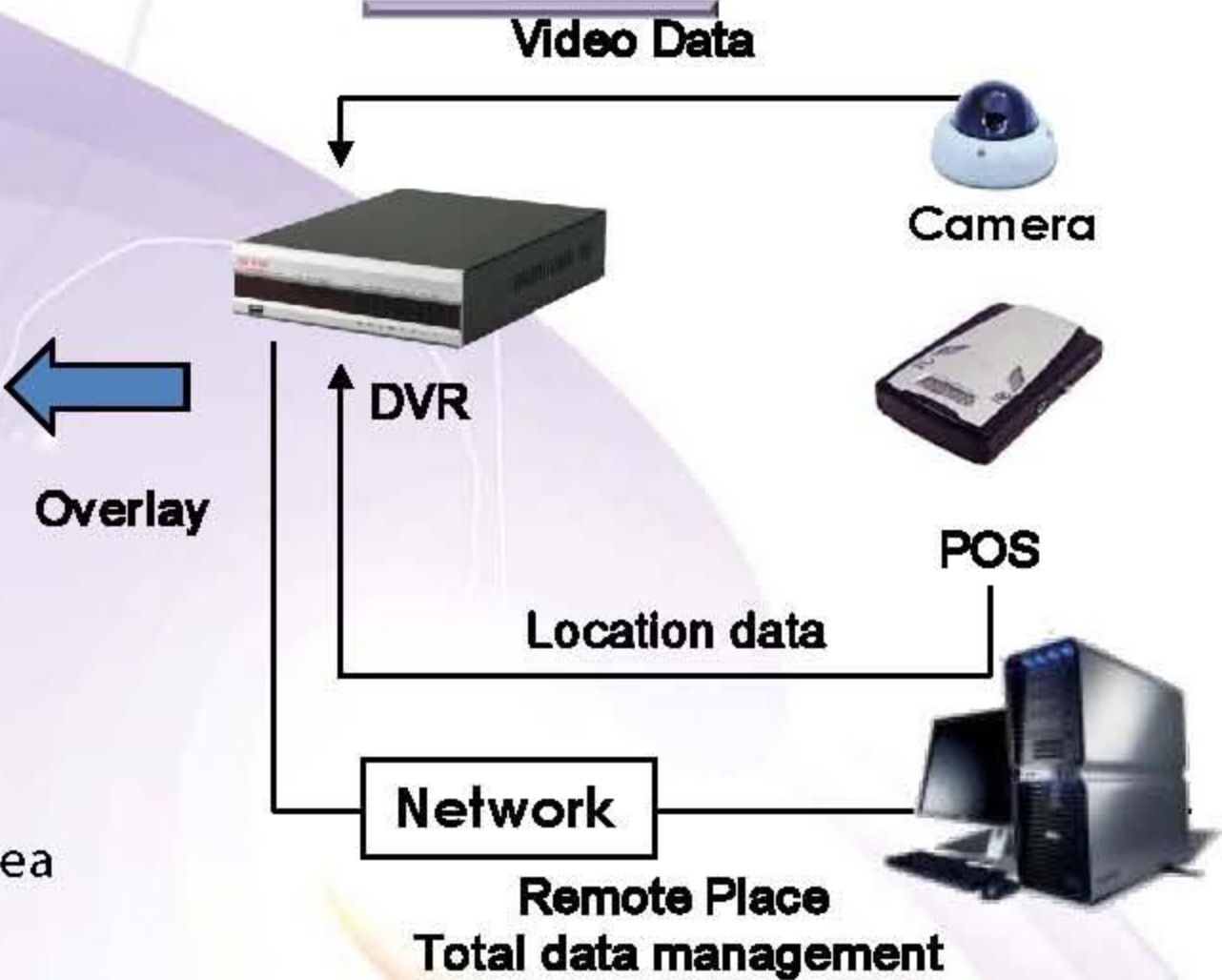
• **GPS DVR Solution** – Receiving GPS position signal in DVR, indication scattered position information of DVR.

E- Map



- ☞ Mobile DVR for Car
- ☞ Total management of Wide area (Interlocking Google earth)

Video + Text Overlay / Search



• **POS DVR Solution** – Camera image is saved to DVR with text information of POS device, Recording/management of Card or transaction information with image

Display Screen



- ☞ Confirmation of Account data
- ☞ Searching user of robbery card
- ☞ Confirmation returned goods data
- ☞ Surveillance of employees
- ☞ It's not need receipt printing

Video + Text Overlay / Search

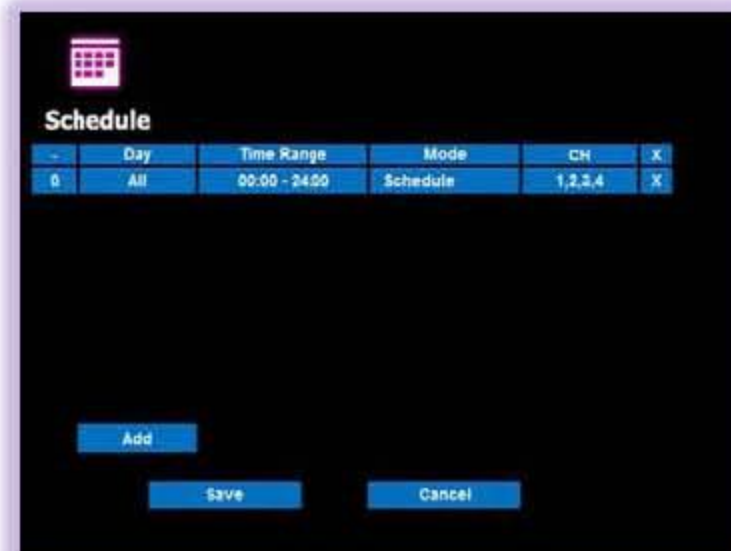


## Hot Keys & OSD



- User Friendly GUI & Hot Function menu bar: Setup, View mode, Playback, Log/Power Off
- OSD Display Icon: Record, Channel, Event, Schedule, HDD status, Date, ID

## Recording



- Standard H.264 codec, Half-D1 resolution support
- Recording configuration is programmable at the Record, Event, Schedule Menu

## Playback



- Search by Calendar / Event
- Multi Functional Playback Menu Bar (FW/Stop/Pause/FF, etc)

## Event



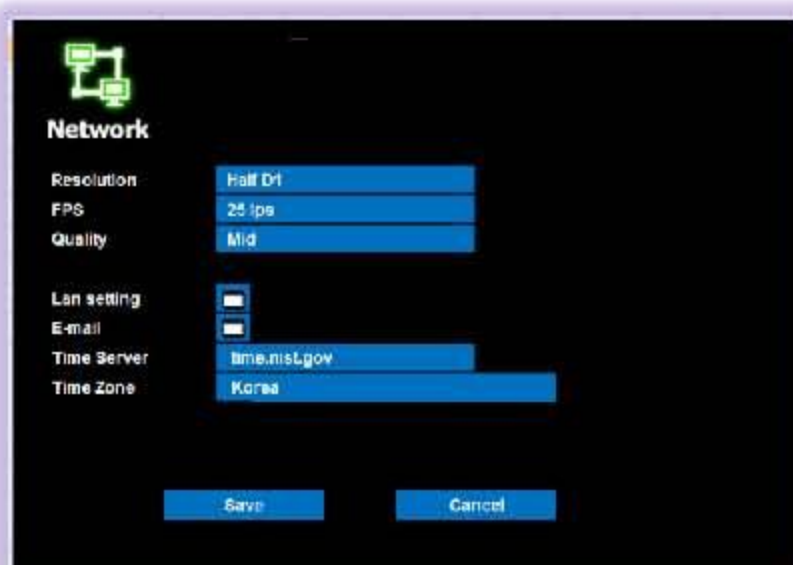
- Sensor / Video loss / Motion detection / Alarm settings
- Motion detection multi-area setup in one camera(drag & drop function by mouse)

## Backup



- Backup via USB ports to external devices (flash memory, HDD, CD/DVD-RW)
- File Player is to watch Backup data at H.264 format or convert to AVI file

## Network



- Network Menu is to configure remote data transfer, LAN, System time/NTP, E-mail notification
- Possible to set up DHCP for dynamic IP automatically or MANUAL for static IP
- DVR must be use after rebooting system if IP address was changed or reset