

## (I) Illustration

The central management system ViewCenter is the latest web A/V monitoring software with super powerful A/V managing ability. And it can instantaneously perform audio/video monitoring through web, support the web listing and searching; play and make web copy; support TCP/Multicast web protocol; and combine central e-map program to operate, etc., to form a complete, professional monitoring center system.

### Functional feature:

- (1) Full Screen, 4 channel Display
- (2) The multi-language and outlook appearance interface that can select English, Chinese Simplified, Chinese Traditional, as well as up to seven different outlook-appearance interfaces. User can switch language and software interface according to actual requirement.
- (3) Can support the multicast operation, able to support up to 5 users to log in to the specific DVR simultaneously.

**Note:** If performing video monitoring task over WAN and the router and exchanging equipment is shut down and thus has restricted the multicase operation, then it will be unable to execute the multicase function in WAN operation.

- (4) Have complete user-managing ability to make multi-tier authorization. Use “**admin**” to be the super administrator with highest authorization tier and can define the control authorization level of GUEST user, plus perfect log managing ability.
- (5) Over the convenient and fast web list querying function, user can play or copy the general recording and alarm recording in the DVR hard drive through the recording list, and query the recording at specific time sect inputted.
- (6) Support web-controlling rotating platform (P/T/Z).
- (7) Support the “**local A/V recording**” and “**photographing**” function (and “**pause photographing**” function). The “**local play**” function includes “**cyclic play**” and “**single-picture-play**” function.

## (II) System requirement and executing environment

### 1. System operating environment:

Chinese Traditional version: Windows 98/2000/ME/XP (Chinese Traditional version) operation system.

English version: Windows 98/2000/ME/XP (English version) operation system

### Hardware requirement (recommend):

- CPU: P42.8 or above.
- Memory: 512MB or above.
- Graphics card: independent 64/128M graphics card.
- Network card: 10/100/1000M.

**2. Web bandwidth requirement:**

To obtain smoother A/V playing effect, the minimum web bandwidth requirement is: 4-channel image-collective control (at least 1M bandwidth)

**3. This software must incorporate with corresponded version of web DVR in operation.**

To obtain better playing effect, we recommend to install DirectX9.0 or above.

**(III) Operating interpretation of Viewcenter:**

**1. Initiate the software:**

Click the “**netdvr**” in the desktop to activate the Viewcenter software, the following dialog block will appear:

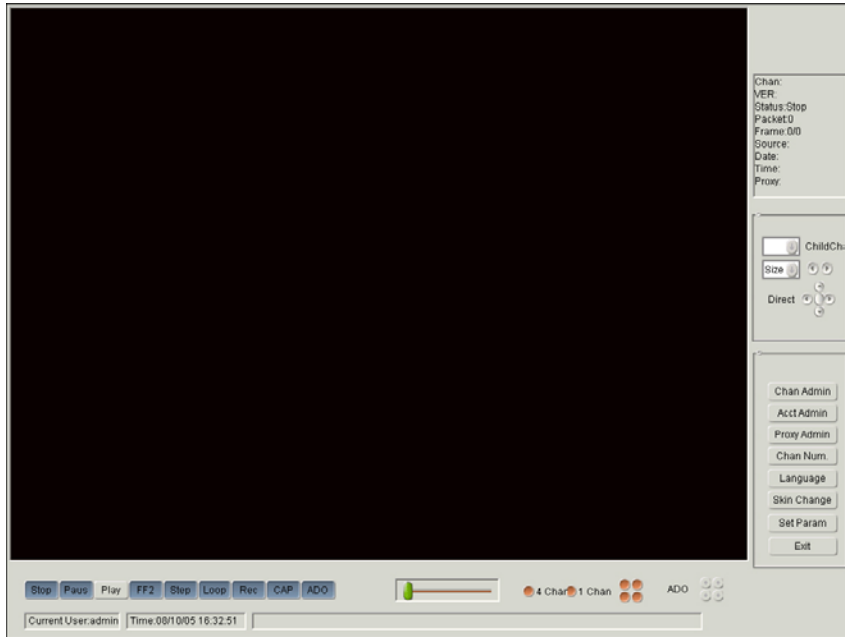


The image shows a standard Windows-style dialog box with a light gray background. At the top, the text "Input username and password" is centered. Below this, there are two labels: "Username" and "Password", each followed by a rectangular text input field. At the bottom of the dialog, there are two buttons: "OK" on the left and "CANCEL" on the right, both with a slightly raised, 3D effect.

This interface is the initiating screen of this software. Input “**username**” (the default is “**admin**”) and “**password**” (the default is by eight “**8**”), and then click “**Confirm**”.

## 2. Viewcenter main function menu:

Enter the main menu, as indicated in the following graphic:



System-setting screen is in English, user can select “**LANGUAGE**” and “**SKIN CHANGE**” options to change language and outlook interfaces according to the actual requirement.

### 1) CHANNEL MANAGEMENT:

After setting up the language and outlook interfaces, user can enter into “**Channel management**” option to add up DVR’s IP address and setting of various controlling parameter, illustrated in the following graphic:

## Central Monitoring System

View the entire field without any losing

The screenshot shows a web-based interface for managing DVRs. On the left, there is a table with columns: Name, IP, proxy, and patr. The first row contains the values: asdfdsa, 192.168.0.12, NONE, and NO. Below the table is a scroll bar. On the right, there is a form with fields for Name, IP, Desc, and Passwd. Below these fields is a radio button labeled 'Default DVR'. At the bottom right, there are buttons for Add, Modify, Delete, Clear, and Exit. At the bottom left, there is a 'Chan Name' field and a 'Default Mode' radio button with 'Monitc' selected.

Name	IP	proxy	patr
asdfdsa	192.168.0.12	NONE	NO

**Note:** The “**Name**”, “**IP**” and “**Password**” displayed in the graphic above are the mandatory items to be filled in. Password inputted here is the encrypted password of hard drive (the default password to clean up the hard drive is by eight “**8**” rather than the administrator’s password).

“**Name**”: the current DVR name defined by user (mandatory item).

“**IP**”: the web IP address of DVR currently added to LAN/WAN/TCP/IP (mandatory item).

“**Brief illustration**”: user’s description to the DVR (optional item).

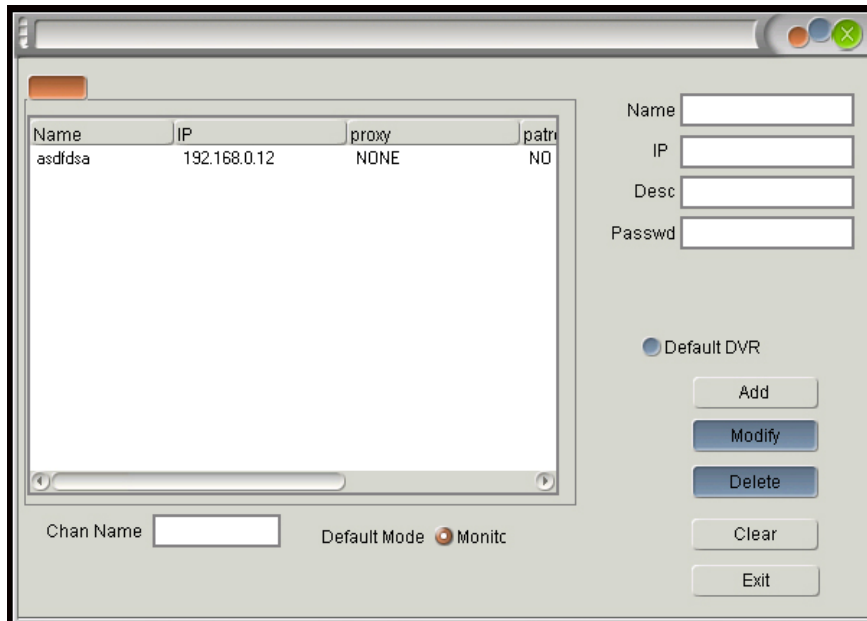
“**Password**”: password to clean up the hard drive, the default is “**88888888**” (mandatory item).

“**Server**”: the premise of setting up this option is to monitor DVR over the agent’s network that provides server service to user. Setting operation relevant to “**Server**” see “**Server**” interpretation (optional item).

“**Attend cyclic play**”: while user has added two or more DVRs in the specific channel and wants to patrol them cyclically, select this option to do so (optional item).

“**Set up DVR**”: user has added one DVR and selects this option, system will directly connect the DVR to display site status in the screen rather than connect it manually (optional item).

“**Add DVR**”: after filling out three mandatory items, if user click “**Add DVR**” option, the status column in the left will indicate the control information of successfully added DVR and relevant setting already, as shown in the following graphic:



**Note:** Indication shown in the left status column is the DVR and setting added. If user wants to add two or more DVRs to be the channel's DVRS, then system setting will connect to the top DVR on the DVR list indicated in the status column while user is in "site" state.

**"Modify DVR":** User applies this option to modify the setting parameter of the added DVRs. The detailed operation procedure is: select the DVR IP under modification in the status column, click "Clear" option, then fill in the data of the modified DVR and click "Modify DVR" to complete the modification.

**"Delete DVR":** select the DVR IP to be deleted in the status column and then click the "Delete DVR" option.

**"Channel name":** user can define the channel name in this column, as displayed in the above graphic.

**"Set up working method":** include the "Site" and "Cyclic-play" options for user to select according to actual requirement.

**"Move to":** in multi-channel management, user can switch any DVR set from one channel to another channel.

## 2) "USER MANAGEMENT"

"User management" function contains the "User management", "Authorization management" and "Log management" options:

**Central Monitoring System**

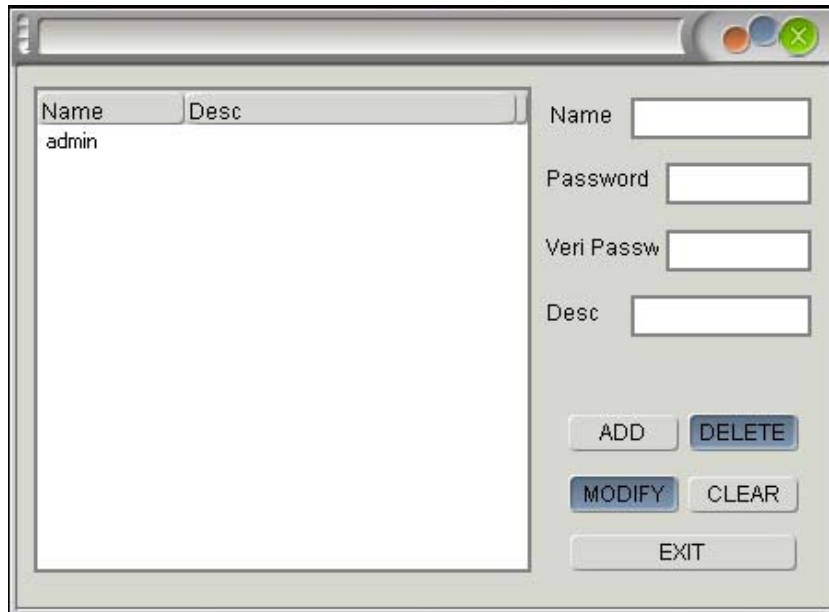
View the entire field without any losing



**“User management”**: user uses it to become the super administrator. This function has the follow features:

- a) Have rights on all system’s all function;
- b) Can build or delete guest user;
- c) Can change user’s own password or change other user’s type.

See the graphic below in illustration:



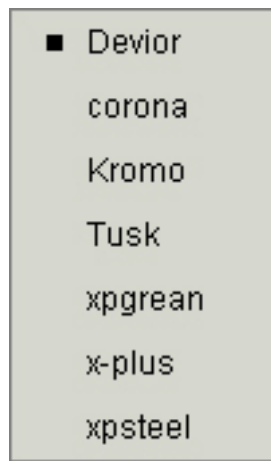
In the graphic above, **“Name”**, **“User password”** and **“Password correction”** columns need to be filled in; **“Brief illustration”** is an optional column. After filling the columns, click **“Add”** option, the status indication column in the left side then will show that the user **“Name”** and **“Brief illustration”** are successfully added already.

3) **“LANGUAGE”**



The Viewcenter software can support three language interfaces. User can select Chinese Simplified, Chinese Traditional or English as the language option. System default language interface is English.

4) **“CHANGE INTERFACE”**



The Viewcenter software can support up to seven colors for alternative options. User can select the topic interface as wish.

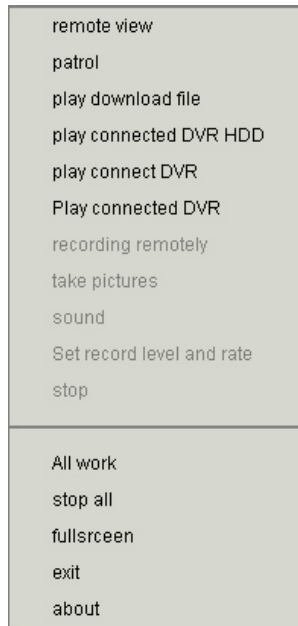
5) **“Exit SYSTEM”** means to withdraw the system controlling program.

### 3. Web connecting operation interpretation of central monitoring system:

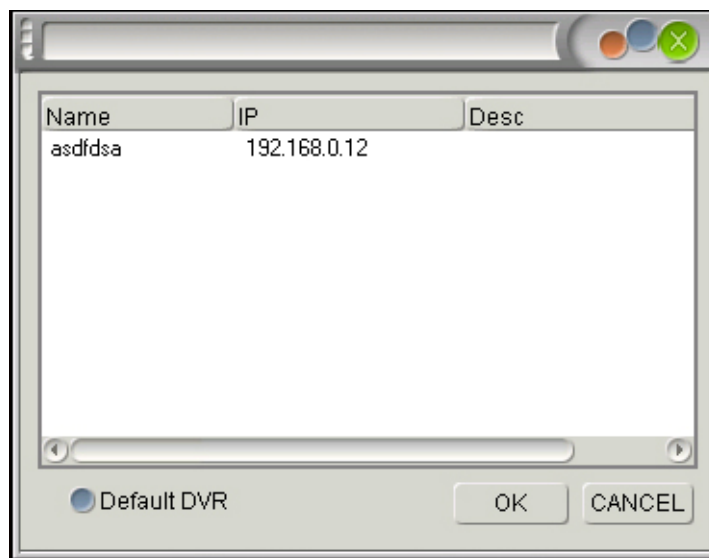
#### system:

When user has completed the setup in the “**Channel management**” option, system then can connect and view site status, make web query and copy operation. The procedure is:

- 1) Move mouse to the window-displayed zone and click the right key, system then will display the option menu as shown in the following graphic:



- (1) “**Site status**”: user clicks the “**Site status**” option and set up parameter in the “**Channel management**” option. There are two ways to connect:
  - (a) If setting up the “**Default DVR**”, system will connect to the IP address directly and display site image.
  - (b) If not performing the “**Set up DVR**” toward the channel DVR, system will display the following graphic to let user connect by manual.

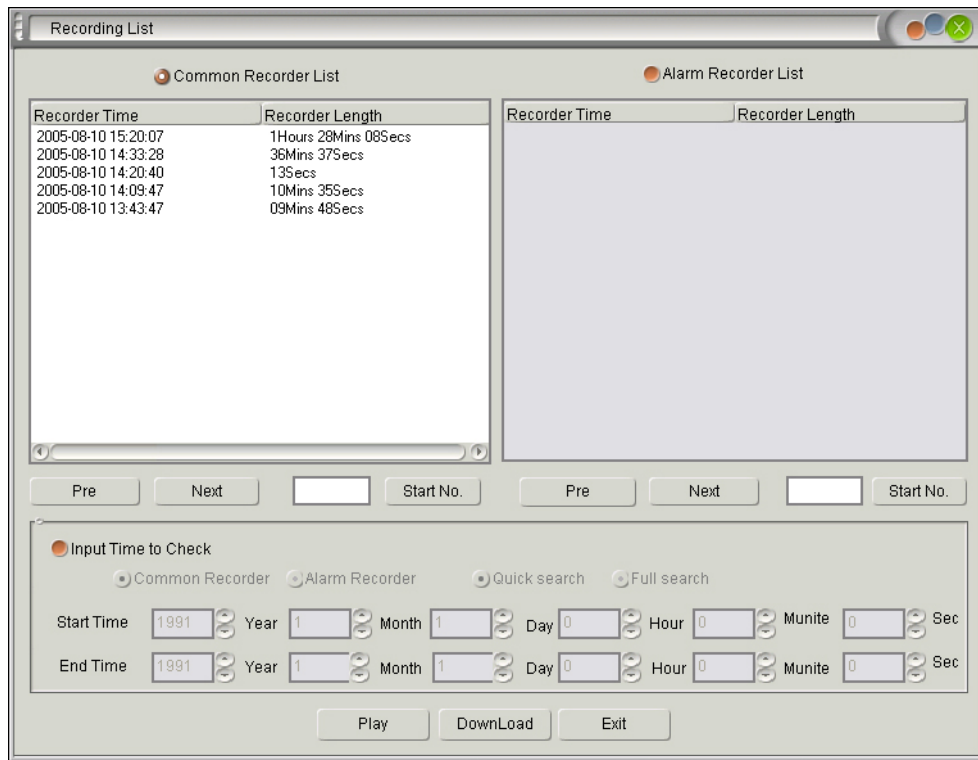


“**Site status**” option can be activated only after connected to the remote DVR. Select “**Site status**” option to complete the remote-site-viewing function. Under site status you can zoom in/out image window, make switch, perform local recording, photograph and control the rotating seat and camera lens, etc.

- (2) “**Play local information**”: it means that system will connect to site through the “**Remote recording**” option in the central monitoring system, or copy site A/V recording file through the network. The site A/V recording file is stored in the RecFiles directory, whereas the copied file through network will be saved in the BakFiles directory.

**Note:** The corresponded file directory work only when user first time runs the “**Remote recording**” option or the coping function in “**Operate DVR information**” option.

- (3) **Operate DVR information:** means user queries the document list of DVR after connecting to remote DVR. That is, to replay or copy the recorded document in the DVR hard drive, as indicated in the graphic below:



In the above graphic, the “**List recording information**” option is the recorded document in the DVR hard drive at client side; user can select specific recording file to play locally or copy to local PC equipment. Besides, user can select certain recording sect and click “**Input queried time**” to query the recording sect at specific time interval.

- (4) Query the connected DVR: (ADSL network connecting application.)
- (5) Remote recording: click “**Recording**” option and begin to record; click “**Stop recording**” to terminate recording. The recorded image file is stored in the RecFiles directory of local hard drive. The denominating rule is: 4r+time.mpg.
- (6) Photograph: Click “**Photograph**” button to take single picture. The denominating rule of picture taken is: time.bmp, stored in the CapFiles directory. User also can use other picture-editing tool to open the pictures stored therein.
- (7) Audio monitoring: click “**Sound**” and user can perform audio monitoring simultaneously corresponding to video monitoring. Click “**Mute**” to cancel the audio monitoring (while in multi-channel collective control case, user can only perform audio monitoring toward one channel, otherwise it will cause overdub).
- (8) “**Stop**”: click “**Stop**” and user will cancel VF-monitoring screen on the current channel.
- (9) “**Activate all**”: this option corresponds to multi-channel collective control case. For example, when user selects four channels or multi-channel collective control case, and set up the DVR IP and parameters toward the four channels, if user click the “**Activate all**” option, system will connect the “**Default DVR**” of each of the channels and displays site images.
- (10) “**Stop all**”: this option corresponds to the “**Activate all**” option. That is, user cancels monitoring to all channels’ site images.
- (11) “**Full screen of multi-windows**”: after clicking the “**Full screen of multi- windows**” option, the current window will be full-screen displayed.  
**Note:** System has two options to enlarge to full-screen display. One is to click twice on one of the image windows directly; the other way is to select the “**Full screen of multi-windows**” option in the control menu. And when under the “**Full screen of multi-windows**” option, click certain channel’s window and will let it display in full screen too. Click once again and will go back to the original window.
- (12) “**Exit system**”: click “**Leave system**” option and will withdraw this system software.
- (13) “**Regarding**”: click “**Regarding**” option and system will display the version information of this controlling program.

2) **While operating site status, playing local hard-drive information or operating DVR hard drive information, user can incorporate with the following function keys.**

## Central Monitoring System

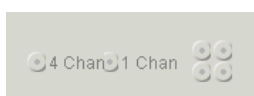
View the entire field without any losing



- (1) **“Stop”**: click **“Stop”** option to cancel the monitoring to the image window of current channel.
- (2) **“Pause”**: While proceeding with **“Playing local information”** or **“Operate DVR information”**, if user selects **“Pause”** to pause playing the recorded image, and click **“Play”** to resume.
- (3) **“Play”**: click **“Play”** and system will play the recorded image file in the local PC hard drive. You can enlarge, record, photograph the image being played, or perform the fast play, pause and single-picture-play options.
- (4) **“Fast play 2”**: click fast play option to fast play the recorded image. System can fast play in three stages: two-time fast play, four-time fast play and picture-jump fast play.
- (5) **“Single picture”**: click this option to perform single-picture recording under play or pause status.
- (6) **“Cyclic-play”**: While playing any sect of local image recorded, click this button and system will cyclically play the specific recording information in the current channel.
- (7) **“Record”**: While under site status or replay the web list, click **“Record”** and system will start recording; and click **“Stop recording”** and system will terminate the local recording task. The recorded image file will be stored in the RecFiles directory of local hard drive. The denominating rule is: 4r+time.mpg.
- (8) **“Photograph”**: While checking site, listing web list or making local play, click **“Photograph”** and system will photograph single picture. The picture’s resolution taken is 720X240, or 352X288 (support **“Pause”** to photograph).
- (9) **“Sound”**: This function key is identical to the **“Audio monitoring”** option.

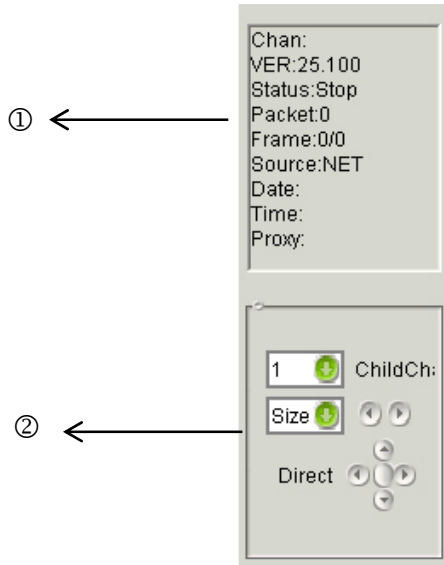
**Note:**

- a) **“Schedule bar”** function is applied only on the operation of playing local recording. User can apply the schedule bar to make fast forward or fast backward movement arbitrarily by using mouse to drag the bar forward or backward.



- b) The 4-channel and 1-channel functions are applied to the FVR-81/91/94 series of products, which is different to the channel amount selection in the **“Channel amount”** option.

**3) Network controlled P/T/Z rotating seat (shown in the following graphic):**



(1) Means to display the status information of the channel currently selected.

(2) Control of network rotating seat:

- a) Select the sub-channel according to the dip setup in the decoder, that is, control the specific loop of rotating seat to select the corresponded sub-channel (consistent to the control of DVR rotating seat)
- b) After the sub-channel is selected, user then can select the “**Change scale**”, “**Change focus**”, “**Lens**”, “**Rain brush**”, “**Lighting**” and direction controlling options to control the rotating seat.

**Note: The notable items of user controlling the rotating seat through web include:**

1. User needs to ensure that under his monitoring system, the rear-end DVR rotating seat works functionally. If the rear-end DVR doesn't have the ability to control the rotating seat, then the central monitoring system is unable to control the rotating seat either.
2. While user is controlling the rotating seat through network, if the “**Command**” sent is invalid, check and ensure if the “**Rotating seat**” option in the DVR side is reset or not (if the “**Rotating seat**” label in the LCD is disappeared or not). If not, user won't be able to control the rotating seat through network.