

**4CH MPEG-4 50FPS DVR
USER MANUAL
MODEL: 4CN2G**

Super SHARP Micro Processor – 32 Bit RISC Processor

ID: ADMIN

Password: 11 11 11

INDEX

1、 PRODUCT OVERVIEW	3
2、 QUICK INSTALLATION INSTRUCTION	3
3、 HARDWARE OVERVIEW	4
3.0 THE FRONT PANEL	4
3.1 THE REAR PANEL	5
3.2 REMOTE CONTROLLER	6
4、 SYSTEM SETTING INSTRUCTION	6
4.1 QUICK INSTALLATION	6
4.2 DIRECT FAST SETTING	6
4.3 MENU SETUP	7
4.3.1 RECORD SETUP	7
4.3.2 RECORD FRAME RATE	8
4.3.3 VIDEO QUALITY	8
4.3.4 RECORD SCHEDULE	9
4.3.5 SENSOR SETUP	9
4.3.6 HARD MANAGEMENT	10
4.3.7 MISCELLANEOUS SETUP	11
4.3.8 NETWORK SETUP	13
4.3.10 LOAD DEFAULT	15
4.3.11 SEARCH VIDEO	15
5、 TECHNICAL SPECIFICATIONS.....	16

*Before installing and using the unit please read this manual carefully,
Be sure to keep it handy for later reference.

1、 Product Overview

Thank you for purchasing our 4ch stand-alone DVR. Adopting the most advanced DSP tech, they supply an entirely solution of video/audio storage and monitoring. With the network image transmission and PTZ control, they offer a cost-effective imaging solution with minimal installation and maintenance costs

- Compression format : MPEG-4 for local storage and network transmission
- Resolution: Max. 60(50) Field/sec, 720 x 240(288)
- HDD: 1 SATA HDD ,Max 1 TB (No support IDE HDD)
- Support network live view and playback
- Video input: 4ch BNC;
- Video output : BNC, network and VGA (option)
- Audio input: 2CH; Audio output: 1CH
- Support Keyboard and remote control
- Live viewing: Quad or single full screen display
- Recording Mode: manual / Event / Alarm / Motion Detection Schedule
- Playback by schedule and event
- Jumper on board for NTSC/PAL selection
- Embedded operation system enables stable quality and provides a reliable platform

2、 Quick Installation Instruction

2.1 Checking the hardware Inventory

Check the accessories supplied with your DVR as the list below :

Item	Quantity
Digital video recorder	1
DC 12V power adaptor	1
Remote controller	1
CD and user manual	1
Power cable	1

2.2 Basic installation instruction:

- a. Put the DVR on a dry, steady plat
- b. Video input /output at the rear Panel, connect the input of cameras, and the output of Monitors or VGA
- c. Audio input/output at the rear panel, connect the input of audio signal ,and the output of audio record equipment
- d. Attach the power supplier to the unit and connect it to your local power supply

3、 Hardware Overview

Input/Output port: Rear panel(power input, audio/video input and output, VGA output, USB/Ethernet port)、Front Panel(keyboard)、 Remote controller、

3.0 The Front Panel



Pic. 3_1

Table 3-1

No.	Button	Full name	Function
1-4	CH1-CH4	Channel	1ch full screen display
5	QUAD	Quad	Quad display
6	REC	record	Start recording
7	STOP	stop	Stop recording
8	FR	Fast revert/left	1.recording fast revert when playing back. 2.Cursor left moving in system setting
9	FF	Fast play/right	1.recording fast forward when playing back 2. Cursor right moving in system setting
10	PAUSE	pause	Pause play back
11	PLAY	play	Playback

12	IR	IR receiver	Flash when receiving signal from remote controller
13-17	LED	Indicator	
18	MENU	Main Menu	1.Enter main menu 2.Return and save settings
19	UP	Up	Move the cursor up on menu
20	DOWN	down	Move the cursor Down on menu
21	ENTER	enter	Enter the submenu and save new setting

3.1 The Rear Panel

Pic. 3_2

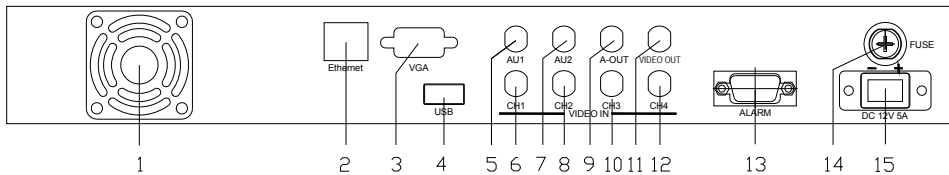
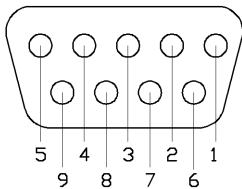


Table 3-2
Instruction:

No.	Button	function	reference
1	FAN	Air fan	
2	Ethernet	RJ-45 port for network connection	
3	VGA	VGA output	option
4	USB	USB 2.0 port	
5、7	AU1、 AU2	Audio input	
9	A-OUT	Audio output	
6、 8、 10、 12	CH1、 CH2 CH3、 CH4	Video input	
11	VIDEO OUT	Video output	
13	ALARM	Alarm Input	refer: pic. 3_3
14	FUSE	insurance	
15	Power	Power in	DC12V

Pic. 3_3 Alarm input



No.	button	reference
1	Alarm input1	N.O. / N.C..
2	Alarm input2	N.O. / N.C..
3	Alarm input3	N.O. / N.C..
4	Alarm input4	N.O. / N.C..
5	Alarm input COM	
6	Relay NO output	
7	Relay NO output common port	
8	485A	PELCO-P/PELCO-D bitrate: 9600
9	485B	

3.2 Remote Controller

The functions of buttons on remote controller are the same as the buttons on the keyboard of DVR

4、 System Setting Instruction

4.1 Quick installation

a. HDD Installation

Cut off the power supply for DVR → remove the cover by using screw tool → fix a HDD in the unit → properly connect the HDD cables

b. PAL/NTSC Standard Selection

Follow the instruction as below to select the standard you need:

find SW1 on main board → jump to NTSC or PAL → close the cover

c. connect the power supply

4.2 Direct Fast Setting :

a. Time Setting

"MENU" → "MISCELLANEOUS SETUP" → "SET TIME"

b. Password Setting

"MENU" → "MISCELLANEOUS SETUP" → " CHANGE PASSWORD "

c. HDD format

"MENU" → "HARD MANAGEMENT" → "HARD MANAGEMENT "



Please make sure of shutting down the power before install or change the HDD



keyboard Lock: Exit menu mode, and then press FR button 5 times.

4.3 Menu setup

Press Menu to enter the main menu setup, as following :

CAMERA SETUP
RECORD SETUP
RECORD FRAMLRATE
VIDEO QUALITY
RECORD SCHEDULE
SENSOR SETUP
HARD MANAGEMENT
MISCELLANEOUS SETUP
NETWORK SETUP
VIDEO BACKUP
LOAD DEFAULT

4.3.0 CAMERA SETUP

a. Enter CAMERA SETUP

"MAIN MENU" → "CAMERA SETUP"

b. Snapshot of CAMERA SETUP

1 » ON	2 ON
CAMERA SETUP	
3 ON	4 ON

c. CAMERA SETUP operation instruction

Function: Set live viewing of each channel on the monitor Press "ENTER" to select ON or OFF; OFF means no display, ON means display

Press "UP"、"DOWN"、to move the Cursor to different channel Press "MENU" to exit save setting and.

4.3.1 RECORD SETUP

a. Enter RECORD SETUP

" MAIN MENU " → "RECORD SETUP "

b. Snapshot of RECORD SETUP

1》 ON	2 ON
RECORD SETUP	
3 ON	4 ON

c. RECORD SETUP operation instruction

Function: Set recording of each channel

Press "ENTER" to select ON or OFF, OFF mean no recording,

ON means recording

Press "UP"、"DOWN"、 to move the Cursor to different channel

Press "MENU" to save the setting exit

4.3.2 RECORD FRAME RATE

a. Enter RECORD FRAME RATE !

" MAIN MENU " → "RECORD FRAME/RATE"

1》 2 FPS	2 1 FPS
TOTAL: 5 FPS	
3 1 FPS	4 1 FPS

b. RECORD FRAMERATE operation instruction

Function: Set record fps of each channel .Totally 50/60frame/sec (PAL/NTSC)

Press "ENTER""STOP" to set the fps value

Press "UP"、"DOWN"、 to move the Cursor to different channel

Press "MENU" to exit and saver the setting and.

4.3.3 VIDEO QUALITY

a. Enter VIDEO QUALITY

" MAIN MENU " → " VIDEO QUALITY "

b. VIDEO QUALITY operation instruction

Function: set the quality of the record; With high level ,you can get better quality picture, Meantime, it takes more capacity of the HDD

Press "ENTER" to set the record level Record

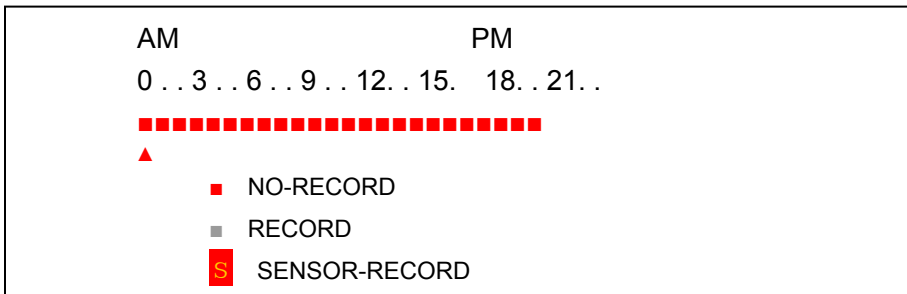
Level: HIGHEST/HIGHER/HIGH/BETTER/NORMAL/LOW/LOWER/

LOWEREST

Press "MENU" to exit and save the new setting

4.3.4 RECORD SCHEDULE

- a. Enter RECORD SCHEDULE
" MAIN MENU " → "RECORD SCHEDULE"
- b. Snapshot of RECORD SCHEDULE



c. RECORD SCHEDULE operation instruction

Function: set the record mode, NO-RECORD/RECORD/ SENSOR-RECORD

Stands for 24 hours in a day

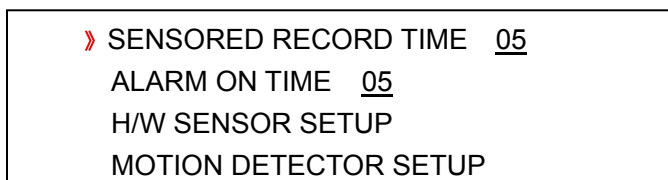
Press "ENTER" to set mode

Press "UP"、"DOWN" to move the cursor

Press "MENU" to exit and save the new setting

4.3.5 SENSOR SETUP

- a. Enter SENSOR SETUP
" MAIN MENU " → "SENSOR SETUP"
- b. Snapshot of SENSOR SETUP



- c. SENSOR SETUP operation instruction:

Function: set the parameter of sensor alarm

SENSORED RECORD TIME: set the record length (seconds),

ALARM ON TIME: set the time length of alarm output

H/W SENSOR SETUP: set the sensor setting and the statement ; NOT INSTALLED /NORMAL-OPEN/ NORMAL-CLOSE

Press "MENU" to exit and save the new setting

MOTION DETECTOR SETUP: Set the area of motion detection

MOTION DETECTOR SETUP		
» CH-1	OFF	AREA
CH-2	OFF	AREA
CH-3	OFF	AREA
CH-4	OFF	AREA

Press "FR/LF", "FF/RT", "UP", "DOWN" to move the Cursor

Select "AREA", press "ENTER" to set the motion detection area.



Press "UP", "DOWN" to move the Cursor

Press "stop" to set the sensitivity of the motion detection

Sensitivity instruction:

" 0 "means cancel the area setting

" 1 "means low level sensitivity

" 2 "means standard level sensitivity

" 3 "means high level sensitivity

Sensitivity Setting:

Press "ENTER" to set the sensitivity of the cursor position

Press "MENU" to exit and save the new setting

Ex.1、 set area to standard sensitivity motion detection

i) press STOP to set the sensitivity level to " 2 "

ii) press "UP", "DOWN", to set the area , press "ENTER" to finish the setting

iii) Press "MENU" to exit and save the new setting

Ex.2、 cancel the sensitivity setting

i) press STOP to set the sensitivity level to " 0 "

ii) press "UP", "DOWN", to set the area , press "ENTER" to finish the setting

iii) Press "MENU" to exit and save the new setting

4.3.6 HARD MANAGEMENT

- a. Enter HARD MANAGEMENT
" MAIN MENU " → "HARD MANAGEMENT"
- b. Snapshot of HARD MANAGEMENT

```
» OVERWRITE ENABLED [YES]
HDS728080PLA380
MASTER HDD SIZE 160000MB
MASTER HDD USED 80000MB 50%
MASTER HDD FORMAT
SLAVE HDD SIZE N/A
SLAVE HDD USED N/A
SLAVE HDD FORMAT
```

- c. HARD MANAGEMENT operation instruction
Function: set the record overwrite mode of HDD、HDD status、HDD format
OVERWRITE ENABLED: YES means the new record will cover the old one , old record will be lost; NO means the record will be stopped when the HDD is full written
MASTER HDD FORMAT: Format the HDD All information will be lost
Press "MENU" to exit and save the new setting

4.3.7 MISCELLANEOUS SETUP

- a. Enter MISCELLANEOUS SETUP
" MAIN MENU " → "MISCELLANEOUS SETUP "
- b. Snapshot of MISCELLANEOUS SETUP

```
» CHANGE PASSWORD
SET TIME
HIDDEN CHANNEL [OFF]
AUDIO PORT1: CH= [1]
AUDIO PORT2: CH= [2]
AUDIO PORT1: REC [YES]
AUDIO PORT2: REC [YES]
PTZ SETUP
```

- c. MISCELLANEOUS SETUP operation instruction
CHANGE PASSWORD: change the user password
SET TIME: set system time

HIDDEN CHANNEL: display live viewing or not

AUDIO PORT1: CH= [1] select the video channel working with audio

AUDIO PORT2: CH= [2]

AUDIO PORT1: REC [YES] audio record same with video record

AUDIO PORT2: REC [YES]

PTZ CONTROL:

Snapshot of PTZ control menu:

4.3.7.0 CHANGE PASSWORD

"MAIN MENU " → "MISCELLANEOUS SETUP " → "CHANGE PASSWORD "

default password: 111111

4.3.7.1 SET TIME

" MAIN MENU " → "MISCELLANEOUS SETUP " → "SET TIME "

4.3.7.2 AUDIO Setting

i). Audio channel and audio record setting

: " MAIN MENU " → "MISCELLANEOUS SETUP " → " AUDIO PORT1/2 "

"AUDIO PORT1:CH=[1]":elect the video channel working with audio

"AUDIO PORT1:REC=[YES] ": audio record same with video record

ii). Audio output channel setting

Select the channel working with audio:

Under non-menu mode, press "UP"; under record-display mode, press "UP"

Set the audio output enabled or closed:

Under non-menu mode, press "DOWN"; under record-display mode, press "DOWN"

4.3.7.3 PTZ control setting

i).PTZ hardware connection

please refer" pic. 3_3" (P4)

ii). " PTZ SETUP"

a. PTZ SETUP

Route:" MAIN MENU " → "MISCELLANEOUS SETUP " → " PTZ SETUP"

b. Snapshot of PTZ SETUP:

PTZ SETUP	
SPEED	[9600]
DATA	[8]
PARITY	[None]

```
STOP [ 1 ]  
PROTOCOL [PELCO-P]  
CAMERA-[ 1 ] ID-[ 1 ]
```

c. PTZ SETUP operation instruction

PROTOCOL: PELCO-P/PELCO-D optioned

CAMERA-[1] ID-[1]: set the PTZ address code of each channel

SPEED、DATA、PARITY、STOP can not be changed by user

iii). "PTZ CONTROL" setting

a. PTZ CONTROL

Route : " MAIN MENU " →"MISCELLANEOUS SETUP "

b. Snapshot of PTZ CONTROL

```
PTZ CONTROL  
  » UP  
  DOWN  
  LEFT  
  RIGHT  
  ZOOM-  
  ZOOM+  
  FOCUS-  
  FOCUS+  
  IRIS-  
  IRIS+
```

c. PTZ CONTROL operation instruction

- 1). Press "UP"、"DOWN" to move the Cursor
- 2). Press "ENTER" to confirm the setting
- 3). Press "MENU" to exit and save the new setting

4.3.8 NETWORK SETUP

a. Enter NETWORK SETUP

" MAIN MENU " →"NETWORK SETUP"

b. Snapshot of NETWORK SETUP

```
» MAC ADDRESS..<FF:FF:FF:FF:FF:FF>  
IP ALLOCATION..[DHCP]  
IP ADDRESS.....<0.0.0.0>  
SUBNET MASK..<0.0.0.0>  
GATEWAY.....<0.0.0.0>  
DNS1 ADDRESS..[0.0.0.0]  
DNS2 ADDRESS..[0.0.0.0]  
HTTP PORT.....  
USER SETUP.....
```

DDNS SETUP....

c. NETWORK SETUP operation instruction

MAC ADDRESS: Can not be changed by user

IP ALLOCATION: Input the IP address of the unit.

IP ADDRESS: set subnet mask address of the unit.

SUBNET MASK: set gateway of the unit.

GATEWAY:

DNS1 ADDRESS:

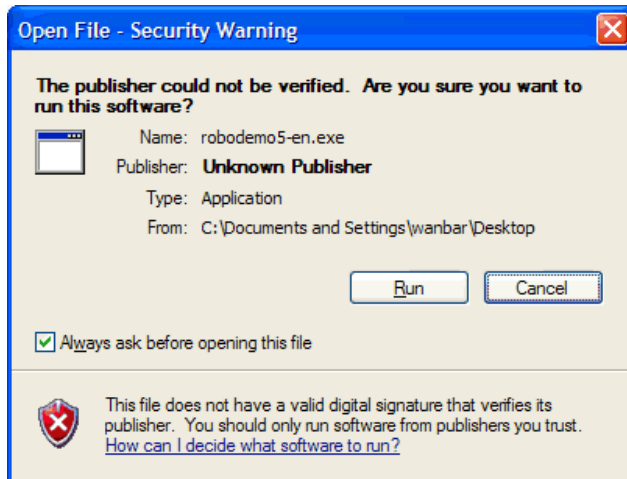
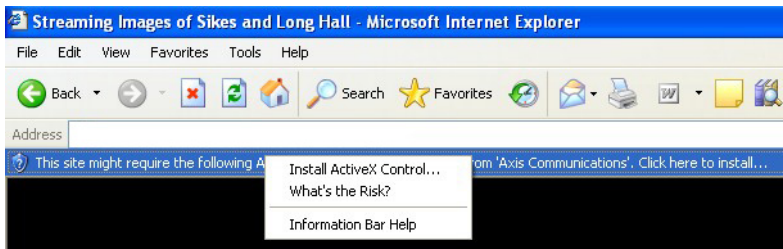
DNS2 ADDRESS:

HTTP PORT:

USER SETUP: set up of user name and password

DDNS SETUP:

d. Net live view operation instruction: Install the Active x:



4.3.9 VIDEO BACKUP

a. Enter VIDEO BACKUP

"MENU" → "VIDEO BACKUP "

b. Snapshot of VIDEO BACKUP

```
» START: 2000/00/00 00: 00: 00
   END  : 2000/00/00 00: 00: 00
   SIZE : [ ]MB
   FILENAME: [VID000.MCG]
   BACKUP TO USB DEVICE
```

VIDEO BACKUP operation

c.
instruction

Function: backup the record by USB 2.0

START: start time, END, end time; FILENAME: name of
backup documents

Press "MENU" to exit and save the new setting

d. display of the backup record

Run "Dvr4ChBkViewerV1_0.exe, "in the CD, select and display the record you have
backup in the computer

4.3.10 LOAD DEFAULT

a. Enter LOAD DEFAULT

"MENU" → "LOAD DEFAULT "

b. Snapshot of LOAD DEFAULT

```
PUSH DVR SYSTEM PASSWORD
TO LOAD DEFAULT CONFIGURATION
EXCEPT OF
NETWORK MENU AND SYSTEM
PASSWORD
```

c. LOAD DEFAULT operation instruction

Function: After input the correct password, All setting will be back to factory setting
except the Network menu and system password

4.3.11 SEARCH VIDEO

a. SEARCH VIDEO

Route : under non-menu mode, press "PLAY" → "MENU"

b. Snapshot of SEARCH VIDEO

```
SEARCH VIDEO
DISK: MASTER
07/10/24 10:50:45- 07/10/24 10:53:45
TYPE: EVENT      TIME
PLAY: EVENTS
» 00000 T 2007/10/24 10:50:45
```

c. SEARCH VIDEO operation instruction

Press "MENU" to exit

Press "UP"、"DOWN" to move the cursor to select the submenu,

Press "ENTER" to get into submenu

5、

Technical Specifications

Model No.	Standard Model	VGA Model
HDD	1 sata HDD ,Max 500 G (Not support IDE HDD)	
Video input	BNC X 4	
Alarm input	4ch (N.O. or N.C.)	
Video output	BNC	BNC ; VGA
Audio input/output	2ch /1ch	
Compression format	MPEG-4	
Resolution	NTSC: 60Frames/sec, PAL: 50 frames/sec. NTSC: 720 x 240 (HD1) PAL: 720 x288 (HD1)	
Alarm output	Relay NC or NO	

Video standard	NTSC/PAL
Record event	Max . 1600 events
USB Backup	USB 2.0
View Mode	1ch full screen 、 4ch quad display
P/T/Z	PELCO-P/PELCO-D protocol
Record mode	Manual、 Alarm、 Motion detection、 schedule
Net remote control	Remote net live view / 5 user Max.
Operation Method	keyboard、 remote controller
Work Temperature	-5℃--45℃ (RH 85%)
Power input	DC12V /3A
Measure	360mm(W)x220mm(D)x44mm(H)

*Design and specifications are subject to change without notice.