

**Slim, Compact Powerful 4 Channel DVR with Motion Detect Recording, Remote Control, Simple Mouse Control like PC, 4 Video & 4 Audio Input, USB Backup, Removable Hard Disk Caddy\*, **View Playback while still Recording**,.... 320GB HDD record up to 30days MODEL: 4C4A**



## Features:

- \* Latest, RECORD & PLAYBACK same time, never miss any Videos.
- \* Recording modes: Auto record, manual, schedule, **motion detection**
- \* Support **SATA HDD up to 500GB!!**
- \* 320GB HDD record up to 30days.
- \* 4 Video & 4 Audio Recordable.
- \* USB 2.0 – Backup Video easily.
- \* Remote Control up to 8 meters & PC Mouse up to 2 meters.
- \* Hot Swop Hard disk Caddy\*, Safe Keep Videos and View it at other places.  
Great for A ~ Z Branch CCTV, bring back HQ or Home for scanning / viewing.
- \* No Maintenance require, Auto Re-Write when Hard Disk Full.
- \* Auto Record once AC power up or AC recover, no pressing of button require!!
- \* Motion detection: area selection & sensitivity adjustment for each camera
- \* Slim & Compact, No much space take up.
- \* Very Low Power Consumption – only at 35W.

## Specification:

Compression Format-	TRUTH MPEG4 – <b>Court, Insurance Approved format</b>
Video Input / Output-	BNC 4-ch input / 1-ch output (Composite)
Display Frame Rate-	PAL: 100fps 4 x 25fps 720 x 576
Recording Frame Rate-	PAL: Max. 50fps 4x 12fps
Recording Resolution-	PAL: 640 x 224
HDD Rack- Removable,	Supports up to 500 GB HDD – Latest!!
Recording Time-	4 weeks ~ 5 weeks with 320GB HDD @ 12fps
Recording Mode-	Auto-record, Motion Detection, Manual, Schedule
Power Adapter-	DC 12V, 3A
Dimension (L x W x H)-	250mm x 232mm x 38mm
Net Weight:	2.95kg !!!!

**Password : 111 111 or just click “Login”**

## TABLE OF CONTENTS

1. INTRODUCTION .....	3
2. PHYSICAL UNIT .....	3
2.1 Front Panels .....	3
2.2 Rear Panel.....	3
2.3 Remote Control .....	4
3. GETTING STARTED .....	6
4. HARDWARE SETUP.....	7
4.1 Hard Disk Drive Installation .....	7
4.2 Monitor Connection .....	7
4.3 Camera Connection.....	8
4.4 Mouse Connection.....	8
4.5 DVR Power Connection.....	8
5. SETUP.....	9
5.1 CAMERA .....	11
5.2 RECORD .....	11
5.3 ALARM .....	12
5.4 SCREEN.....	14
5.5 AUDIO .....	15
5.6 SYSTEM.....	15
5.6.1 HARD DISK SETUP.....	16
5.6.2 ACCOUNT SETUP .....	17
5.6.3 PASSWORD SETUP .....	17
5.6.4 KEYPAD TONE .....	18
5.6.5 TIME SET.....	18
5.6.6 EVENT LIST .....	19
5.6.7 F/W UPGRADE .....	19
5.6.8 USB TEST .....	19
5.7 LANGUAGE.....	20
5.8 LOGOUT .....	20
5.9 EXIT .....	20
6. PLAYBACK WITH TIME SEARCH FUNCTION .....	21
7. BACKUP via USB memory stick .....	21

8. RECORDING LENGTH .....	24
9. PLAYBACK WITH BACK-UP VIDEO DATA ON PC.....	25
9.1 Install .....	25
9.2 Program Interface.....	25
9.3 Button Function .....	26
10. SPECIFICATION .....	29
11. APPENDIX.....	30
11.1 System Connect Sketch Map.....	30
11.2 Fitting Come Along With DVR.....	30
11.3 Model 38xx series used the compatible USB Stick. ....	31

# 1. INTRODUCTION

This system provides total video security solution for 4-channel digital surveillance system supporting duplex (simultaneous playback and record) functionality.

Either mouse or remote control unit can operate all DVR menu setting.

## 2. PHYSICAL UNIT

### 2.1 Front Panels



① IR Remote Receiver

② LED Light

(a) GREEN (PWR): The DVR unit is powered up and running.

(b) RED (HDD): System is in Recording Mode or in Playback Mode.

③ USB PORT

Use this port to backup with USB disk.

④ PS/2 MOUSE PORT

Use this port for PS/2 mouse connection. If you have USB port mouse, use USB - PS/2 adapter to connect with this port.

⑤ HDD BOX Press-button

⑥ HDD Lock

### 2.2 Rear Panel



#### ① VIDEO OUTPUT

Use this port to connect DVR to the monitor. There is one video output.

#### ② VIDEO INPUT

Use this BNC port to connect cameras to DVR system. You might need BNC adapter for each (CH1-CH4) camera connection.

#### ③ AUDIO INPUT

Use "AUDIO IN" port for microphone connection. If signal audio input is from channel 1, there will be audio output in channel 1 view and quad view. If signal audio input is from channel 2, channel 3 or channel 4, there won't be audio output until in channel 2, channel 3 or channel 4.

#### ④ AUDIO OUT

Use "AUDIO OUT" port for speaker (mono) connecting. And this port is audio output for playback.

#### ⑤ AC-DC POWER ADAPTER JACK

Connect the power adapter into DVR and plug the power cable into the wall. Some DVR models do not have a power adapter so you may not see this. In case, just plug power cable from the behind the DVR into the wall. Below is the information of input/output voltage for the power adapter.

[Input: AC 100-240V, 50/60Hz, 1.5A / Output: DC +12V == 5A]

#### ⑥ Fan

## **2.3 Remote Control**

A series of button on DVR remote unit make a system to operate its basic functions, such as recording, playback, fast-forward, reverse, etc. For more details about the DVR menu, refer

to “[5. SETUP](#)”.



\*\* The remote control feature can vary but the functionality of each button is same.

① Quad , CH1 , CH2 , CH3 , CH4

Use this button for full screen display for each camera channel or quad display on the monitor screen. If you push “Quad” camera selection button, DVR will display all 4 channels (cameras) at the same time in quad screen.

② ● REC

Press “REC” button to start manual recording. Then you will see this mark ‘●’ on the selected channel of the screen, which means that the channel is now recording.

To stop manual recording, press “REC” again during recording mode.

Also user can press “REC” button to reduce value when adjust parameters.

③ ■ STOP

To stop playback, press the “STOP” button.

④ ► PLAY

After recording, press “PLAY” button to start video playback.

Playback will start with the oldest unread video data and then continue playing.

⑤ ►► FWD

This is the fast forward button. To play the recorded stream faster, press the “FWD” button.

There are three levels of fast forward playback speed.

(a) FF 1 ( ►► ) : Play two times faster (x2) than the normal play.

(b) FF 2 ( ►►► ) : Play three times faster (x3) than the normal play.

(c) FF 3 ( ►►►► ) : Play four times faster (x4) than the normal play.

To change the fast forward play back speed level, press the “FWD” button again.

⑥ REW

This is the rewind button. To play the recorded stream backward, press the “REW” button.

**[NOTE]:** The fast forward and reverse playback speeds will vary depending on the frame rate and record quality settings, as well as the number of channels recorded.

⑦  PAUSE

To pause the video playback, press the “PAUSE” button. Then the video displaying will be stopped.

To continue playback, push the “PLAY” button.

⑧ MENU

It displays menu option or go back to the previous.

⑨ UP(▲) / DOWN(▼)

To change a menu field, use the “UP” or “DOWN” buttons.

⑩ SEL/EDIT

Use this button to change values on main menu or sub menu setting. Press this button to increase value.

## 3. GETTING STARTED

Install a hard disk drive into your DVR.

Connect DVR to monitor.

Connect cameras (up to 4) to DVR.

Connect other peripheral devices (mouse, USB Drive) if necessary.

Plug the power cord into the power jack on the wall.

Connect the power adapter into DVR to turn on the DVR.

Start TV Monitoring and Recording.

- Make sure that a hard disk drive and camera(s) are properly installed.
- The hard disk (**IDE HDD**) jumper setting must be set to “**master**” jumper setting.
- After installation of hard drive, the hard drive drawer must be locked with key.
- If the power is turned off while recording (i.e. a power failure), the DVR will enter “Power Recovery” modes at start up, detect that it has been shut down, and then

reinitiate the recording process.

## 4. HARDWARE SETUP

### 4.1 IDE Hard Disk Drive Installation

#### (A) Make sure that HDD Jumper setting as “Master”



Before installing hard drive, set jumper as “Master”.

The master jumper setting varies depending on the hard drive manufactures.

Refer to manufacture’s manual for master jumper setting.

For example, the model of HDD is Seagate.

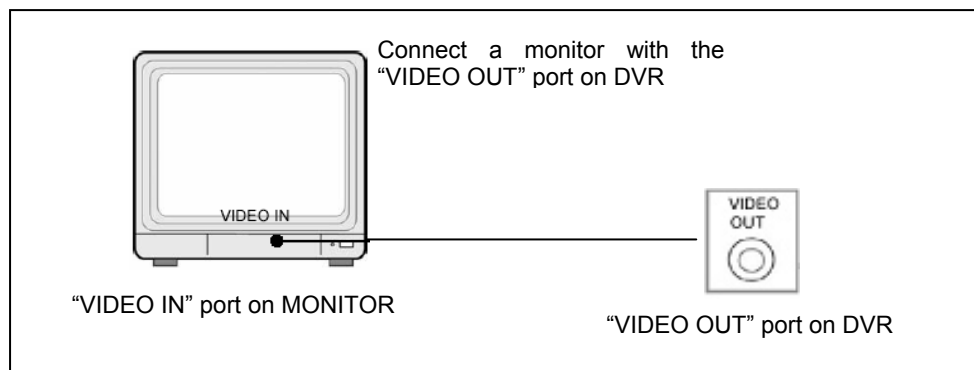
#### (B) Connect the ribbon cable (IDE) cable & power cable



Back side of hard disk drive

### 4.2 Monitor Connection

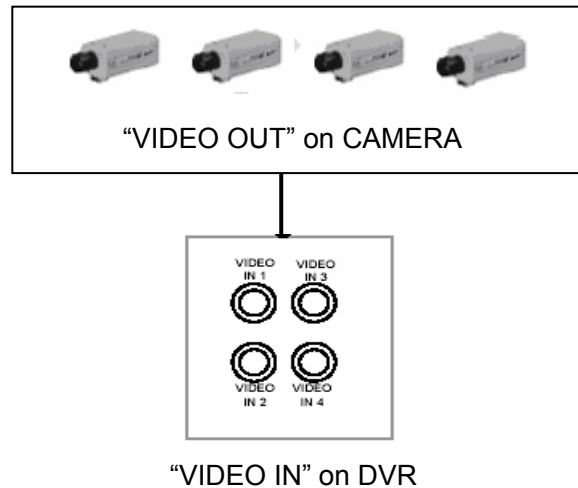
To display video image from cameras on the monitor, the DVR’s video output signal should be transferred to your TV set or monitor.



Connect "VIDEO IN" of the monitor to "VIDEO OUT" of the DVR system.

### 4.3 Camera Connection

Connect between "VIDEO IN" of your DVR and "VIDEO OUT" of camera with video cable and plug in the camera's power adapter.



### 4.4 Mouse Connection

Connect PS/2 mouse with the port below on the DVR.



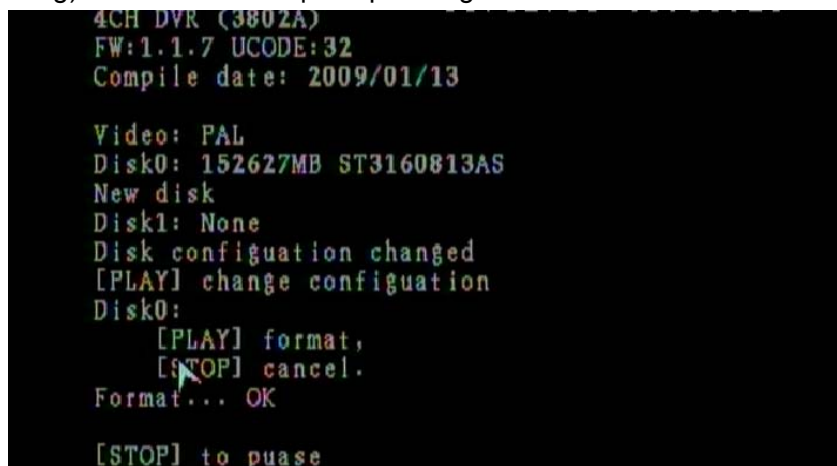
[PS/2 Mouse Port]

### 4.5 DVR Power Connection

Connect a DVR power adapter to the adapter jack at the rear panel of DVR unit.

It will boot up the system.

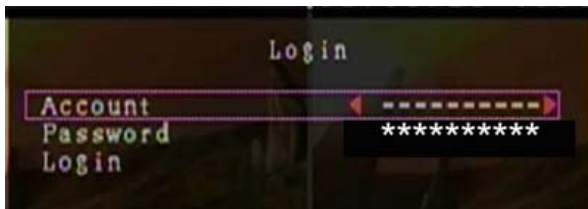
If users install a new hard disk drive, it will ask for HDD formatting before a system starts to run (Below Fig). Choose format option pressing "PLAY" button.



Below is the information of input/output voltage for the power adapter.

- ✧ Input: AC 100-240V, 50/60Hz, 1.5A
- ✧ Output: DC +12V == 5A

## 5. SETUP



After installing a new hard drive on the system, user had better to format the hard drive first. And there are three password levels in the system, including **admin**

(highest), **operator**, and **guest** (lowest). **If the user does not login the system, he can only view live video display. And when the user login the system, if he can't operate the system in thirty seconds the system will be locked automatically.**

The system allows up to four user accounts. The administrator can set up the login name, password and level for each user. (Please refer to Section [5.6.2](#) for Account Setup.)

The **admin** can operate everything, and the **operator** can operate everything except examining user accounts and modifying its password level, and the **guest** can operate live video display, and image playback.

After system boot-up, hold a right mouse click button and there will be login window. Hold a left mouse click button to click the order of "Account", and input correct account. Then left click the order of "Password" and input correct password. At last left click "Login" to enter system. There is one factory-preset login "account/password" "admin/111111" at **admin** level. The user can use it to login the system for the first time.



After login the system, hold a right mouse click button and there will be a piece of suggestive

window options on the monitor (Fig (a)). Hold a left mouse click button to click the icon “☰”. Or press the MENU button to make any changes of DVR settings. You will see the screen below on the monitor (Fig (b)).

**Suggestive window options:**

- ☐ Channel 1 view
- ☐ Channel 2 view
- ☐ Channel 3 view
- ☐ Channel 4 view
- ☐ All channel view
- Manual recording or Stop manual recording
- ▶ Play record list
- ⇌ Channel auto sequence. The icon “⇌” won't display if the order of “auto sequence” is “OFF”.

☰ Menu option

🚪 Logout.



**Fig (a)**



**Fig (b)**

**The DVR Remote Control**

Press the “UP” or “DOWN” key on the DVR remote control to move the cursor. Press “SELECT” button on the remote control in order to change the settings. In the MAIN MENU, the cursor “▶” will be shown on the screen right next to each sub menu. To go back to the previous, press “MENU” button on the remote control.

**The Mouse Control**

Move the mouse up or down to move the cursor. Hold a left mouse click button to change the settings. Click a right mouse to go back to the previous.

## 5.1 CAMERA



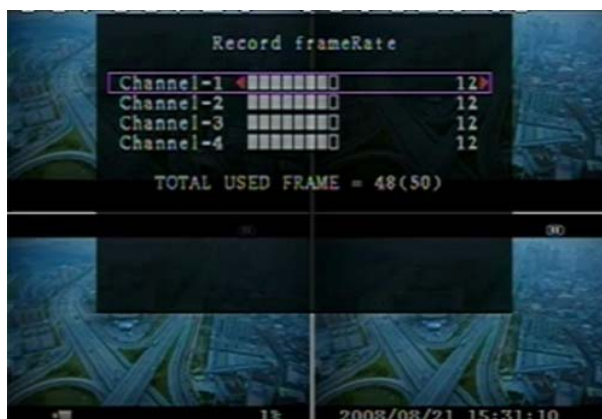
Use this option for video color adjustment for each channel (1,2,3,4). Go to DISPLAY option to enable or disable for screen display of each camera. Modify camera name of each channel that user wants to.

## 5.2 RECORD



Use this option to choose the channel (1,2,3,4) for recording. Only selected channel will be recorded no matter how many camera channels are displayed on the screen.

### A: [RECORD FRAMERATE]



Change the record frame rate for each channel. The higher the record frame rate, the more natural movement you will see while playback.

Independent each channel frame rate adjustment is possible.

Press button 【ENTER】 or hold a left mouse click button to click icon “▶” to


increase the record frame rate for each channel. Press button 【REC】 or hold a left mouse click button to click icon “◀” to decrease the record frame rate for each channel.

If you make the record frame rate off, the channel won't record.

### B: [RECORD QUALITY]

Choose record quality among Normal / Low / High. The higher the record quality is, the higher the video image quality is well you playback. Higher quality cost more hard disk space. record quality and hard disk space will affect total record time of DVR system.

### C: [RECORD SCHEDULE]

**Notice:** To start motion record, make sure the period that you intend to record is “

Press [Up] or [Down] or move the mouse to move the prompt ,and press [SEL] or hold a left mouse button to adjust video record method during each time period. Also user can adjust the same record method during the whole time periods synchronously, press [QUAD] button in the DVR remote control, or hold a left mouse button to click the time period (24:00:00).



- **Grey bar:** No record will be made for this time period if user can't activate manual recording.

- **Red bar:** The time period with a red bar will activate continuous recording mode (Time record) unless there is any manual stopping during recording during that

time.

- **Green bar:** The time period with a green bar for built-in motion recording (MD). (See also the following chapter “MOTION DETECTION”)

## 5.3 ALARM

Using SELECT button or hold a left mouse button to click icon “◀” / “▶”, adjust parameters of each option.



**A: [ALARM DURATION]**

It sets the alarm duration time (in seconds) after alarm is activated. Value at "05、 10、 15、 20、 25、 30、 CONT、 OFF"(in seconds). Default at "OFF". By changing the value in the ALARM DURATION, you can adjust how long the

alarm will last in seconds. The alarm device should be installed.

**B: [BUZZER DURATION]**

It sets the buzzer duration time (in seconds) after alarm is activated.

Value at "05、 10、 15、 20、 25、 30、 CONT、 OFF"(in seconds). Default at "OFF". When "buzzer duration" is "cont", the buzzer will work continuously.

**C: [EVENT REC DURATION]**

It sets the record time of duration (in seconds) after sensor recording or motion recording or MD & sensor recording is activated.

Value at "05、 10、 15、 20、 25、 30"(in second).

**D: [MOTION DETECTION]**



**[CHANNEL]**

Select the channel (1,2,3,4) for recording mode by internal motion.

**[SENSITIVITY]**

It adjusts the sensitivity of the built-in motion sensor on the DVR system while recording. The higher the number, the

higher the sensitivity is. Value at "1、 2、 3、 4、 Off". The maximum sensitivity level is 4.

**[MOTION AREA]**

Use this option to select the range of motion detection area.

Use the keypad button, remote control button, or mouse click to assign the area.

The keypad and mouse control instructions are below.

**[Using remote control button]**

Press [SEL] once to pitch on the area, press [SEL] twice to cancel the area.

QUAD: Select or deselect the motion detection area for motion detection recording.

CH1 - Up / CH2 - Down / CH3 - Left / CH4 - Right

**[Using Mouse button]**

While holding a left mouse click button, move the mouse to select, deselect, or reselect the motion detection area for recording.

By the way, the area only can be selected from up to down and from left to right. When the block is covered by blue shadow, it's active to record. When the block is transparent, it can't be recorded.

**After completed the motion area setting, press "MENU" button or hold a right mouse click button to exit.**

**To start Motion Record, user must complete the "Motion area" setup.**

**5.4 SCREEN**



**[BORDER]**

User can make the white borderline around each channel to appear or disappear by using this option to be "on" or "off".

**[AUTO SEQUENCE]**

This is for auto screen switch rotation. Value at "Off、1~10(in seconds)". Default at

"Off".

**[VIDEO ADJUSTMENT]**


You can move the entire video screen up, down, left, and right using this option.


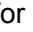
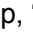

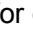
Keypad assignment in the remote control is below.

—CH1 for up, CH2 for down, CH3 for left, CH4 for right.

Mouse function.

Hold a right mouse click button, there will be some icons on the screen as follows

“”. Hold a left mouse click button to click each icon to select.

—“”for up, “” for down, “” for left, “” for right, “” for ESC.

## 5.5 AUDIO



Make the record “ON” to enable sound recording when a microphone device is attached in AUDIO INPUT port on the system.

Adjust input and output volume for speaker and the intensity level of sound recording.

To make the sound enabled for speaker,

leave the mute “OFF”.

## 5.6 SYSTEM



Fig (c)



Fig (d)

In this menu, you can see the information of the hard disk drive installed on the system, change the system password, adjust keypad tone, browser event list or adjust current time on the system.

If user login the system at **admin** level, the menu bar will be displayed as **Fig (c)**. The user can enter into the order of “**Account**” to examine all user accounts, add or delete user that

he wants to (Please refer to section [5.6.2](#) for account setup).

If user login the system at Operator or Guest level, the menu bar will be displayed as **Fig (d)**.

The user can only modify its own password. (Please refer to [5.6.3](#) for password setup)

### 5.6.1 HARD DISK SETUP



#### [OVERWRITE ENABLED]

If you choose YES, recording continues and overwrites previous recording when hard disk drive space is full. If you choose NO, the recording stops when the hard disk drive space is full.

#### [FORMAT HDD]

If you format the hard disk drive, all the video data stored on the hard disk drive will be deleted. Remind that the system has no restore option once the hard drive is formatted.

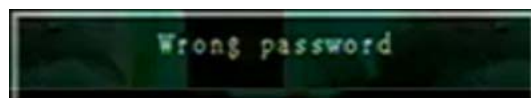
When you choose this option, it will ask for password before formatting. The default password is "111111". Type the password and press any key button.



When HDD is successfully formatted, you will see the message below blinking.



If the password is incorrect, you will see the below message blinking. Then try to type right password again.



### 5.6.2 ACCOUNT SETUP



Only user log in the system at admin level, the Account Setup allows the administrator to add new users, delete existing ones, and modify the user's name/password/and level. The system allows up to 4 user accounts.

[\[Account\]/\[Password\]](#)



In setup Menu display, move the cursor to change the highlighted option to Account, and then press ENTER to call up Account/Password as shown. All numbers, letters and sign in the pane can be used as user account or password.



Press [SEL] to input value, and move the prompt to the option of "ENTER", press [SEL] to confirm.

— CH1 for up, CH2 for down, CH3 for left, CH4 for right, Press "Shift" for change characters.

[\[Level\]](#)

Move the cursor to change the highlighted option to Level, and then press [SEL] to adjust user level (**operator/guest**).

### 5.6.3 PASSWORD SETUP

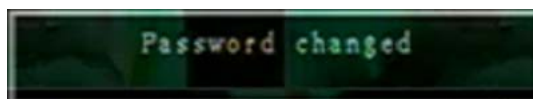
When user log in the system at **operator** or **guest**. He can change password at his level. All numbers, letters and sign in the pane can be used as password. Press [SEL] to input value, and move the prompt to the option of "ENTER", press [SEL] to input current password.



— CH1 for up, CH2 for down, CH3 for left, CH4 for right, Press “Shift” for change characters.

And the same operation measure to input new password and confirm password.

When password change succeed, user will see the below message blowing.



When password change fail, user will see the below message blowing.



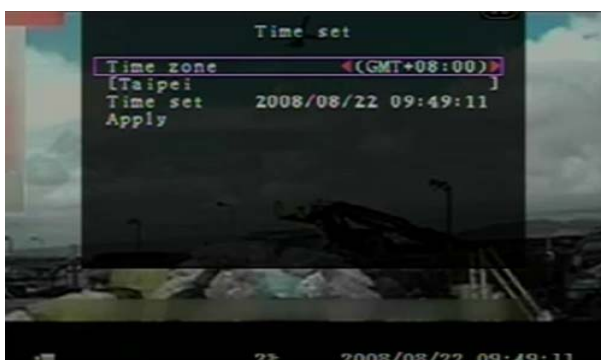
#### 5.6.4 KEYPAD TONE

Make the keypad tone “ON” or “OFF” to enable or disable keypad tone during operating.

#### 5.6.5 TIME SET

You can adjust the current time, date and year at any time by region. Set your region first and set the current time so that the video back-up data can be played without time shifting later on.

Date and Time format are below.



\*\*\* 2008/08/08 — year/month/day

\*\*\* 01:01:00 — hour: minute: second

To move the cursor on the screen, use “UP” and “DOWN” key on the DVR remote control and then press “SELECT” button to change the numeric value.

Once you finish time setting, press “MENU” button. Then press “DOWN” key and “SELECT” button to apply the new time set. Or move the mouse to move the cursor up and down, hold a left mouse click button to change the numeric value. Once you finish time setting, hold a right mouse click button to return. Then move the mouse to the order of “Apply” to left click

to apply the new time set.

### 5.6.6 EVENT LIST



EVENT LIST function enables playback by event. On the Event List menu, it shows all past recorded video, start time and end time of each recorded video, and etc showing recording year/date/time in list. The HDD can be stored 300 pieces of event

in it at most. If the events are over 300 pieces, user can play previous event according to input time period if the data hasn't been over-written.

To playback by EVEN LIST, using [UP]/[DOWN] or channel number (CH1 for Page Up or CH2 for Page Down) key on the remote control, select the event that you want to playback and press "PLAY" button. Another way move the mouse up and down or click the left mouse button ("◀" for Page Up or "▶" for Page Down), select the event that you want to playback and double click the left mouse button. Then it will playback the recording video data.

### 5.6.7 F/W UPGRADE

This menu is for firmware upgrade of DVR system through USB host (USB memory stick) connection, you can simply upgrade the system once you connect the USB memory stick that contains a firmware file.

- [CAUTION]:**
1. Do not turn off the system while the system is upgrading. Otherwise, it will cause the breakdown of the system that needs a special recovery process.
  2. If you don't install a HDD in the DVR, the system can't be upgrade.
  3. Before the system is upgrade, you must stop recording.

### 5.6.8 USB TEST

This option is testing purpose only. Users can check the compatibility of the USB memory stick for backup.



## 5.7 LANGUAGE

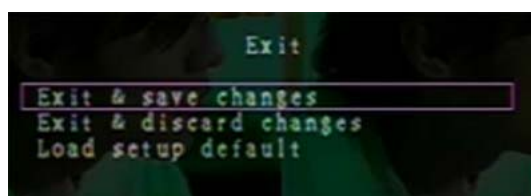
Our system supports multi-language OSD. You can choose either Chinese or English for display menu on the screen. You can change it by pushing “SELECT” button on the remote control, and also can hold the left mouse button to click icon “◀” “▶” on “LANGUAGE”.

## 5.8 LOGOUT

User can use this option to log out the system.

## 5.9 EXIT

After you change setting on DVR menu, you need to confirm the changes under EXIT menu.



### **[EXIT & SAVE CHANGE]**

Save change and go back to main screen.

### **[EXIT & DISCARD CHANGES]**

No change and go back to main screen.

### **[LOAD SETUP DEFAULT]**

Load default setting.

## 6. PLAYBACK WITH TIME SEARCH FUNCTION



This is an enhanced playback option, which enables the user manually to adjust a specific starting time for playback.

### [Keypad Control]:

In order to playback with time search function, press "PLAY" button on remote control first. And then press "SELECT" key to change the value of the playback start date & time and press "PLAY" button again. The playback will start from the date & time indicated by the user.

### [Mouse Control]:

Hold a right mouse click button and left click the icon "▶". And then press the left mouse button to change the value of the playback start date & time and press the right mouse button. Then hold a left mouse button to click "Search", the playback will start from the date & time indicated by the user.

## 7. BACKUP via USB memory stick

Our 4-channel DVR system has an enhanced back-up features so that it's possible to transfer the video data image recorded on the hard drive to USB memory stick.

Before you back up a stream of video data, have the USB memory stick to be ready and attaché them into DVR system.

In order to save the video data with these back-up devices, you should first start with playback. And then press "MENU" button. Use "UP" key or "DOWN" key move the prompt, then press "SELECT" button to set start time and the end time of the recorded video data,

which will be saved on back-up devices. If you want to setup the end time faster, you can press the button [▶▶FWD] to change the play speed that you want, and then press [DOWN] to select end time again. After setting the time of backup, you should press [play] to recover the normal speed.

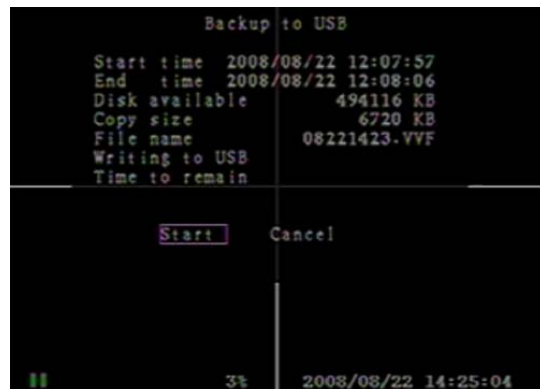
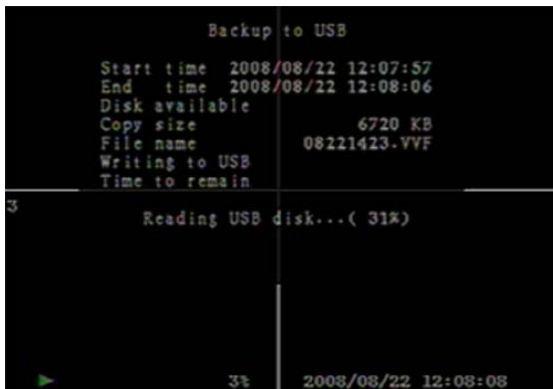
Move the prompt to the option “USB copy”, then press “SELECT” button to backup the video data on USB stick

After playback, press “MENU” button. Then using “UP” and “DOWN” key set the time period of recorded video data that you want to save on the back-up devices.



USB copy:

Move the prompt to “USB copy”, and press “SELECT” button or hold a left mouse click button to back up a stream of video data on USB memory stick.

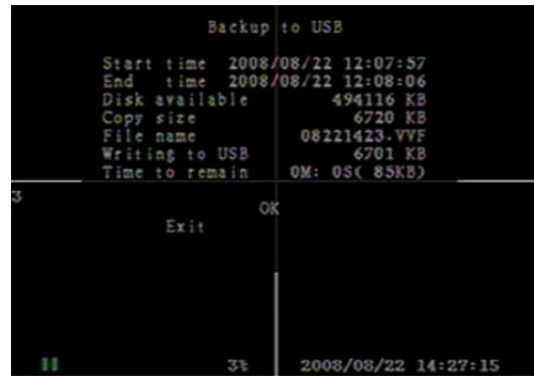


It will take a few minutes to write the video data on USB memory stick. The file size number is going up until it's done with the message below.

WRITING...

Then it will show the following message on the screen.

FIXATING...



Take out the USB memory stick and attach it into your PC when it's done.

Press "PLAY" button to continue with a system.

To view the video image saved on back-up devices on the computer, you need our software provided with this package.

## 8. RECORDING LENGTH

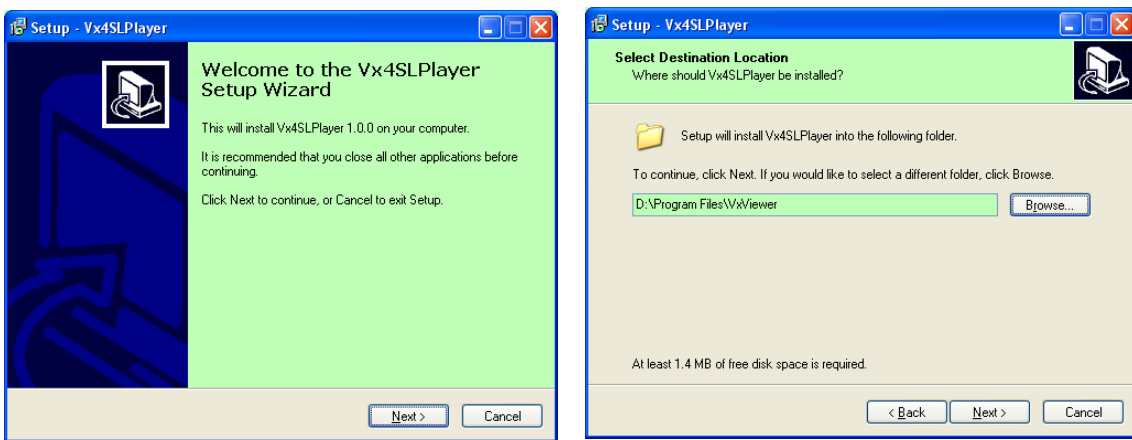
Video System is "PAL". Estimate record time basing on 320G Byte HDD.

Record Speed	REC Quality	DATA RATE (GB/Hour)	Record Time (Hour)
50F/Sec	HIGH	4.4	73
	NORMAL	2.8	114
	LOW	2.3	139
25F/Sec	HIGH	2.4	133
	NORMAL	1.6	200
	LOW	1.3	246


# 9. PLAYBACK WITH BACK-UP VIDEO DATA ON PC

## 9.1 Install

1. Put the Driver Program CD in your CD-ROM.
2. Go for installing by setup.
3. Set up the install directory.
4. Execute: Start >Program> Vx4SLPlayer.



## 9.2 Program Interface

Double click icon “  ” on desktop to run the program.

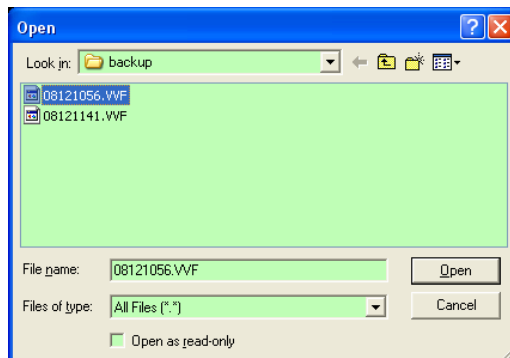


## 9.3 Button Function




- |                         |                        |
|-------------------------|------------------------|
| 1. Open File            | 2. Fast Backward       |
| 3. Play Reverse         | 4. Previous Frame      |
| 5. Pause                | 6. Next Frame          |
| 7. Play                 | 8. Fast forward        |
| 9. Still Capture        | 10. Split 1            |
| 11. Split 4             | 12. Volume Scroll Bar  |
| 13. Mute On/Off         | 14. Playing Scroll Bar |
| 15. Minimize the window | 16. Close the window   |

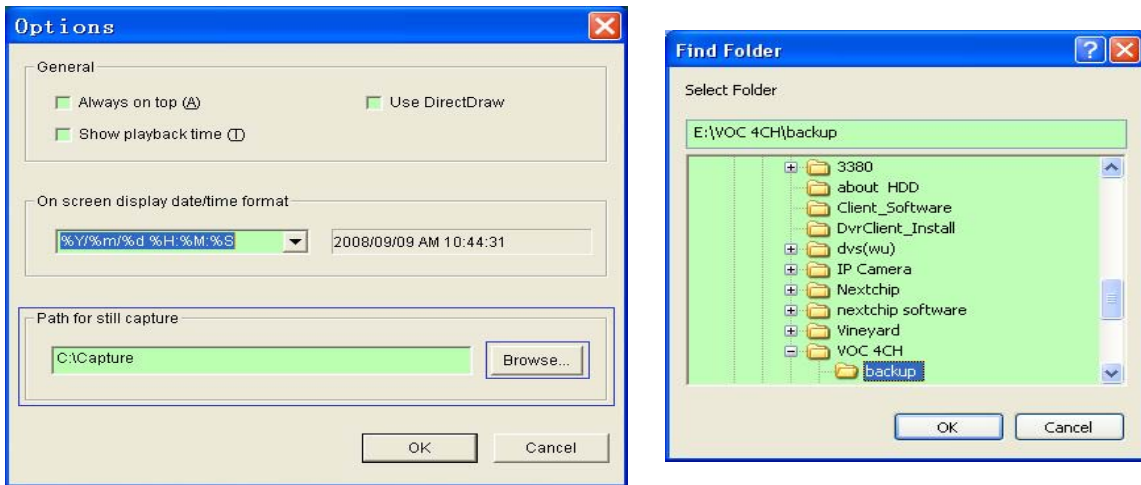
1) Click “” to play the video recorder in “\*.VVF” format.



2) Still Capture

Click “” to still capture. Click the right mouse button to select “Options...” to setup path for

still capture. Click the left mouse button to select folder that you want to, for example select the folder as “E:\VOC 4CH\backup”.



**3) In “Options” window, you can setup other menu selection such as “General & On screen display date/time format”.**

- Always on top (A): The client window will always display on top of all the windows.
- Use DirectDraw: Show a piece of run dialog to you graphic card.
- Show playback time (T): The playback time will display on screen during play backing.

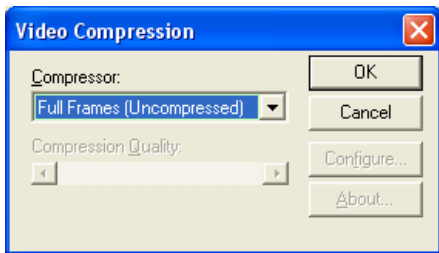
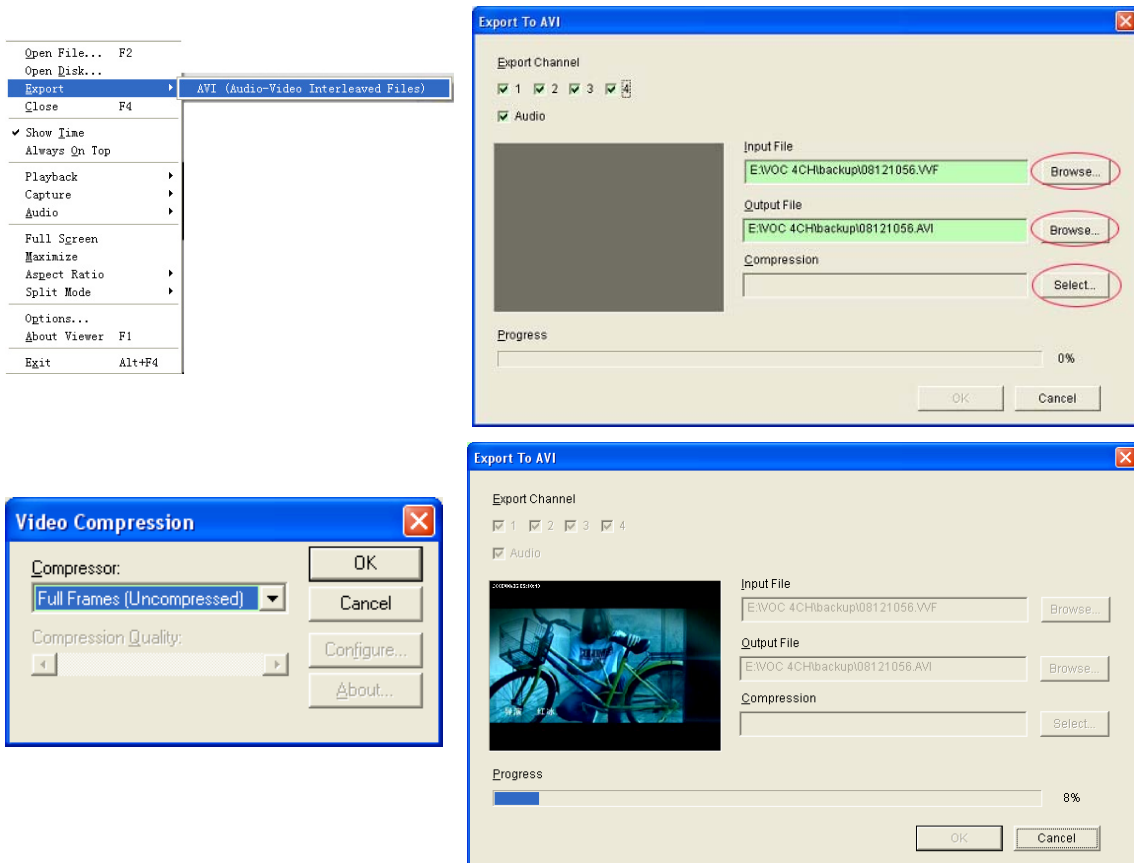
On the menu selection “On screen display date/time format”, you can adjust the date/time format displayed on screen that you want to.

**4) Press the keyboard “F1” or click the right mouse button to select option “About Viewer F1”, you can see the version of current client.**



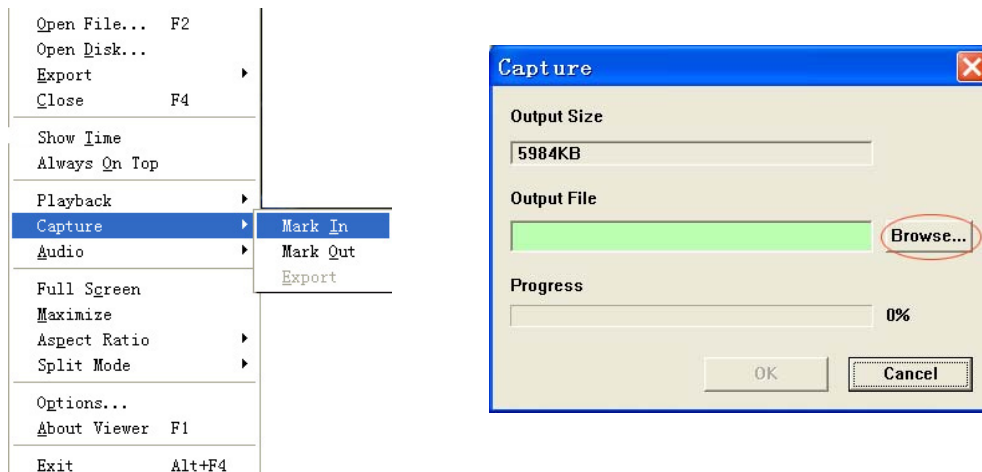
**5) Translate “VVF File Format (\*.VVF)” into “AVI File Format (\*.AVI)”**

According to the below figures, first click the right mouse button to select the option “Export”, and then click the left mouse button you will see the window “Export To AVI”. Secondly select channels you want to export, you can choose the audio to export whether or not. Thirdly click “Browse...” to select input file and output file, and click “Select...” to select video compression mode. Finally click “OK” to start, and progress will be showed at percentage.



### 6) Capture

If you want to save moiety of VVF file format (\*.VVF) on your computer rapidly, you must make sure the playback view be in pause state. Drag playing scroll bar to select start time, click the right mouse button to select the option “Capture”, then left click “Mark In”. Drag playing scroll bar ahead to select end time, click the right mouse button to select the option “Capture”, then left click “Mark Out”. Last left click “Export” and there will be a window “Capture” on screen. The “Output Size” is the size of output file. Left click “ Browse...” to setup save path. Then left click “ OK ”.



## 10. SPECIFICATION









ITEM		DESCRIPTION	NOTE
Video Format		NTSC / PAL	
Operation System		None	STAND-ALONE
Camera Input Channel		4 channel Composite BNC	
Video Output Channel		1 channel Composite BNC	
Recording Frame Rate	NTSC	Max 60 fps (Total)	Max. 30 frames/s (Each Channel)
	PAL	Max.50 fps (Total)	Max. 25 frames/s (Each Channel)
Record Mode		Time schedule, Motion detection, Manual record	
Resolution	Display	NTSC : 640 x 448 PAL : 640 x 544	
	Recording	NTSC : 640×224 (Half D1) PAL : 640×272 (Half D1)	
Compression Method		Enhanced MJPEG (12-20K Bytes/frame)	Video Quality: Low@12K Bytes; Normal@ 15K Bytes; High@20K Bytes
HDD Support		Over 500G Byte	SATA or IDE ATA –100 Interface HDD × 1
Search	Method	Time、Event	
	Full Screen	YES	
Alarm		Motion Detection and Video Signal Loss Alarm	
Audio Input		4 Channel Composite RCA	
Audio Output		1 Channel Composite RCA	
USB		USB1.1	For media Backup
OSD		Support multi-language	
PS/2 Mouse		Yes	
38KHZ Remote Control Unit		Optional	
Power Input		100-240VAC/DC 12V , 3A (Adapter supplying)	
Dimension		Length 250mm * Width 218mm * Height 42mm	

# 11. APPENDIX

## 11.1 System Connect Sketch Map



## 11.2 Fitting Come Along With DVR

1. Power Adapter	1pcs	
2. Power Cord	1pcs	
3. Remote Control (Optional)	1pcs	
4. User's Manual	1pcs	
5. USB Drive CD	1pcs	
6. Mouse	1pcs	
7. Batteries Of Remote Control	1pcs	
8. Key Of HDD Box and Bolts	1pcs	

### **11.3 Model 38xx series used the compatible USB Stick.**

In case the noise occurs on USB line due to a variety of reasons such as power noise, it might cause the error while data transferring process. In this case, it require re-transfer the date on memory stick. If the device can process things normally for this kind of exceptional case, things are okay. However, for some case, it doesn't operate normally.

For example, in case of PC, it might not cause any problem under this kind of situation because it is immune to process this kind of exceptional cases. However, in case of our products, they work only with the limited resources, which ends up with restore-impossible situation.

#### WORKING DEVICE LIST

<b>MAKER</b>	<b>MODEL</b>	<b>SIZE</b>
LG	XTICK (902RLXSN34234)	1GB
LG	XTICK (902RLXSN34234)	2GB
SONY	MICROVAULT (SOK-USM1GJ)	1GB
SAMSUNG	SUM-LCB1	1GB
TRANSCEND	JF V30	2GB
APACER	Weblink (SYE5003358)	2GB
SANDISK	CRUZER micro	4GB
FLEX	FD-02	1GB
KINGSTON	Data Traveler	2GB
KINGSTON	Data Traveler	1GB
LEMON	LEMON USB Drive	1GB