

Technology - Surveillance Systems

# iSentinel Plus

## EVR-4116-04

### Enhanced Video Recorders



iSentinel Plus comes with more user friendly features, higher quality video images, bigger storage and more secured data management and protection. With SMS event updates, faster network streaming for remote access and apps for mobile phones and ipads, you can view your premises whenever you want, wherever you are.

#### Hassle- free HDD Replacement



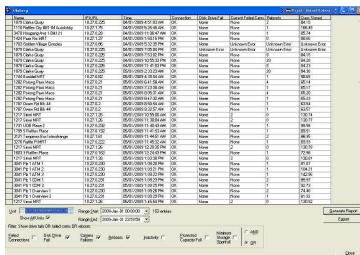
No cables or screws to remove. The front panel of the unit can be unlocked and flipped open for easy HDD replacement.

#### SMS Event Updates



Pre-specified event alerts can be sent to a maximum of 5 pre-programmed mobile numbers. Event alerts include tamper detection, video loss, motion detection and exceptions. The SMS will include the DVR's ID, IP address, channel name, event time.

#### Instant Health Check



The instant health check feature allows you to generate the health report of the equipment with just one click. The Health Check Report includes the latest status updates for connectivity, HDD, cameras, as well as number of system reboots and number of recorded days.

**iSentinel Plus – EVR-4116-04**

<b>Model</b>	<b>Model name</b>	EVR-4116-04
<b>Audio/Video Input</b>	<b>Video compression</b>	H.264
	<b>Video input</b>	16 Channels, BNC (1.0Vp-p, 75Ω)
	<b>Audio compression</b>	OggVorbis
	<b>Audio input</b>	4 Channels, RCA (2Vp-p, 1KΩ)
	<b>Voice talk interface</b>	1 Channel, using audio input channel
<b>Audio/Video Output</b>	<b>HDMI output (with HDMI audio output)</b>	1-channel resolution: 1080P: 1920 x 1080 / 60Hz; UXGA: 1600 x 1200 / 60Hz; SXGA : 1280 x 1024 / 60Hz; 720P : 1280 x 720 / 60Hz; XGA: 1024 x 768 / 60Hz
	<b>VGA interface</b>	1-channel resolution: 1080P: 1920 x 1080 / 60Hz; UXGA: 1600 x 1200 / 60Hz; SXGA : 1280 x 1024 / 60Hz; 720P : 1280 x 720 / 60Hz; XGA: 1024 x 768 / 60Hz
	<b>CVBS output</b>	2-channels (1 Main Video Out + 1 Spot Video Out), BNC (1.0Vp-p, 75Ω) Resolution, PAL : 704 x 576, NTSC: 704 x 480
	<b>Synchronous Playback</b>	16 Channels
	<b>Frame rate (Per Channel)</b>	4CIF: 12FPS 2CIF / CIF / QCIF : 25FPS / 30(N)FPS Or 4 channels : 4CIF / 2CIF / CIF / QCIF : 25FPS / 30(N)FPS 12 channels : CIF / QCIF : : 25FPS / 30(N)FPS
	<b>Video Bit Rate</b>	Default 32Kbps –1024Kbps or user defined, Max 3072 Kbps
	<b>Audio output</b>	2 Channel, RCA (liner 600Ω)
	<b>Audio output bit rate</b>	64Kbps
	<b>Playback Resolution</b>	4CIF / 2CIF / CIF / QCIF
	<b>Synchronous Playback</b>	16 channel
<b>SATA Interface</b>	<b>HDD interface</b>	4 SATA HDD or 2 SATA HDD + 1DVD-RW
	<b>HDD capacity</b>	Up to 2TB per HDD
	<b>eSATA</b>	1 eSATA interface
	<b>Network Interface</b>	1 RJ45 10M / 100M adaptive Ethernet
<b>External Interface</b>	<b>Serial Interface</b>	1 RJ-232 (for parameter configuration, device maintenance, transparent channel) 1 RS-485 (for PTZ control) 1 RS-485 (for special keyboard control)
	<b>USB interface</b>	3 x USB 2.0
	<b>Alarm inputs</b>	16 Inputs
	<b>Alarm output</b>	4 Outputs
<b>Others</b>	<b>Power Supply</b>	100 ~ 240VAC, 6.3A, 50 ~ 60Hz
	<b>Power consumption</b>	≤50W (without HDD or DVD-RW)
	<b>Working temperature</b>	-10°C to 55°C
	<b>Working humidity</b>	10% to 90%
	<b>Size</b>	70 x 440 x 390 mm
	<b>Weight</b>	≤8Kg (without HDD or DVD-RW)

(Certis, may at any time and without notice, make changes or improvements to the products and/or cease producing or commercializing them.) The Certis logo and trademark are the property of Certis Technology International Pte. Ltd.

Authorised Dealer /Representative