

SVR Series

H.264 Digital Video Recorder

BackupViewer User's Manual

Preliminary Release

INDEX

Chapter 1. Installation

System Requirements _____	3
Installation _____	3

Chapter 2. Operation

Run BackupViewer _____	5
BackupViewer screen _____	6
Open Backup file _____	7
Playback control _____	8
Screen layout control _____	9
Screen capture _____	9
AVI backup _____	9

Chapter 1. Installation

System Requirements

CPU : Intel Pentium4, 2.0GHz or Higher

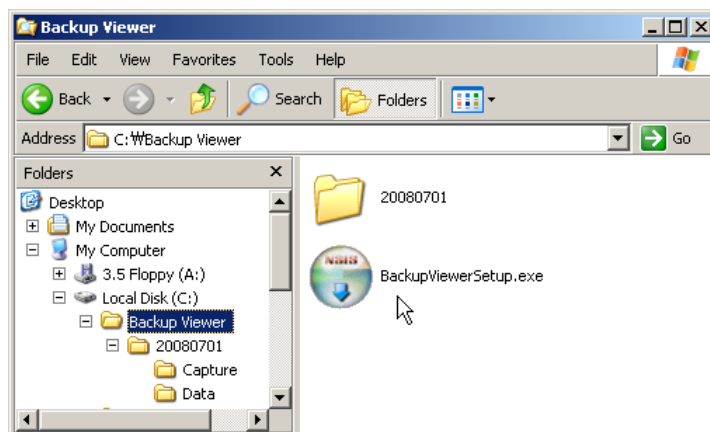
RAM : 256MB or higher

VGA : 1024x768, 24bit or 32bit color

Installation

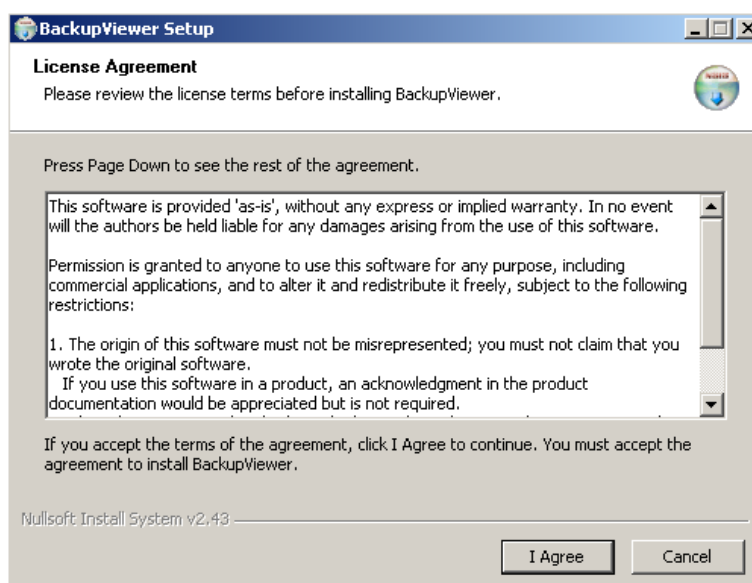
Step 1. Execute setup program

Open the folder where setup file is located and double click the setup file to start.



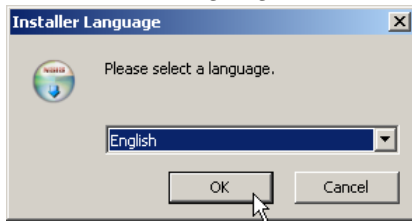
Step 2. License Agreement

Click "I Agree" button to proceed next step.



Step 3. Select language

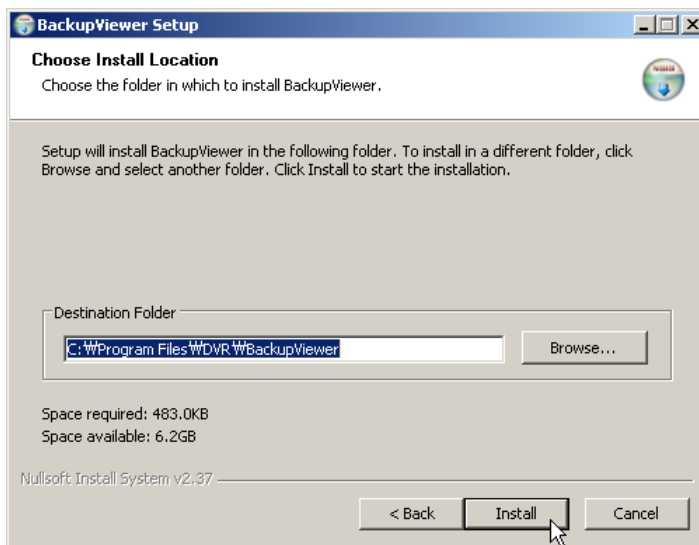
Choose the language for installation and click “OK” to proceed next step.



Step 4. Choose destination & Start to install

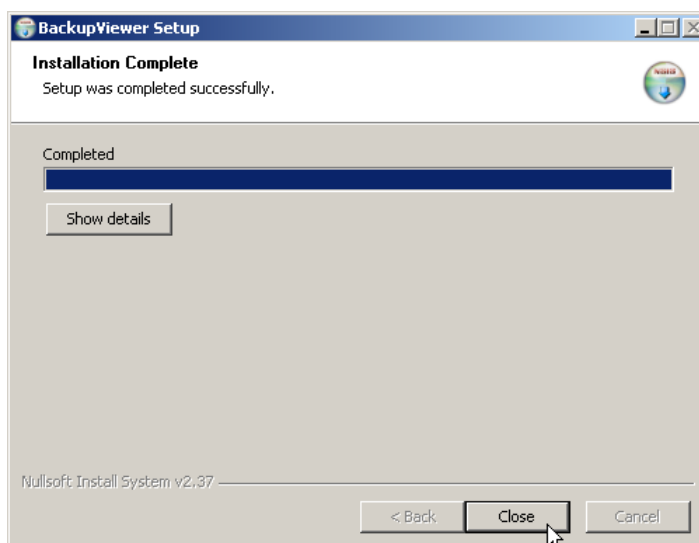
Choose destination folder you want to install and click “Install” button.

Installation will be started as soon as you click “Install” button.



Step 5. Finish

Click “Close” button to finish the installation.



Chapter 2. Operation

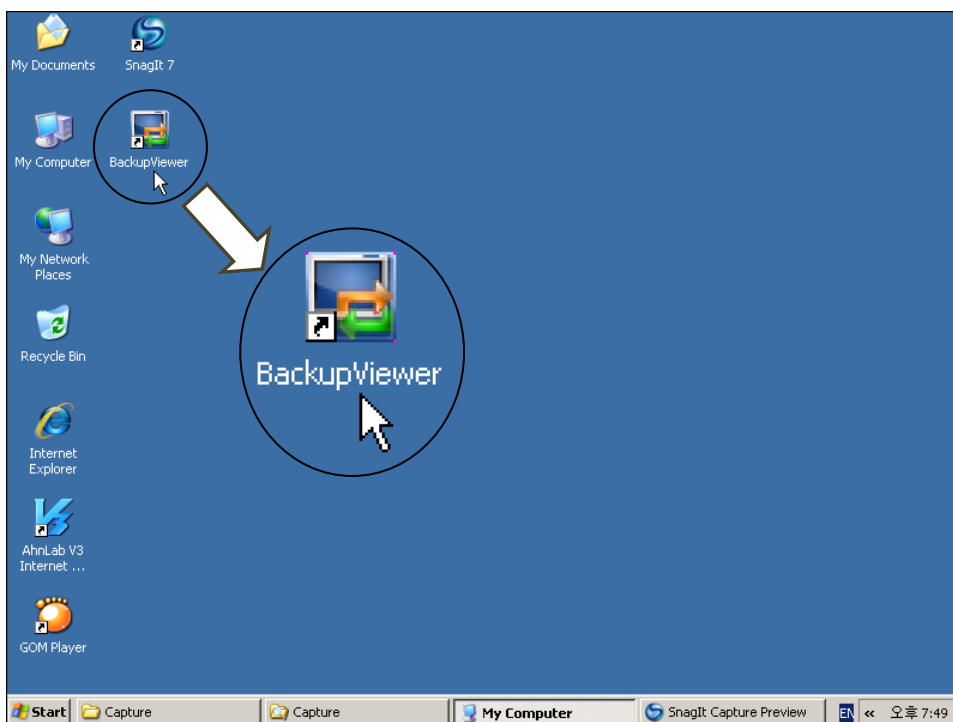
Run BackupViewer

There are two ways to run BackupViewer, choose any way you proper.

1st way : BackupViewer icon on desktop

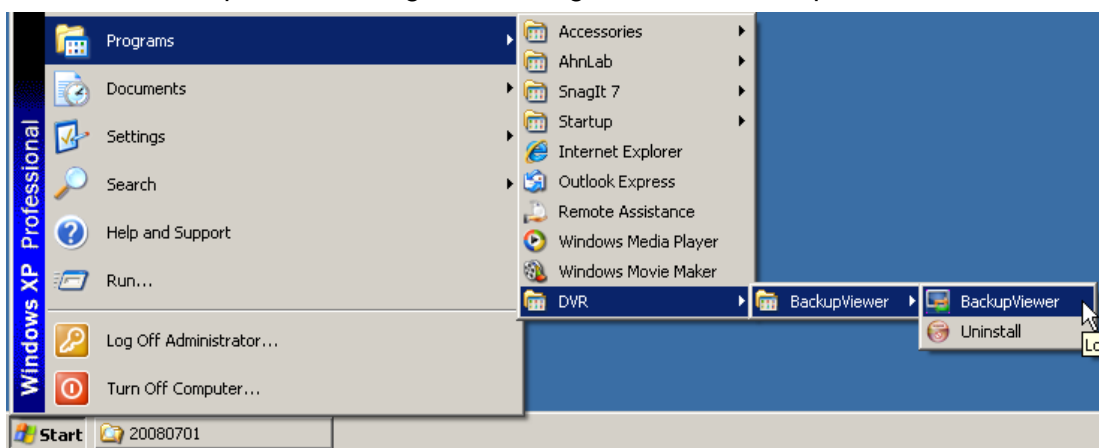
You can find an icon of BackupViewer on your Windows® desktop screen.

Double-click this icon to start Backup Viewer.

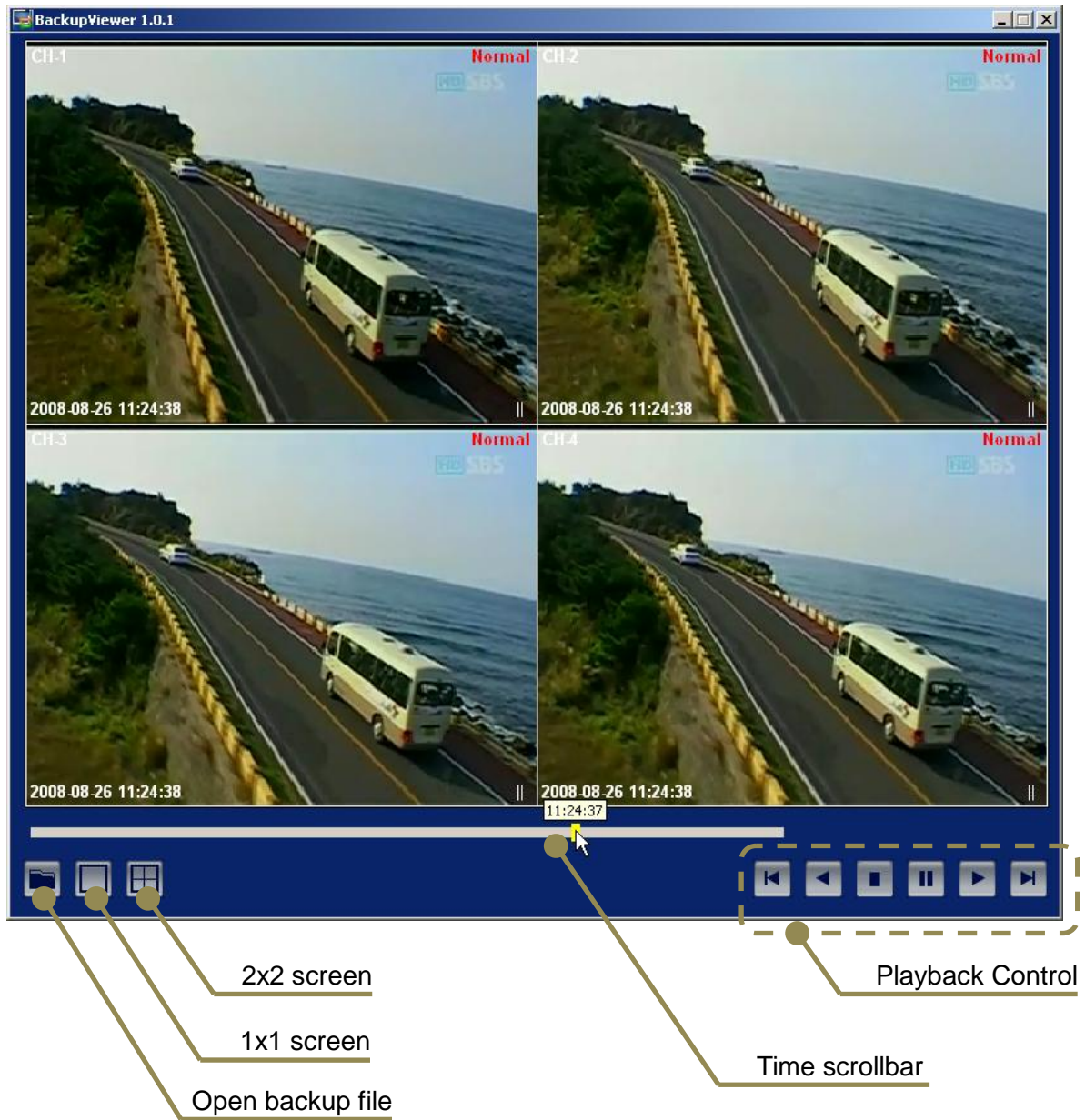


2nd way : BackupViewer on Start menu

You can find BackupViewer through Start>Program>DVR>BackupViewer menu.



BackupViewer screen



Open a backup file

1st way : using “Open” icon

Click “Open” icon on left-bottom side of the screen.

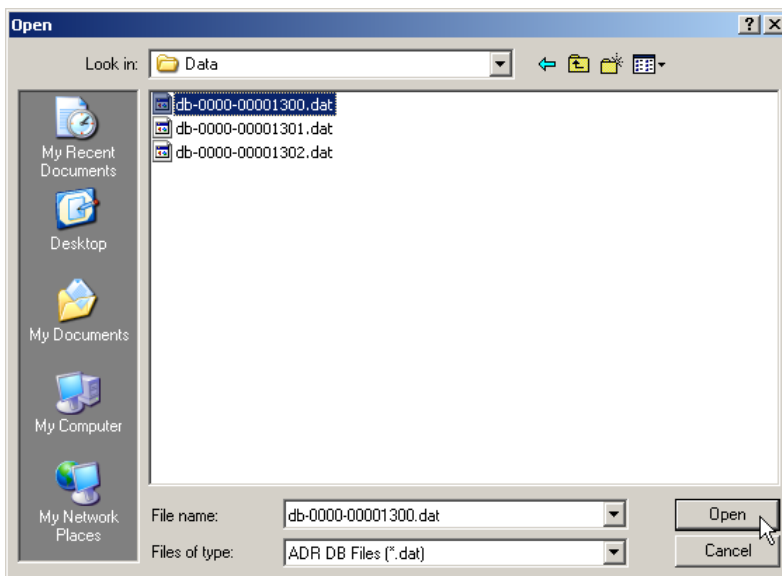


2nd way : Using menu panel

Click Right mouse button to open a menu panel.



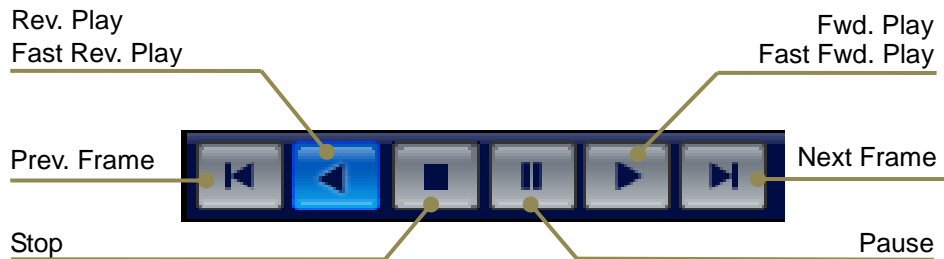
File open windows will be shown.



Choose a backup file, and click “Open” button.

Playback control

Playback control buttons



Playback position display and control

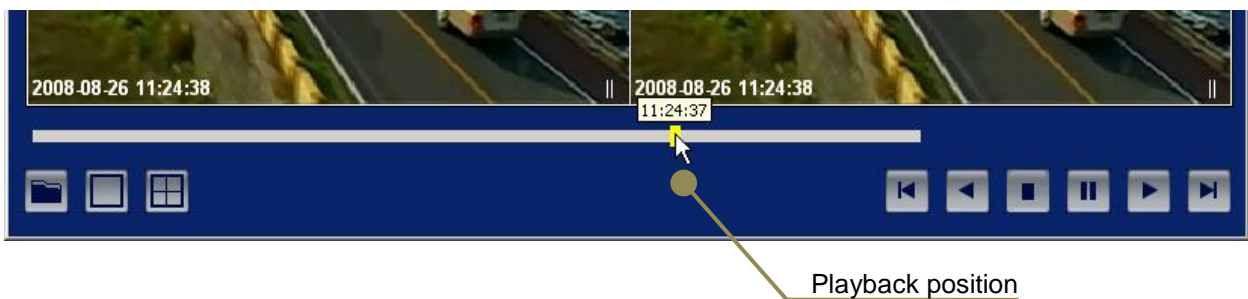
This scroll bar is indicating current playback position in the backup file.

And, you can jump into specific position to playback by drag the scroll bar.

Step 1) Move mouse pointer on the scroll bar (yellow rectangle).

Step 2) Press left mouse button, and move mouse where you want to playback position.
Playback time will be appears above the scroll bar.

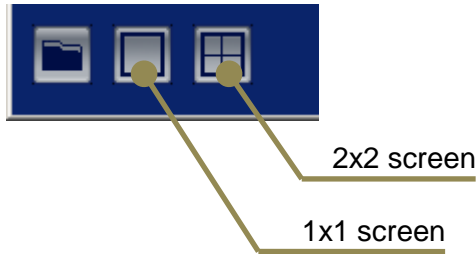
Step 3) Release left mouse button, then playback will be started.



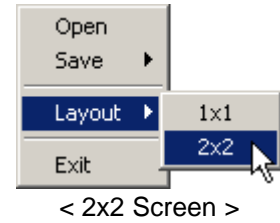
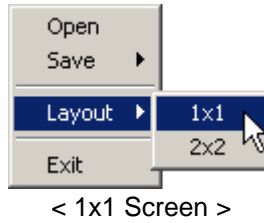
Screen layout control

You can change the screen layout using GUI or menu panel.

Using GUI

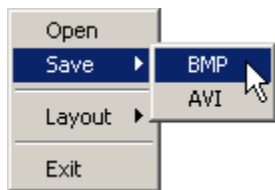


Using menu panel

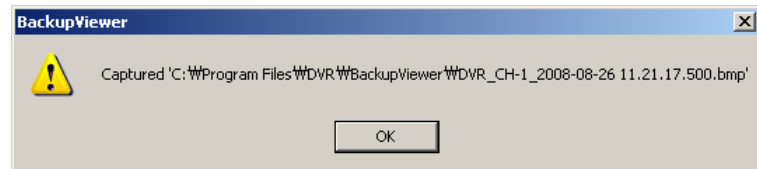


Screen capture

Click Right mouse button to open a menu pane at 1x1 screen mode, and choose “BMP” menu to capture. A still image is captured in BMP format on BackupViewer folder.



Capture message will be shown.



AVI backup

Click Right mouse button to open a menu pane at 1x1 screen mode, and choose “AVI” menu to start or stop AVI backup. A video clip will be created in AVI format on BackupViewer folder.

